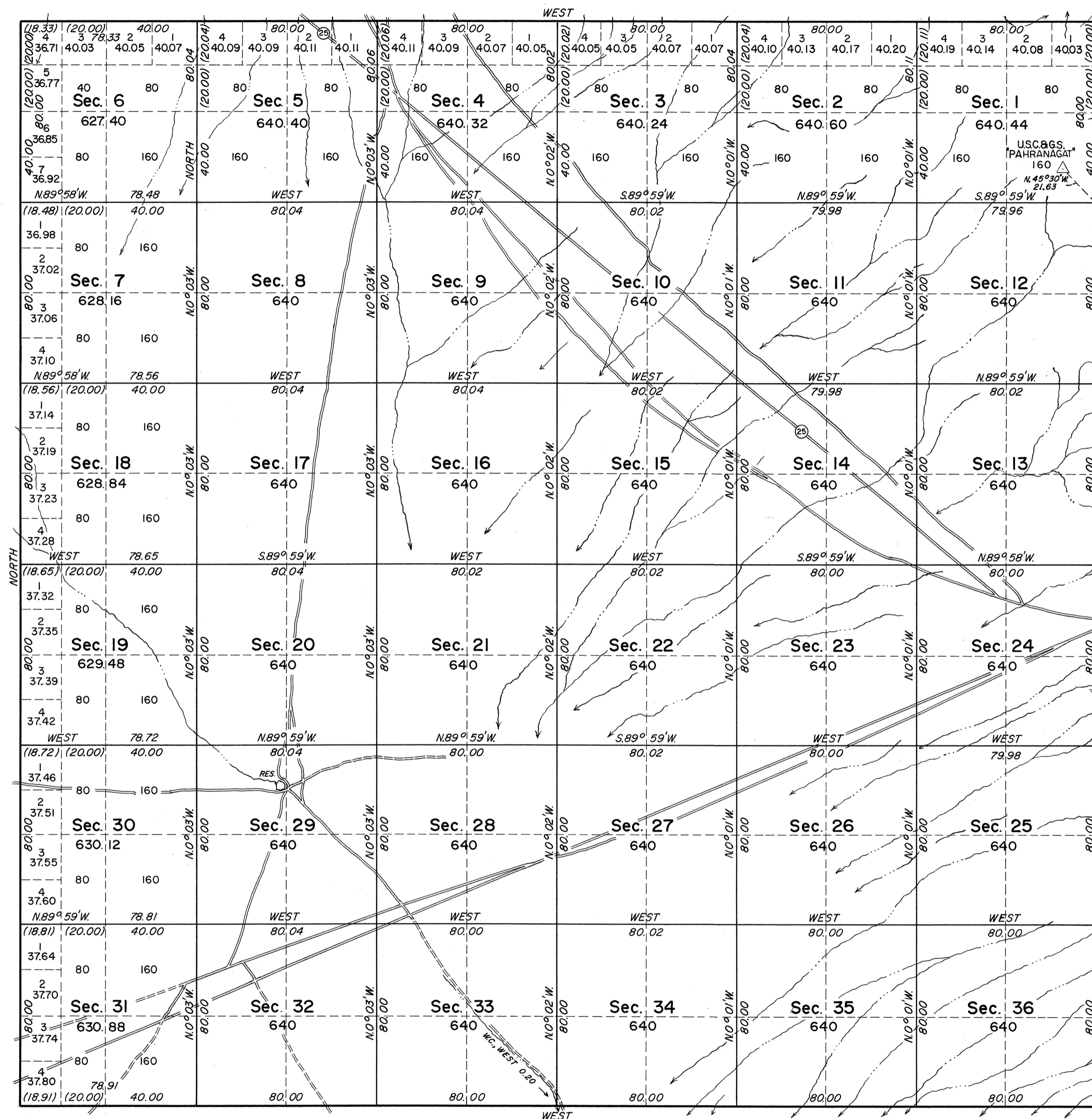


ORIGINAL

TOWNSHIP 6 SOUTH, RANGE 58 EAST, OF THE MOUNT DIABLO MERIDIAN, NEVADA

OFFICIALLY FILED
NEVADA LAND OFFICE
10:00 A.M. JULY 20, 1967



This plat represents the survey of the north, south, and east boundaries and subdivisional lines of T. 6 S., R. 57 E., Mount Diablo Meridian, Nevada.

The survey was executed by Eldon W. Sibley, Cadastral Surveyor, June 11 to December 2, 1965, under Special Instructions dated June 11, 1965, for Group No. 430, Nevada.



Magnetic Declination
16° E.

UNITED STATES DEPARTMENT OF THE INTERIOR
BUREAU OF LAND MANAGEMENT
Washington, D. C. April 6, 1967

This plat is strictly conformable to the approved field notes, and the survey, having been correctly executed in accordance with the requirements of law and the regulations of this Bureau, is hereby accepted.

For the Director

Lat. 37°22'32.74" N.
Long. 115°24'36.70" W.

E. Sibley
Chief, Division of Engineering

0 10 20 40 80
Scale in Chains
Area Surveyed 22,976.88 Acres

T. 6 S., R. 58 E.