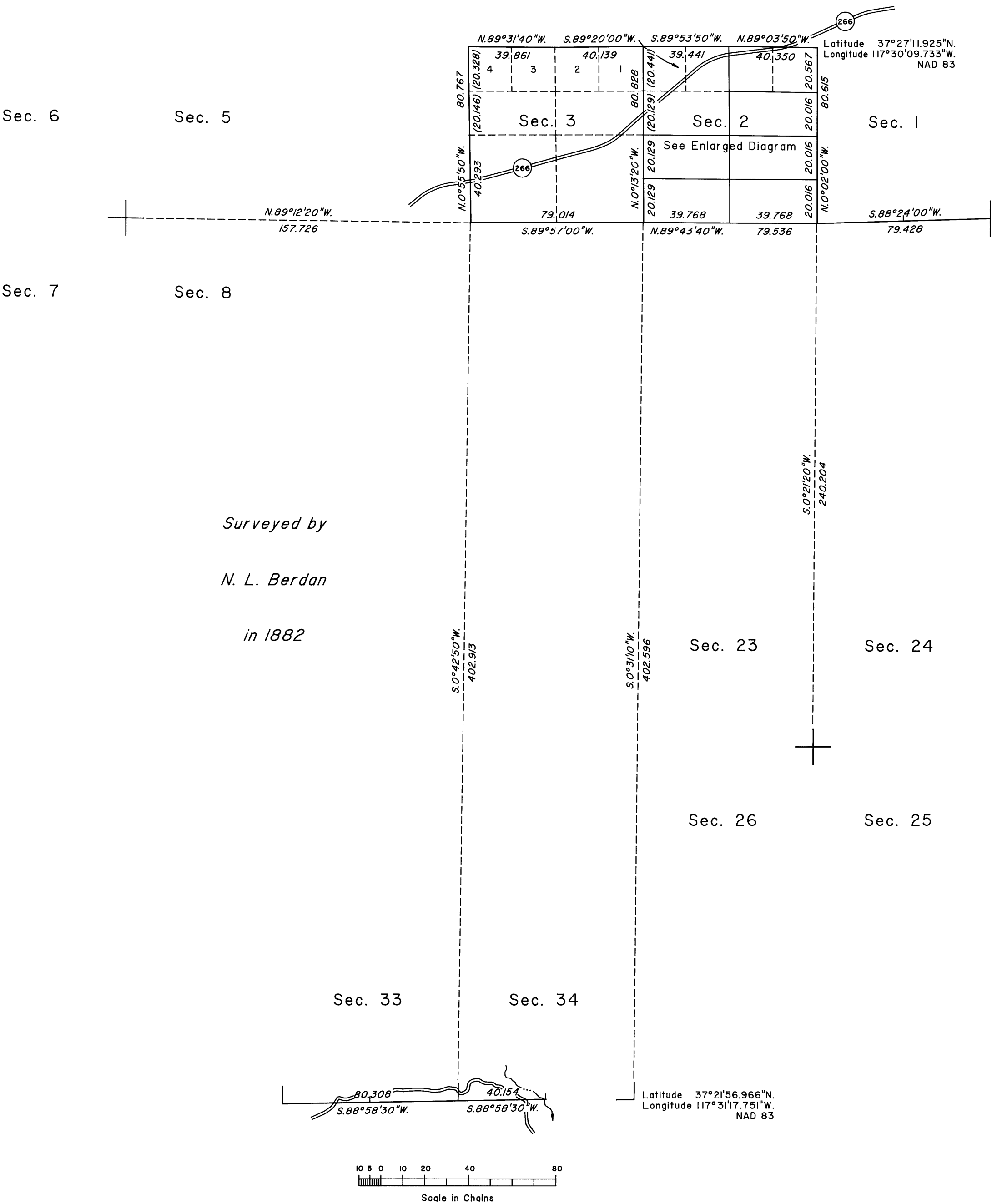
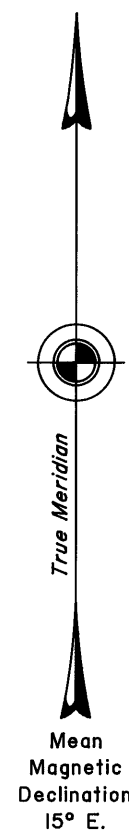
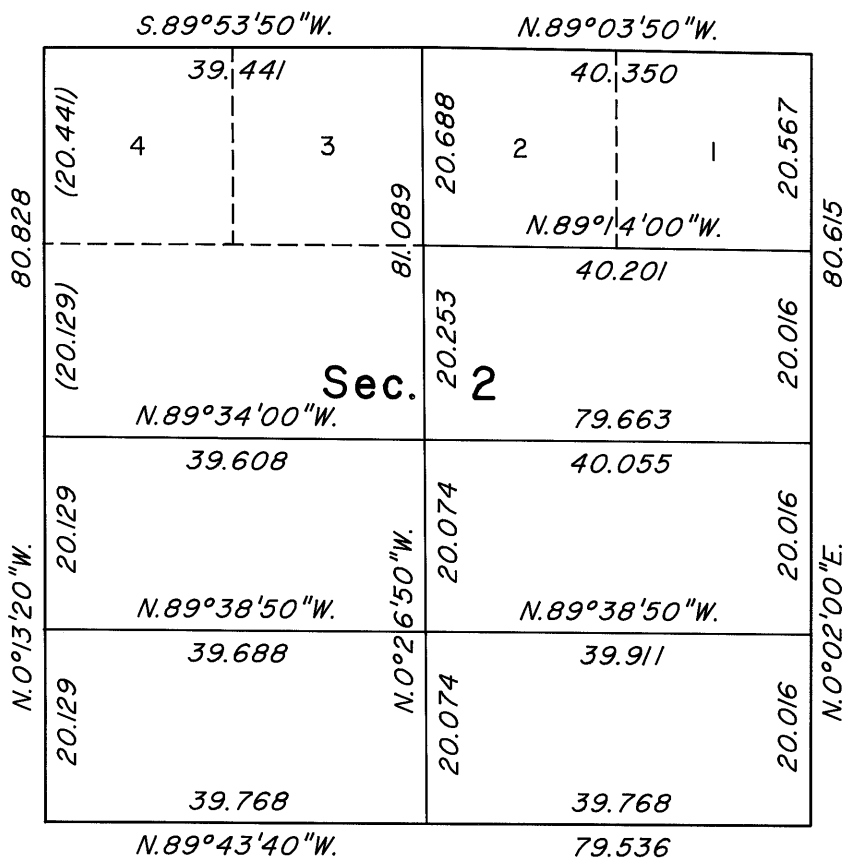


TOWNSHIP 6 SOUTH, RANGE 40 EAST, OF THE MOUNT DIABLO MERIDIAN, NEVADA
DEPENDENT RESURVEY AND SUBDIVISION



ENLARGED DIAGRAM



A history of surveys is contained in the field notes.

A dependent resurvey of a portion of the north boundary was executed concurrently under Township 5 South, Range 40 East, of this same group.

This plat represents the dependent resurvey of portions of the south boundary and subdivisional lines designed to restore the corners in their true original locations according to the best available evidence, and the subdivision of section 2, Township 6 South, Range 40 East, Mount Diablo Meridian, Nevada.

Except as indicated hereon, the lottings and areas are as shown on the plat approved June 28, 1883.

Survey executed by Richard A. Zaninovich and Craig L. Wanless, Cadastral Surveyors, beginning September 18, 2001, and completed July 21, 2003, pursuant to Special Instructions dated August 27, 2001, for Group No. 804, Nevada.

UNITED STATES DEPARTMENT OF THE INTERIOR
BUREAU OF LAND MANAGEMENT

Reno, Nevada July 21, 2005

This plat is strictly conformable to the approved field notes, and the survey, having been correctly executed in accordance with the requirements of law and the regulations of this Bureau, is hereby accepted.

For the Director

David W. Morlan

Chief Cadastral Surveyor, Nevada