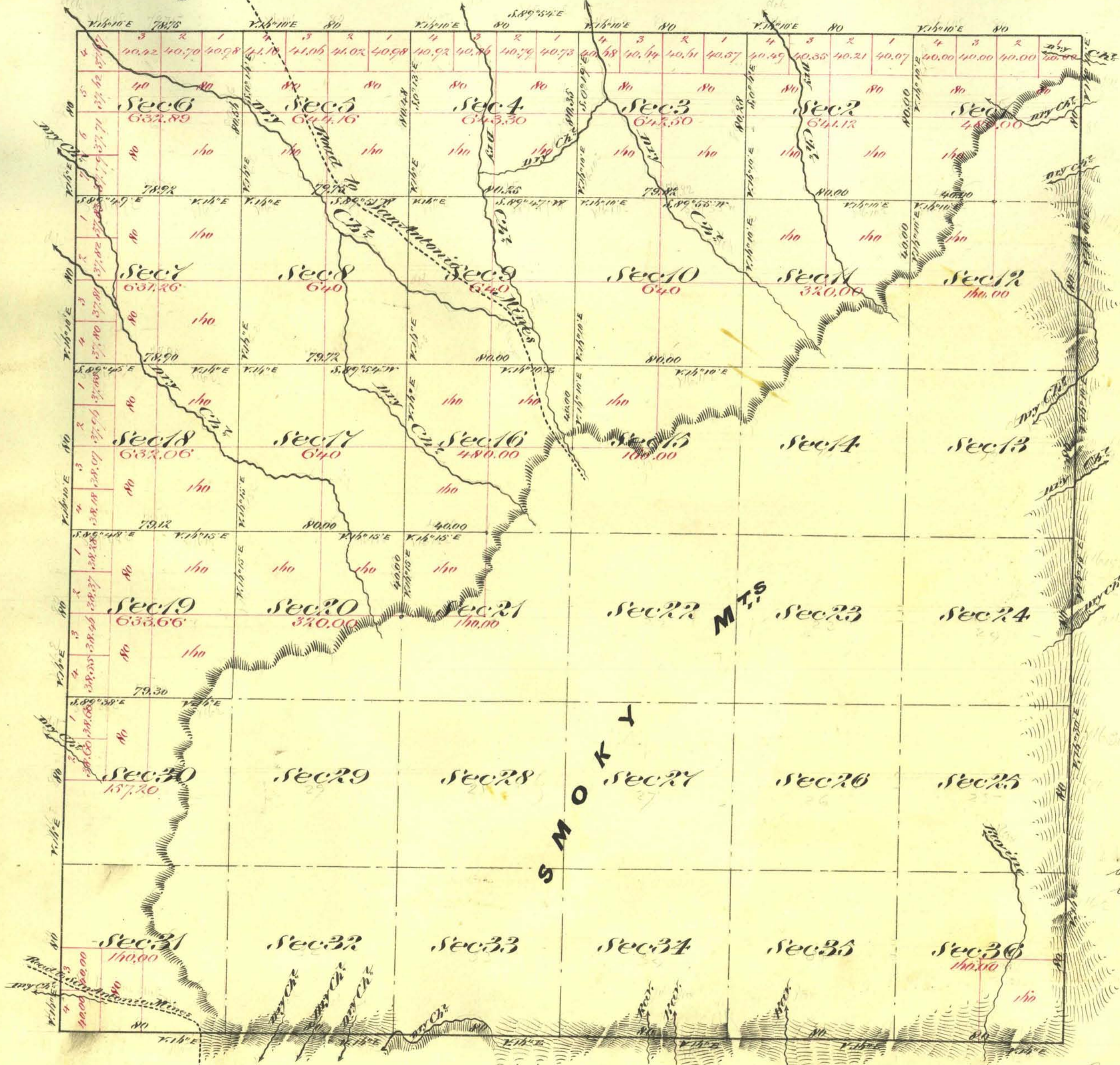


Township N^o 6 North

Range N^o 42 East

Mount Diablo Meridian



Aggregate Area of Public Land (Surveyed) 10,118.15 Acres
 Estimated " " Mountains (unsurveyed) 12,794.40 "
 Aggregate 22,912.55 "

Commenced July 8th 1873
 Completed " " 11th 1873

| Surveys Designated | By Whom Surveyed | Date of Commencement | Amt of Survey Acs Chs Lks | When Surveyed |
|---------------------|--|----------------------------|------------------------------|---------------|
| South East Boundary | C. C. Tracy | July 2 nd 1874 | 12 00 00 | 1874 |
| North West " | A. H. Hatch, D. H. Barber & E. Bridges | June 14 th 1873 | 11 78 75 | 1873 |
| Subdivision Lines | " " " " | " " " | 26 37 45 | July 1873 |

37
57

The above Map of Township N^o 6 North Range N^o 42 East Mount Diablo Meridian is strictly conformable to the field notes of surveys thereof on file in this Office which have been examined and approved
 U. S. Surveyor General's Office
 Virginia City, Nevada
 September 8th 1873

V. D.
 T 6 N, R 42 E
 E. S. Davis
 U. S. Surveyor General Nevada