

Resurveyed by D. A. Crain in 1959

N. 89° 57' W. (20.03) 40.16 (20.13) 40.25 S. 89° 57' W. N. 89° 36' W. 40.04 S. 88° 29' W. 40.67

12 41.41 11 41.84

2 5 6

3 8 7

4 13 41.43 2 39.78

9 42.262 5 42.29 6 41.24

N. 87° 15' W. (19.47) 38.94 (19.47) N. 88° 17' 40" W. 34.995 42.262 N. 89° 45' 50" W. 32.189 38.536 S. 85° 37' W. 40.11

6.86 C. C. R. 39 E. R. 40 E. T. 5 N.

Latitude 38° 20' 0.599" N. Longitude 117° 31' 02.021" W. NAD 83 (2011) (EPOCH: 2010.0000)

Latitude 38° 19' 44.388" N. Longitude 117° 31' 34.968" W. NAD 83 (2011) (EPOCH: 2010.0000)

Resurveyed by D. A. Crain in 1959

N. 3° 21' W. 41.61

41.515 39.463

N. 3° 23' 10" W. 2.052

See Detail

Sec. 31

Sec. 32

Sec. 6

Sec. 5

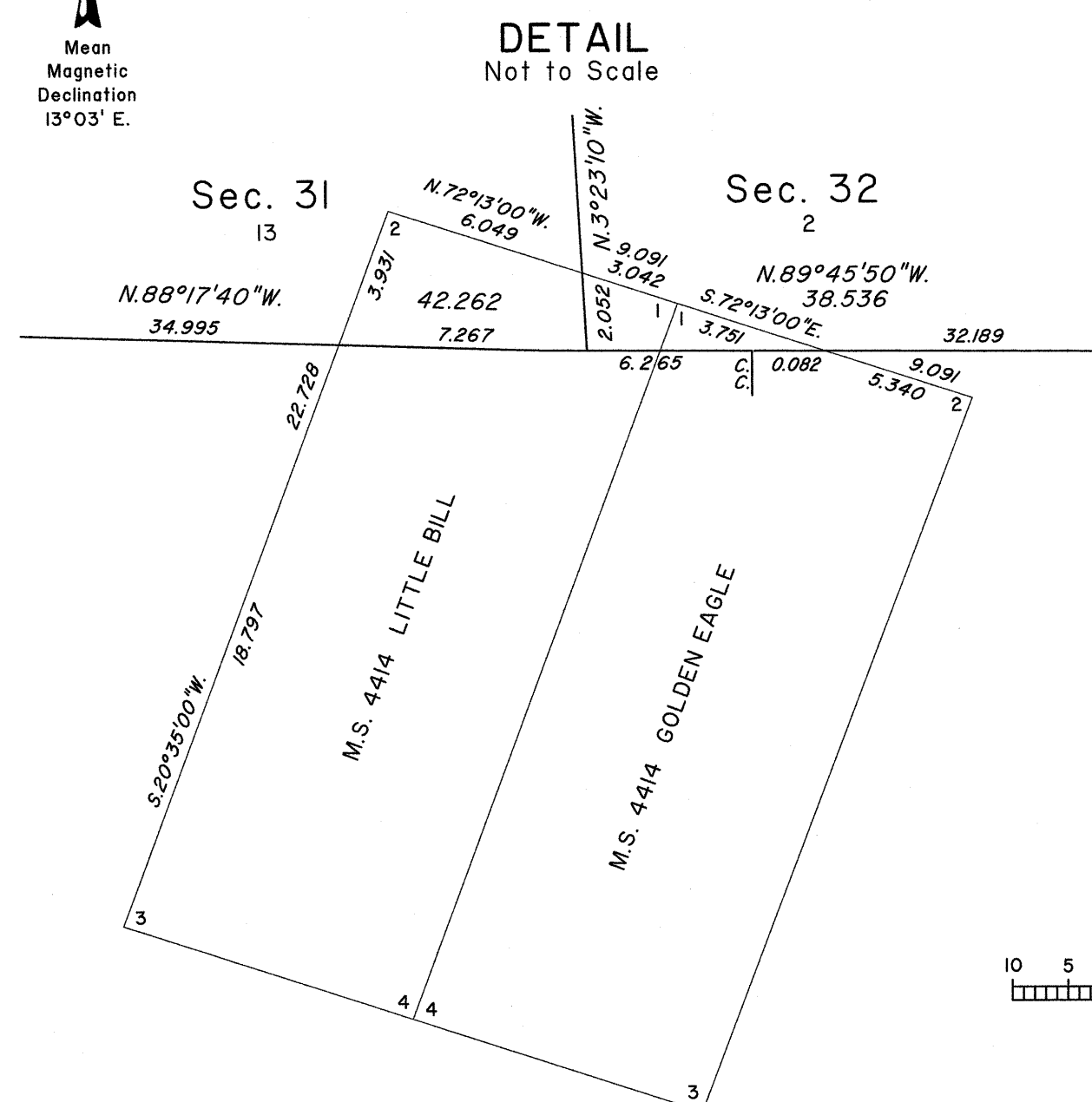
FIRST STANDARD PARALLEL NORTH

DETAIL Not to Scale

Survey executed by Brandon G. Courtright, Cadastral Surveyor, beginning March 5, 2014 and completed March 6, 2014, pursuant to Special Instructions dated February 21, 2014, for Group No. 932, Nevada.

Michael O. Harrington

Chief Cadastral Surveyor for Nevada



A graphical scale bar labeled "Scale in Chains". The scale is marked with numbers 10, 5, 0, 5, 10, 15, 20, 30, and 40. The markings are evenly spaced along a horizontal line.

CW M

T.6N., R.40E., M.D.M.