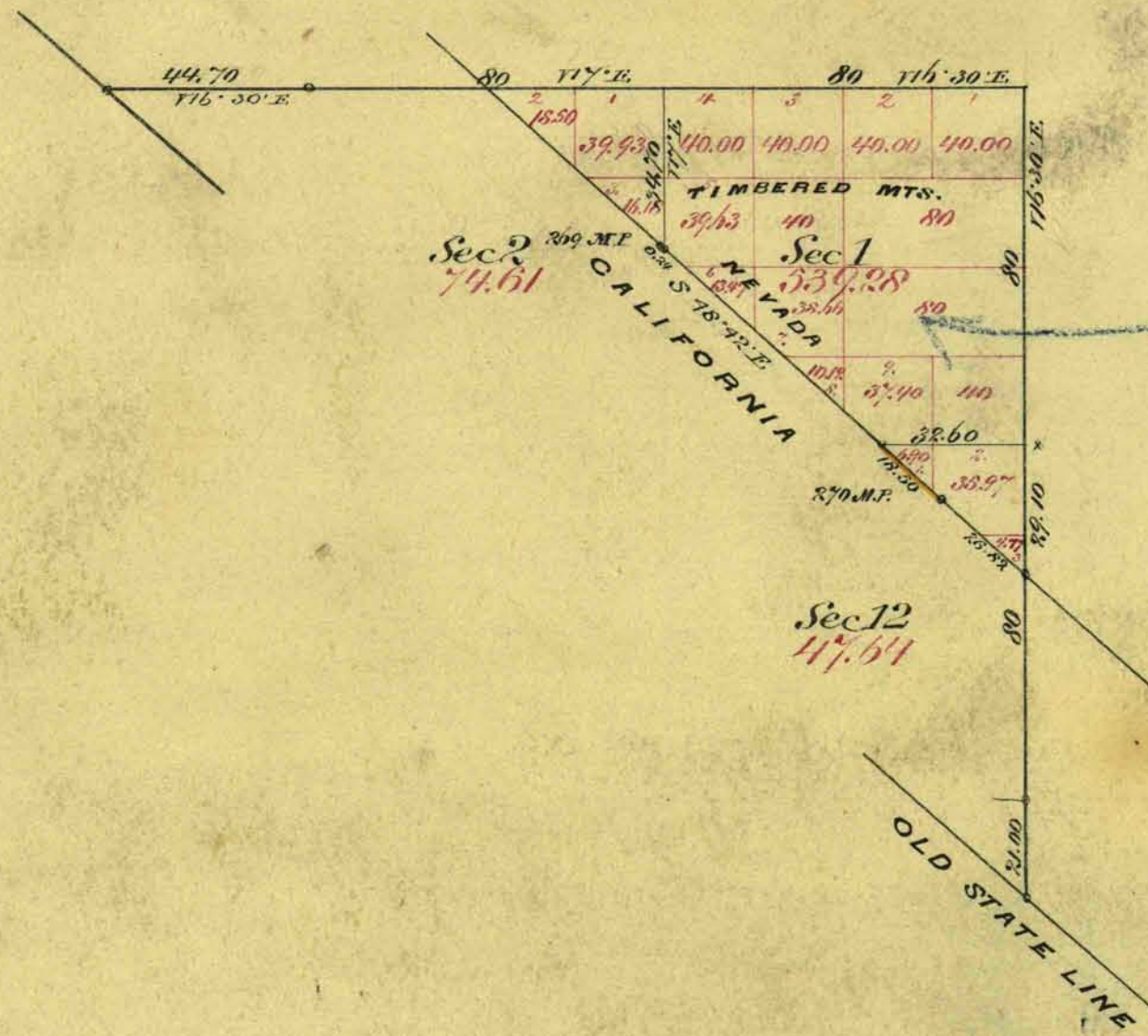


Township N<sup>o</sup> 6 North

Range N<sup>o</sup> 25 East

Mount Diablo Meridian



Mono Nat. For.

Aggregate Area of Public Land Surveyed 1171.53 Acres

Commenced Aug. 1<sup>st</sup> 1878  
Completed " " "

| Surveys designated        | By whom Surveyed     | Date of Contact            | Amt. of Survey | When Surveyed | No. Cor. |
|---------------------------|----------------------|----------------------------|----------------|---------------|----------|
| N + S. boundary           | R. S. Chase          | Aug. 14 <sup>th</sup> 1869 |                | 1869          | 29       |
| State Line                | A. N. Van Schmidt    | July 20 <sup>th</sup> 1872 |                | 1872          |          |
| Subdivisions at S10       | Walch Barker & Eaton | Oct. 15 <sup>th</sup> 1878 | 0 - 112 - 30   | Aug 1878      | 78       |
| Corrections on State Line | "                    | "                          | 18 - 74        | "             | "        |

The above plat of Township N<sup>o</sup> 6 North of Range N<sup>o</sup> 25 East Mount Diablo Meridian is strictly conformable to the field notes of the surveys thereof on file in this office which have been examined and approved  
 U.S. Surveyor General's Office  
 Virginia City Nev.  
 October 18<sup>th</sup> 1878

E. S. Davis  
 U.S. Surveyor Gen. Nev.

0471

T6 N. R25 E

VD