

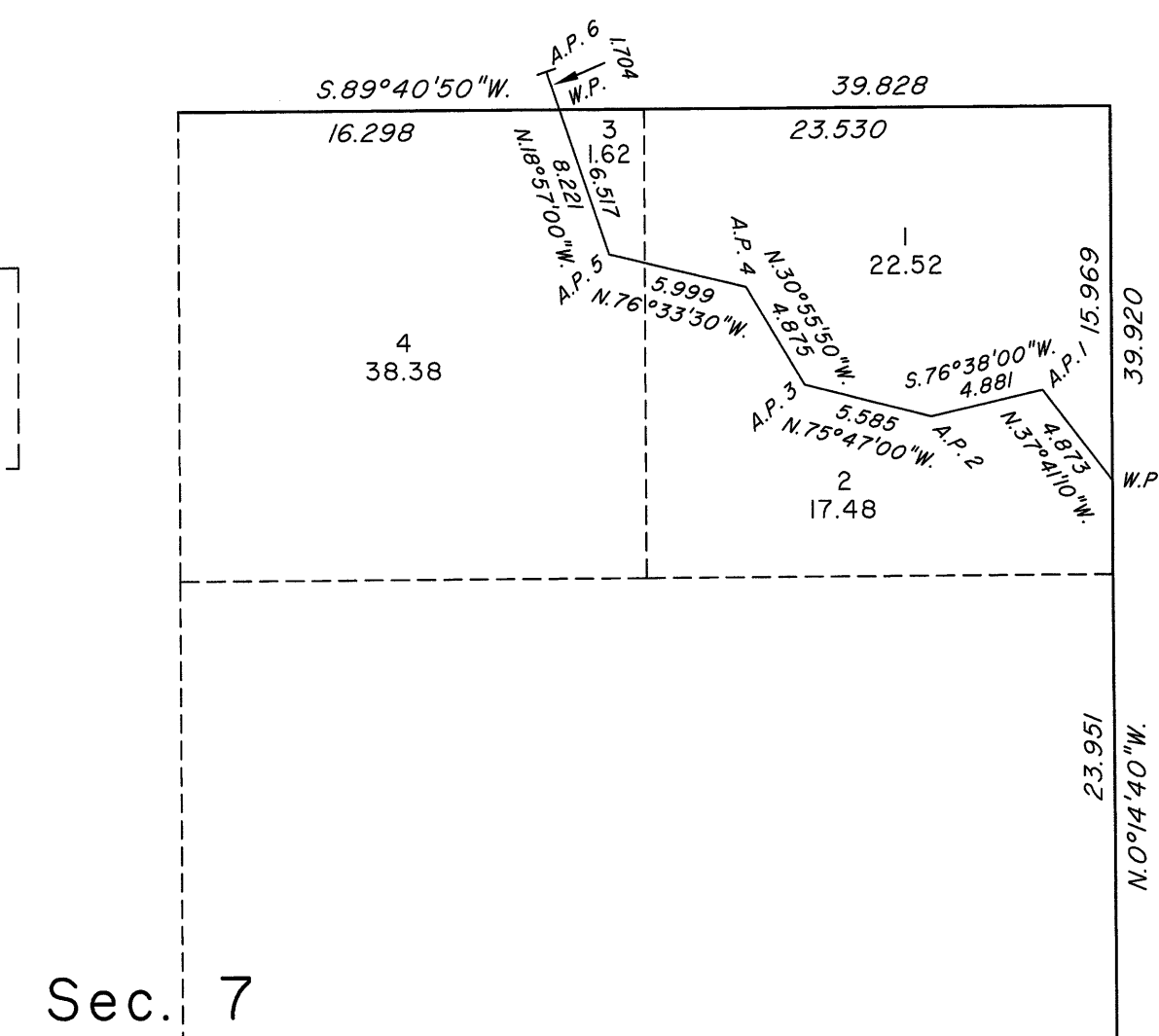
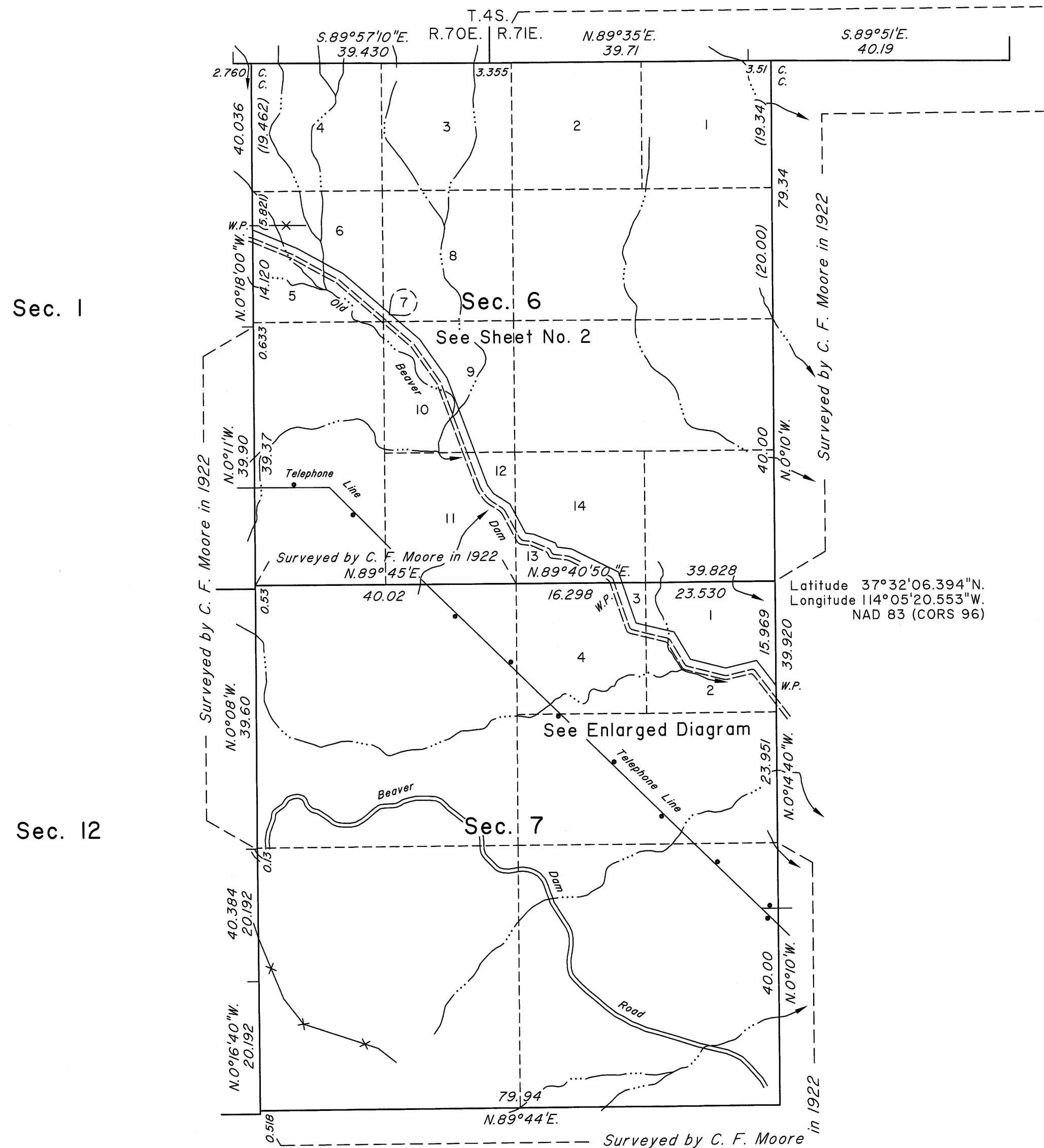
DEPENDENT RESURVEY AND METES-AND-BOUNDS SURVEY

ENLARGED DIAGRAM

Sec. 36

Sec. 31

FIRST STANDARD PARALLEL SOUTH



A graphical scale bar labeled "Scale in Chains". The bar has a total length of 20 units. Major markings are at 10, 5, 0, 5, 10, and 20. The bar is divided into 10 equal segments, each representing 2 units. The segments are numbered 1 through 10 from left to right, with the numbers placed below the bar. The bar is labeled "Scale in Chains" below the center.

A history of surveys is contained in the field notes.

A dependent resurvey of the First Standard Parallel South through a portion of Range 70 East and portions of the East boundary of Township 5 South, Range 70 East, were executed concurrently under this same group.

This plat, in two sheets, represents the dependent resurvey of a portion of the subdivisional lines designed to restore the corners in their true original locations according to the best available evidence, and a metes-and-bounds survey through sections 6 and 7, Township 5 South, Range 71 East, Mount Diablo Meridian, Nevada.

Except as indicated hereon, the lottings and areas are as shown on the plat approved March 5, 1924.

Survey executed by Lance A. Barney, Cadastral Surveyor,
beginning August 6, 2008, and completed September 10,
2008, pursuant to Special Instructions dated July 30, 2008,
for Group No. 868, Nevada.

UNITED STATES DEPARTMENT OF THE INTERIOR
BUREAU OF LAND MANAGEMENT

Reno, Nevada June 21, 2011

This plat is strictly conformable to the approved field notes, and the survey, having been correctly executed in accordance with the requirements of law and the regulations of this Bureau, is hereby accepted.

For the Director

David H. Norton

Chief Cadastral Surveyor, Nevada

T.5 S., R.71 E., M.D.M.