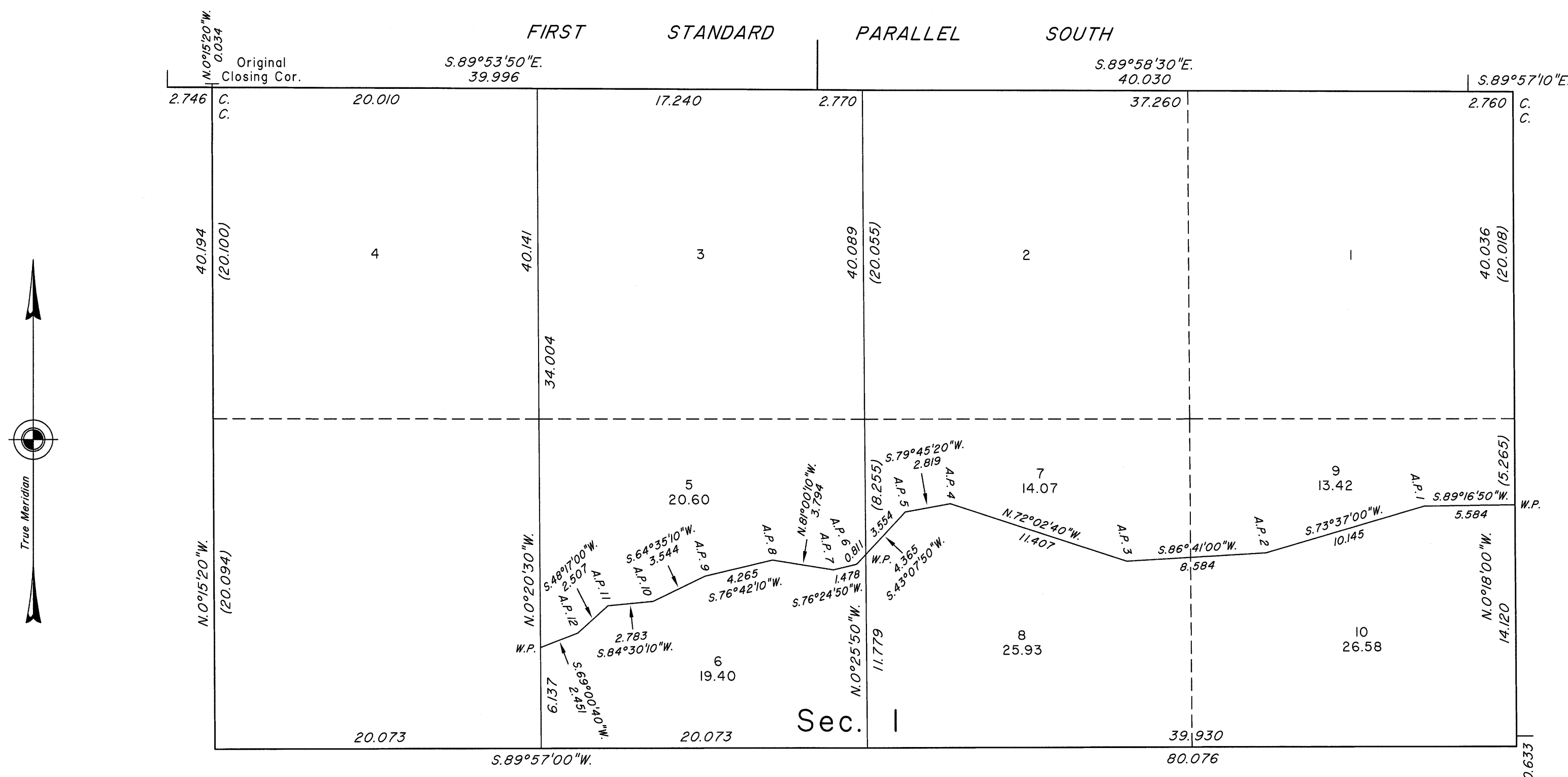


TOWNSHIP 5 SOUTH, RANGE 70 EAST, OF THE MOUNT DIABLO MERIDIAN, NEVADA

ENLARGED DIAGRAM OF N1/2 SECTION 1

Sec. 35

Sec. 36



Reference should be made to Sheet No. 1 for survey information.

UNITED STATES DEPARTMENT OF THE INTERIOR
BUREAU OF LAND MANAGEMENT

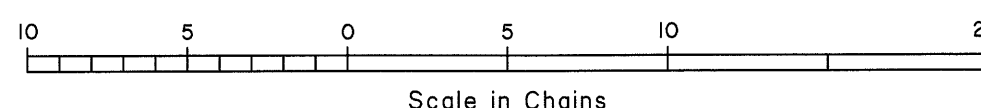
Reno, Nevada June 21, 2011

This plat is strictly conformable to the approved field notes, and the survey, having been correctly executed in accordance with the requirements of law and the regulations of this Bureau, is hereby accepted.

For the Director

David L. M. [Signature]

Chief Cadastral Surveyor, Nevada



T.5S., R.70E., M.D.M.