

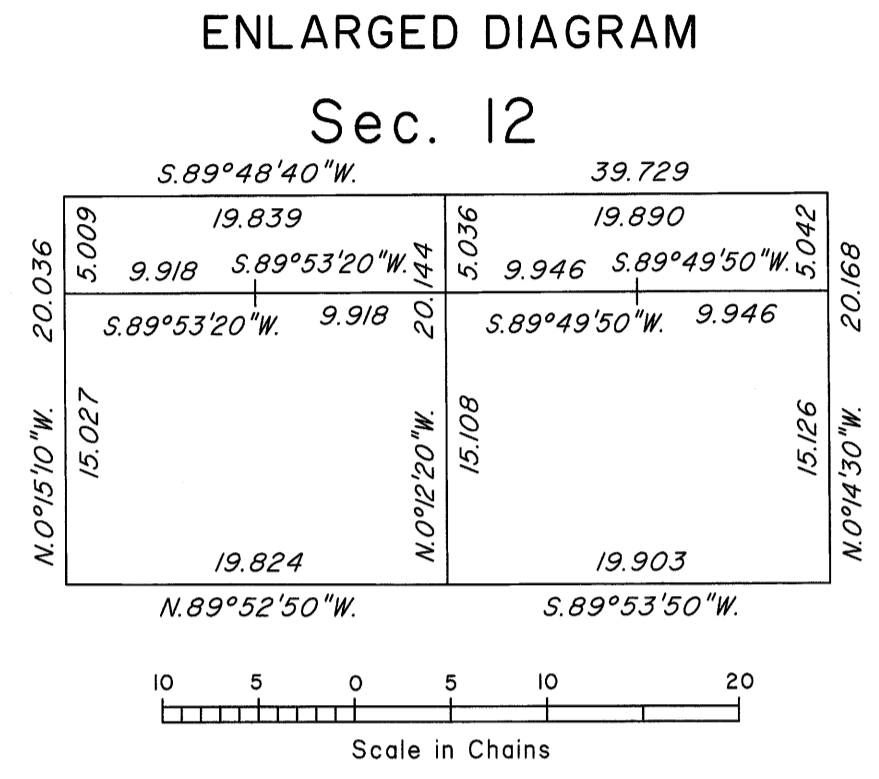
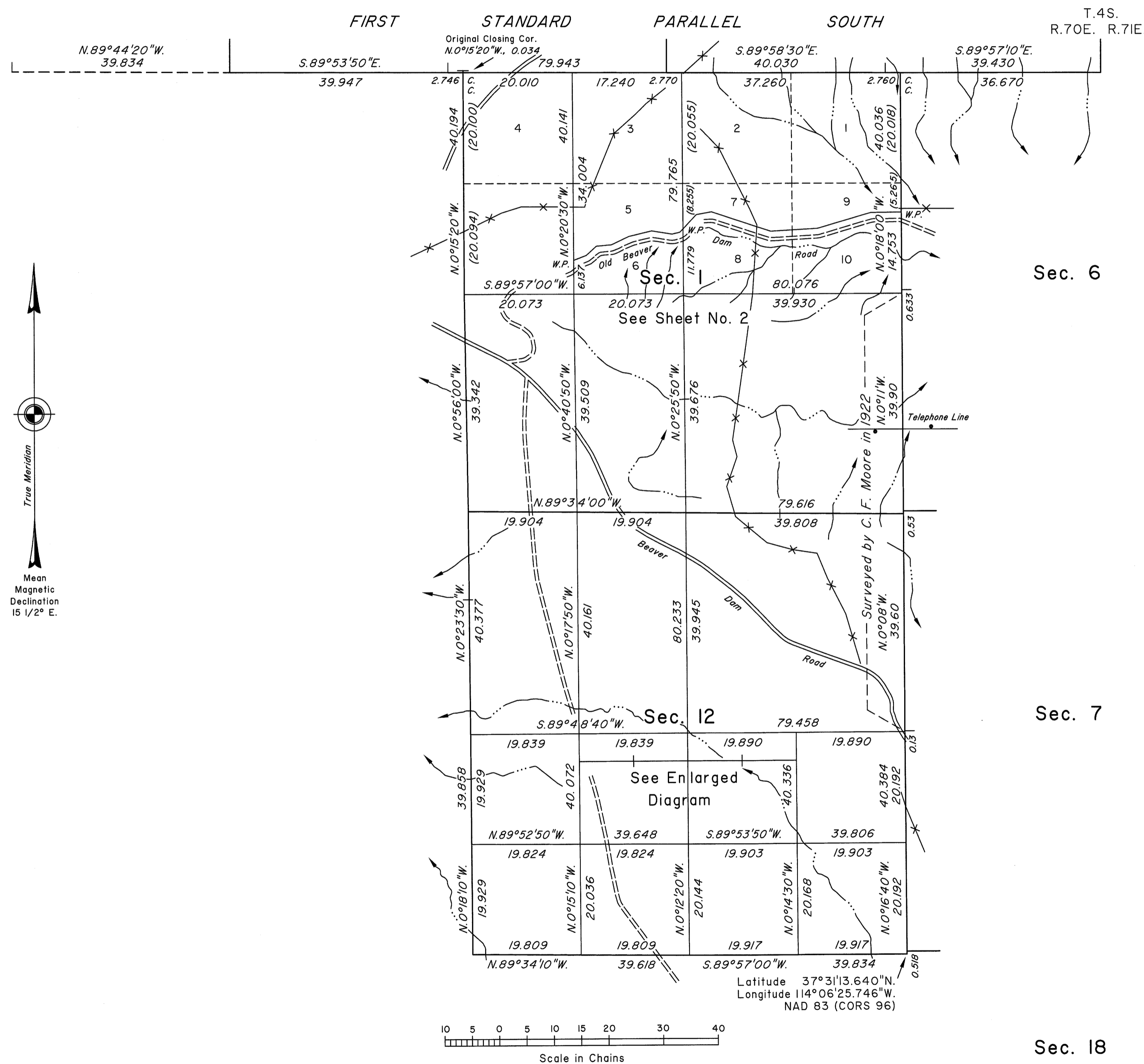
TOWNSHIP 5 SOUTH, RANGE 70 EAST, OF THE MOUNT DIABLO MERIDIAN, NEVADA

DEPENDENT RESURVEY, SUBDIVISION AND METES-AND-BOUNDS SURVEY

Sec. 34

Sec. 35

Sec. 36



A history of surveys is contained in the field notes.

This plat, in two sheets, represents the dependent resurvey of the First Standard Parallel South through a portion of Range 70 East, portions of the east boundary and a portion of the subdivisional lines designed to restore the corners in their true original locations according to the best available evidence, and the subdivision of Sections 1 and 12 and a metes-and-bounds survey in Section 1, Township 5 South, Range 70 East, Mount Diablo Meridian, Nevada.

Except as indicated hereon, the lottings and areas are as shown on the plat approved April 8, 1902 and accepted July 3, 1902.

Survey executed by Lance A. Barney, Cadastral Surveyor, beginning August 6, 2008, and completed June 28, 2009, pursuant to Special Instructions dated July 30, 2008, for Group No. 868, Nevada.

UNITED STATES DEPARTMENT OF THE INTERIOR
BUREAU OF LAND MANAGEMENT

Reno, Nevada June 21, 2011

This plat is strictly conformable to the approved field notes, and the survey, having been correctly executed in accordance with the requirements of law and the regulations of this Bureau, is hereby accepted.

For the Director

David D. Moran

Chief Cadastral Surveyor, Nevada

OFFICIALLY FILED
NEVADA STATE OFFICE
at 10:00 AM on June 23, 2011