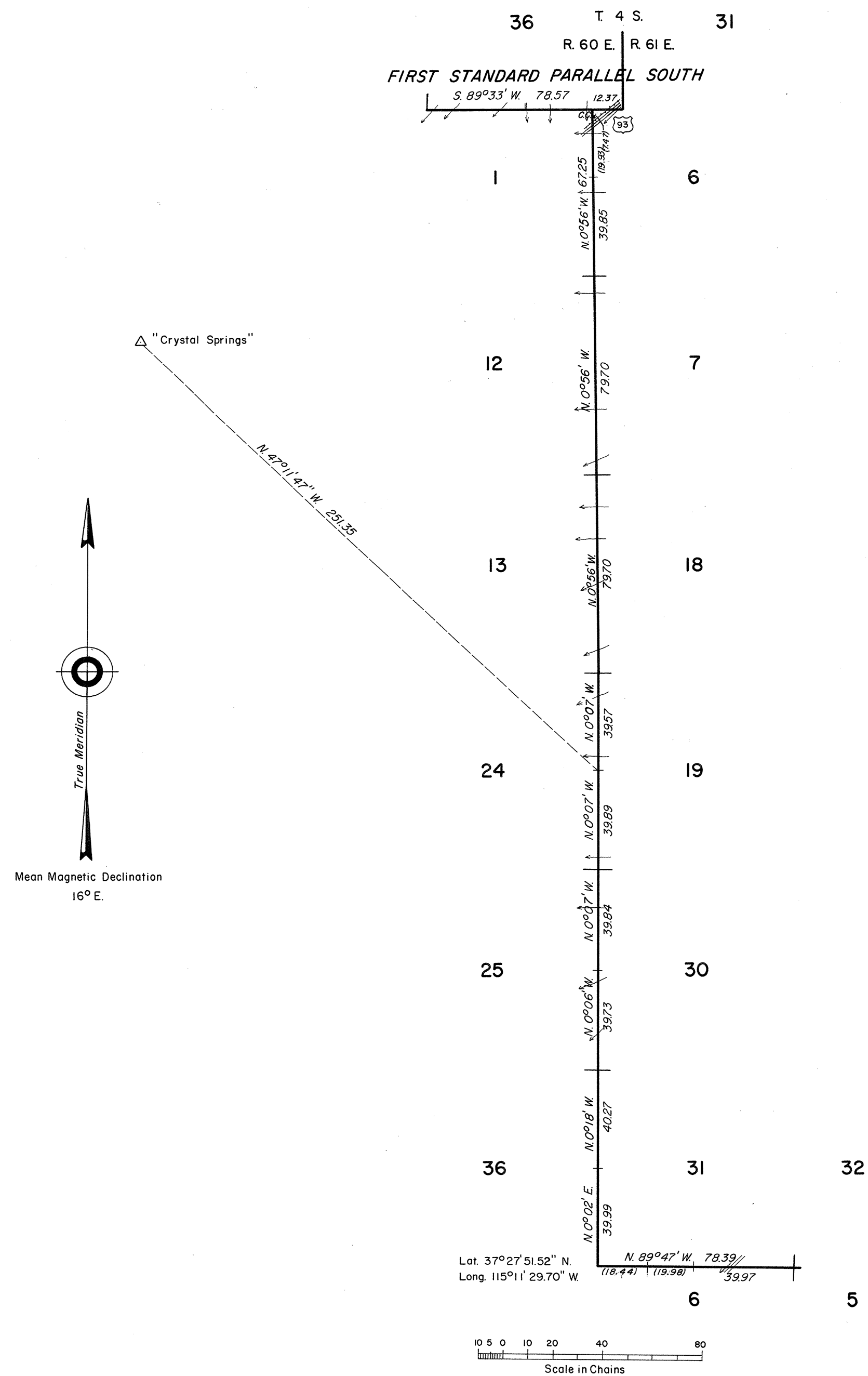


TOWNSHIP 5 SOUTH, RANGES 60 and 61 EAST, OF THE MOUNT DIABLO MERIDIAN, NEVADA

DEPENDENT RESURVEY



History of earlier surveys contained in the field notes.

This plat represents a retracement and reestablishment of a portion of the First Standard Parallel South through R. 60 E., a portion of the township line between Tps. 5 and 6 S., through R. 61 E., and the range line between Rs. 60 and 61 E., through T. 5 S., designed to restore the corners in their true original locations according to the best available evidence.

Survey executed by Eldon W. Sibley, beginning October 28, and completed December 14, 1964, pursuant to Special Instructions for Group No. 422, Nevada, dated October 12, 1964.

UNITED STATES DEPARTMENT OF THE INTERIOR
BUREAU OF LAND MANAGEMENT
Washington, D. C. August 11, 1965

This plat is strictly conformable to the approved field notes, and the survey, having been correctly executed in accordance with the requirements of law and the regulations of this Bureau, is hereby accepted.

For the Director

R.E. Brown

Acting Chief, Division of Engineering

Lat. $37^{\circ} 27' 51.52'' N.$
Long. $115^{\circ} 11' 29.70'' W.$

