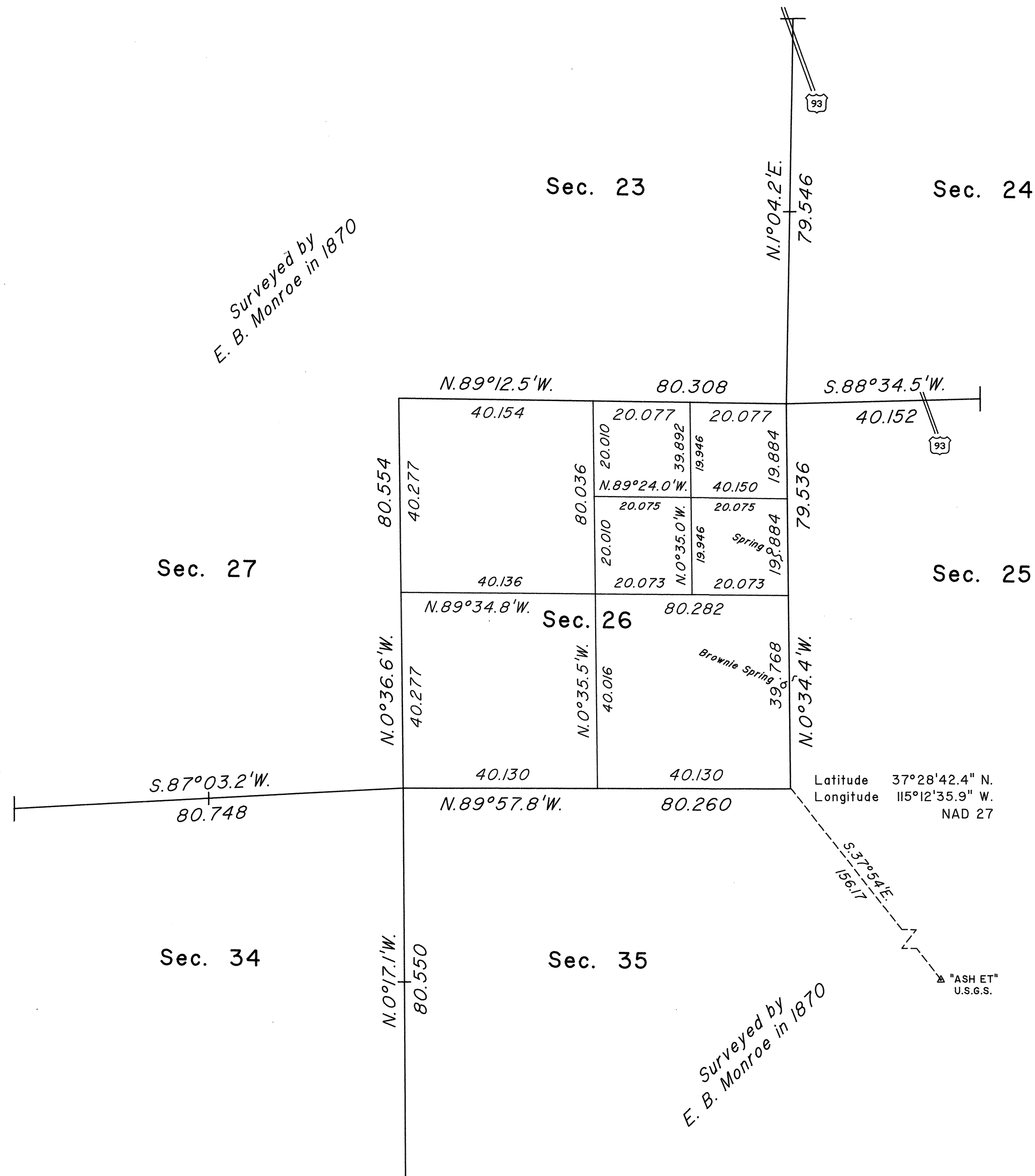
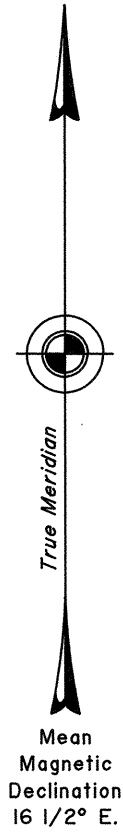


TOWNSHIP 5 SOUTH, RANGE 60 EAST, OF THE MOUNT DIABLO MERIDIAN, NEVADA
DEPENDENT RESURVEY AND SUBDIVISION OF SECTION 26

OFFICIALLY FILED
NEVADA STATE OFFICE
at 10:00 AM on SEPTEMBER 9, 1993



A history of surveys is contained in the field notes.

This plat represents the dependent resurvey of a portion of the subdivisional lines designed to restore the corners in their true original locations according to the best available evidence, and the subdivision of section 26, Township 5 South, Range 60 East, Mount Diablo Meridian, Nevada.

Latings and areas are as shown on the plat approved October 20, 1870.

Survey executed by Neil R. Forsyth, Cadastral Surveyor, beginning August 30, 1990 and completed September 17, 1990, pursuant to Special Instructions dated August 21, 1990, for Group No. 693, Nevada.

Latitude 37°28'42.4" N.
Longitude 115°12'35.9" W.
NAD 27

UNITED STATES DEPARTMENT OF THE INTERIOR
BUREAU OF LAND MANAGEMENT

Reno, Nevada September 3, 1993

This plat is strictly conformable to the approved field notes, and the survey, having been correctly executed in accordance with the requirements of law and the regulations of this Bureau, is hereby accepted.

For the Director

John S. Parrish

Chief Cadastral Surveyor, Nevada

