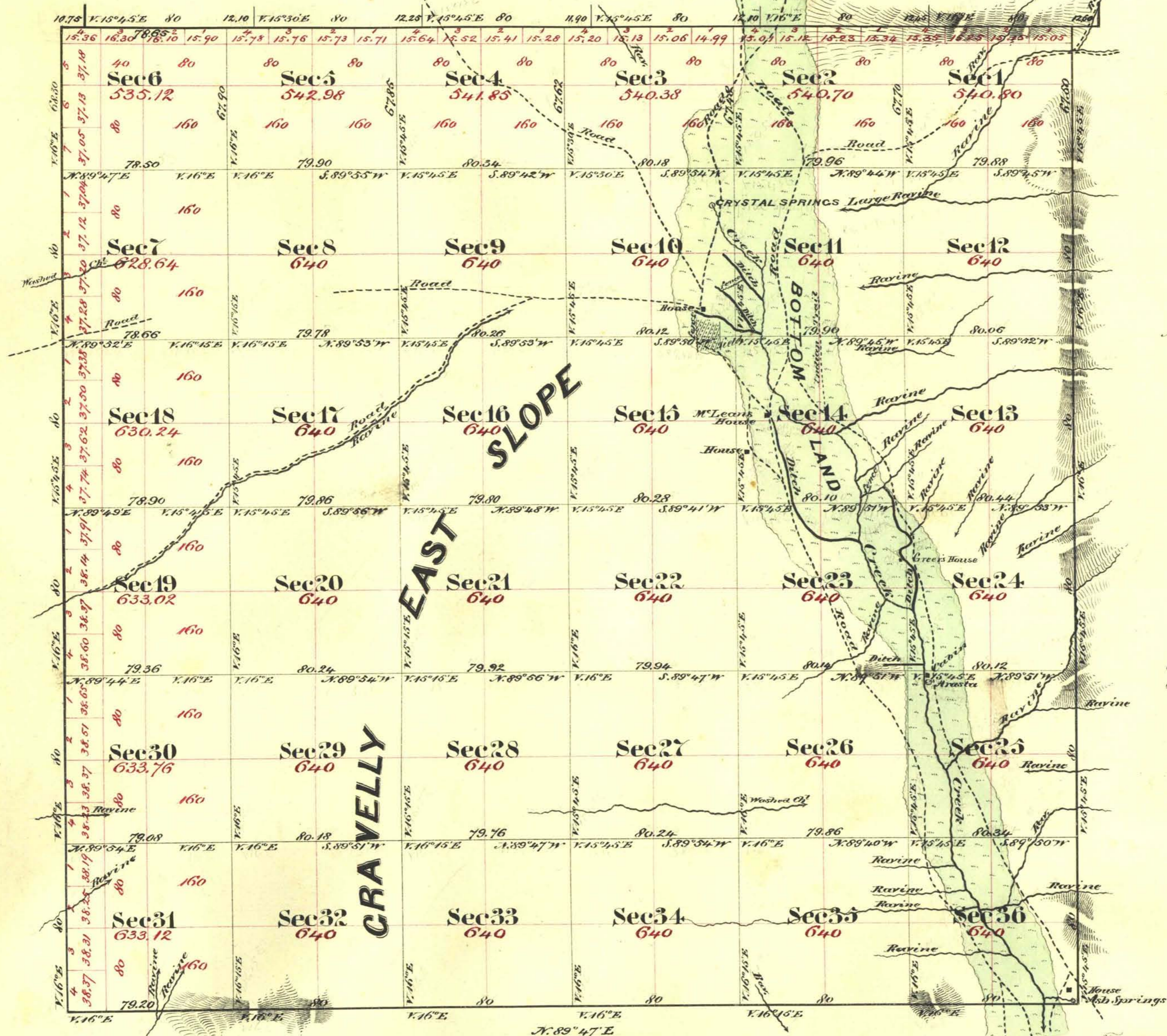


Township N° 5 South

Range N° 60 East

Mount Diablo Meridian



Aggregate Area of Public Land 22,400.61 Acres

Commenced August 29th 1870.
Completed September 4th

Surveys Designated	By Whom Surveyed	Date of Contract	Amount of Survey Mcs. cts. in.	When Surveyed	7 th Cor.
North Boundary of Township	E. S. Morris	October 1 st 1869	6. 00. 00.	1869	31
Rest of Township lines	" "	December 12 th 1869	17. 55. 00	1870	34
Subdivision lines	" "	August 13 th 1870	59. 14. 65	Aug & Sep. 1870	35

The above Map of Township N° 5 South Range N° 60 East Mount Diablo Meridian is strictly conformable to the field notes of the surveys thereof on file in this Office which have been examined and approved
 U. S. Surveyor General's Office
 Virginia City, Nevada
 October 20th 1870

E. S. Davis
 U. S. Surveyor General Nevada