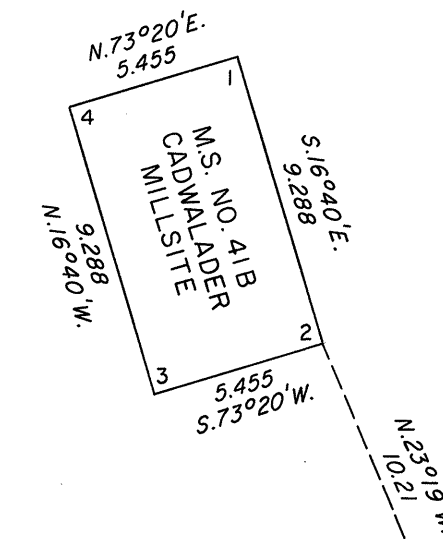


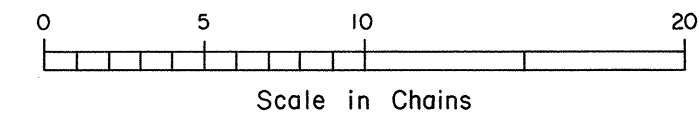
ORIGINAL

TOWNSHIP 5 SOUTH, RANGE 56 EAST, OF THE MOUNT DIABLO MERIDIAN, NEVADA

ENLARGED DIAGRAM



Sec. 20 | Sec. 21
Sec. 29 | Sec. 28



History of the earlier surveys is contained in the field notes.

This plat represents a dependent resurvey of Mineral Survey No. 41 B, designed to restore the corners in their true original locations according to the best available evidence; and the survey of a portion of the south boundary and a portion of the subdivisional lines of T. 5 S., R. 56 E., Mount Diablo Meridian, Nevada.

Survey executed by Robert A. Pratt, Cadastral Surveyor, beginning November 19, 1988, and completed March 20, 1989, under Special Instructions dated October 13, 1988, for Group No. 667, Nevada.

UNITED STATES DEPARTMENT OF THE INTERIOR
BUREAU OF LAND MANAGEMENT

Reno, Nevada April 19, 1989

This plat is strictly conformable to the approved field notes, and the survey, having been correctly executed in accordance with the requirements of law and the regulations of this Bureau, is hereby accepted.

For the Director

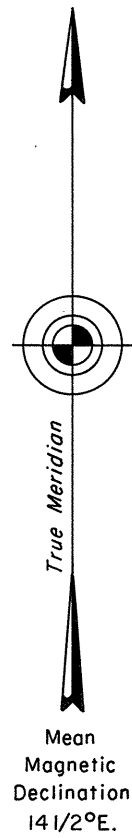
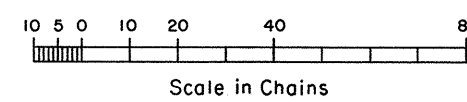
Lucel E. Bland

Chief Cadastral Surveyor

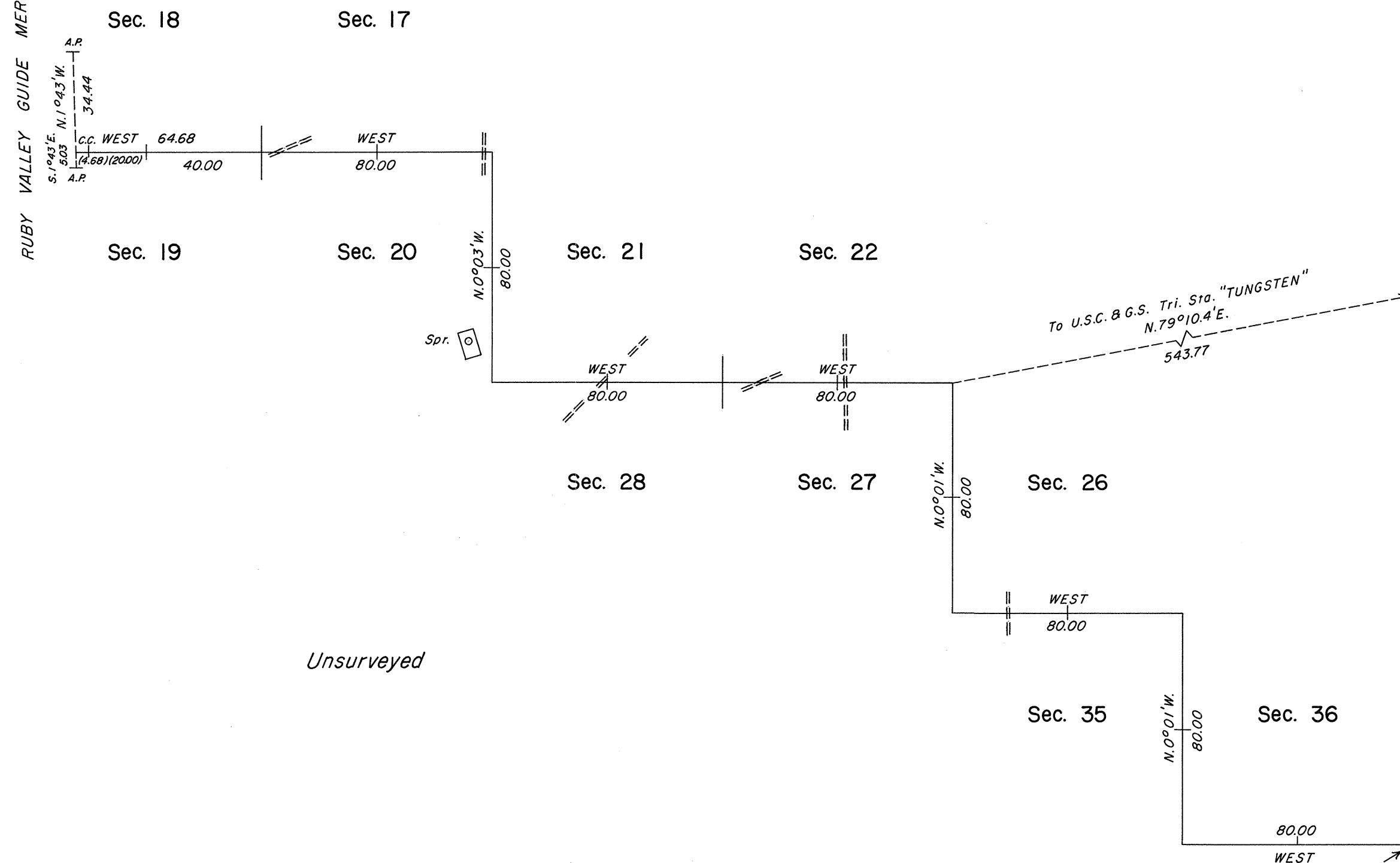
Latitude 37°27'45.8"N.
Longitude 115°37'39.7"W.
NAD 27

Unsurveyed

Unsurveyed



RUBY VALLEY GUIDE MERIDIAN



T. 5 S., R. 56 E., M.D.M.