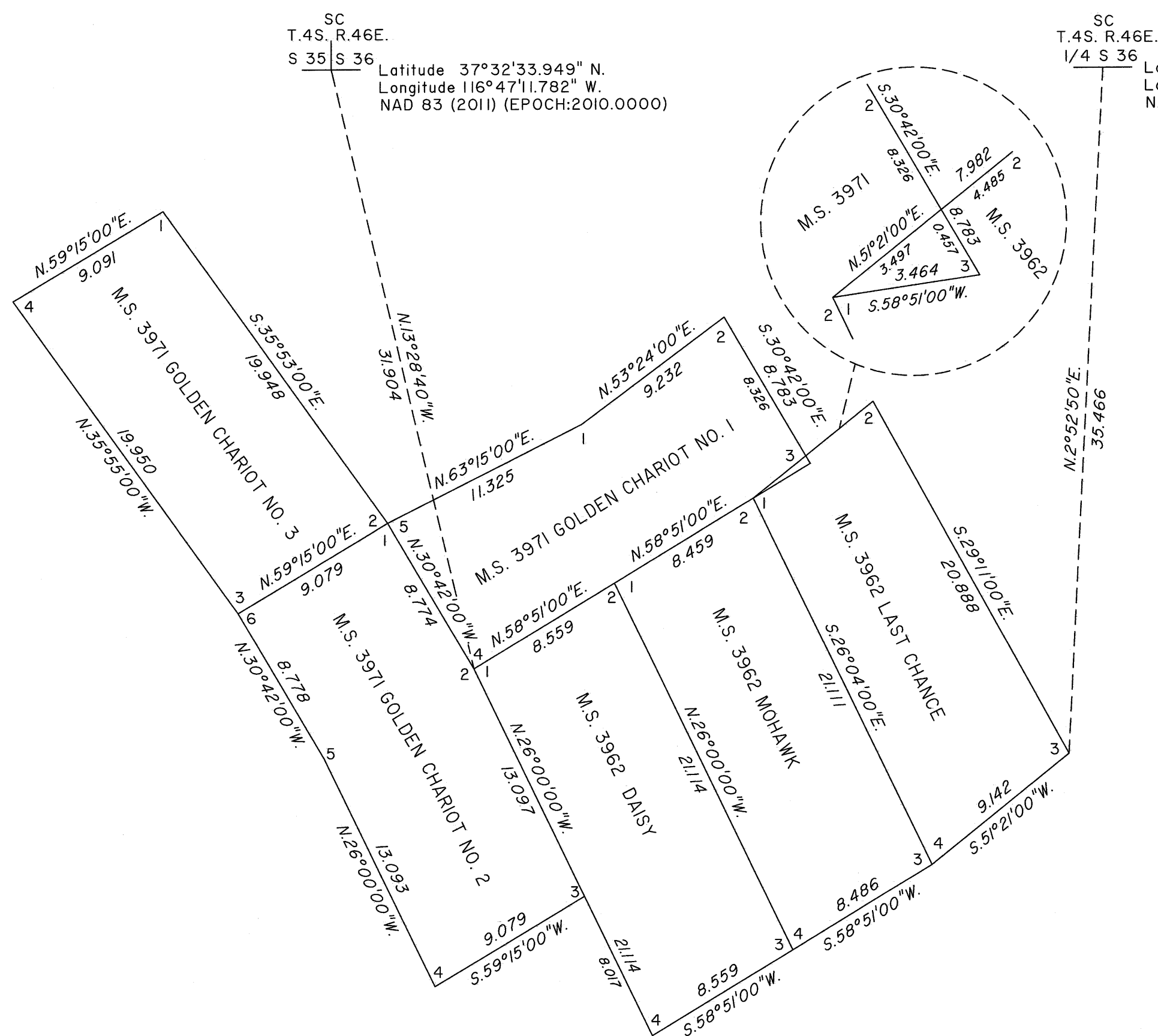


A diagram of a compass rose. It consists of a vertical line with an arrow pointing upwards and a horizontal line intersecting it at the center. The vertical line is labeled "True Meridian". At the center of the intersection is a circle divided into four quadrants by the intersecting lines. The top-left and bottom-right quadrants are shaded black. Below the diagram, the text "Mean Magnetic Declination 12° 35' E." is written.



This plat represents the dependent resurvey of Mineral Survey Nos. 3962 and 3971 designed to restore the corners in their true original locations according to the best available evidence, in unsurveyed Township 5 South, Range 46 East, Mount Diablo Meridian, Nevada.

Survey executed by Brandon K. Grace, Cadastral Surveyor,
beginning May 22, 2015 and completed May 25, 2015,
pursuant to Special Instructions dated May 20, 2015, for
Group No. 946, Nevada

Reno, Nevada July 29, 2015

This plat is strictly conformable to the approved field notes, and the survey, having been correctly executed in accordance with the requirements of law and the regulations of this Bureau, is hereby accepted.

For the Director

Michael S. Hammer

Chief Cadastral Surveyor for Nevada

TOTAL AREA RESURVEYED = 108.33 ACRES

