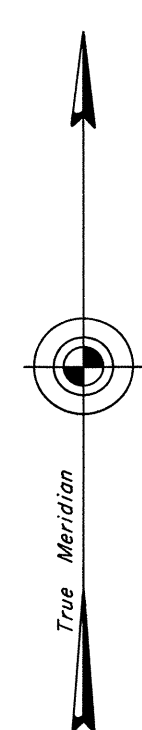
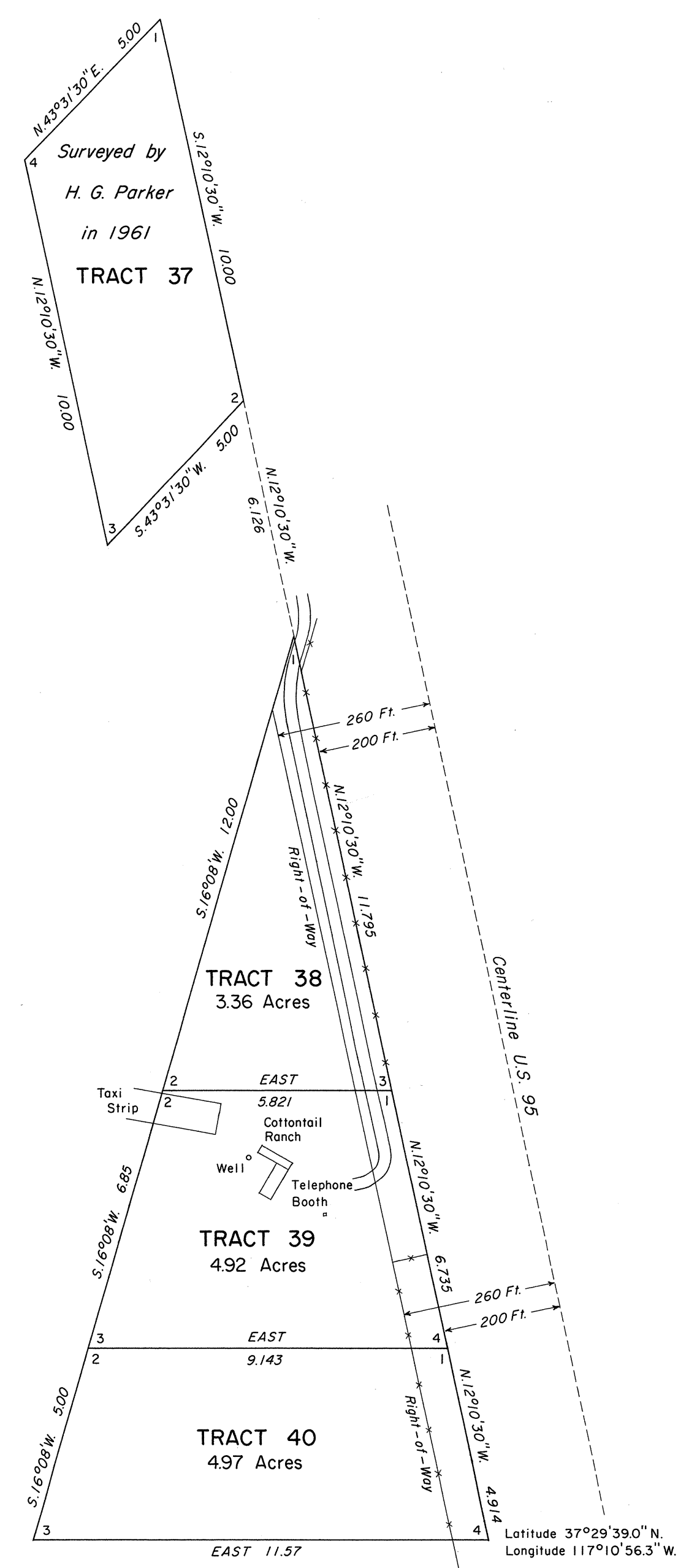


ORIGINAL

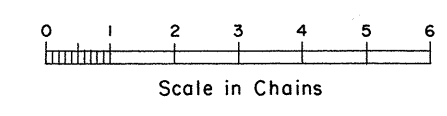
OFFICIALLY FILED
NEVADA LAND OFFICE
10:00am 9/17/1971

TOWNSHIP 5 SOUTH, RANGE 43 EAST, OF THE MOUNT DIABLO MERIDIAN, NEVADA, (UNSURVEYED)

SURVEY OF TRACTS 38, 39 AND 40



Mean Magnetic Declination
16° 30' E.



Area surveyed: 13.25 Acres

History of the earlier surveys is contained in the field notes.

This plat represents the survey of Tracts 38, 39, and 40, in unsurveyed T. 5 S., R. 43 E., Mount Diablo Meridian, Nevada, executed by Donald R. Beck, Cadastral Surveyor, June 1 - 2, 1971, under Special Instructions dated May 27, 1971, for Group No. 481, Nevada.

UNITED STATES DEPARTMENT OF THE INTERIOR
BUREAU OF LAND MANAGEMENT
Washington, D. C. July 29, 1971

This plat is strictly conformable to the approved field notes, and the survey, having been correctly executed in accordance with the requirements of law and the regulations of this Bureau, is hereby accepted.

For the Director

Clark I. Lumm

Chief, Division of Cadastral Survey