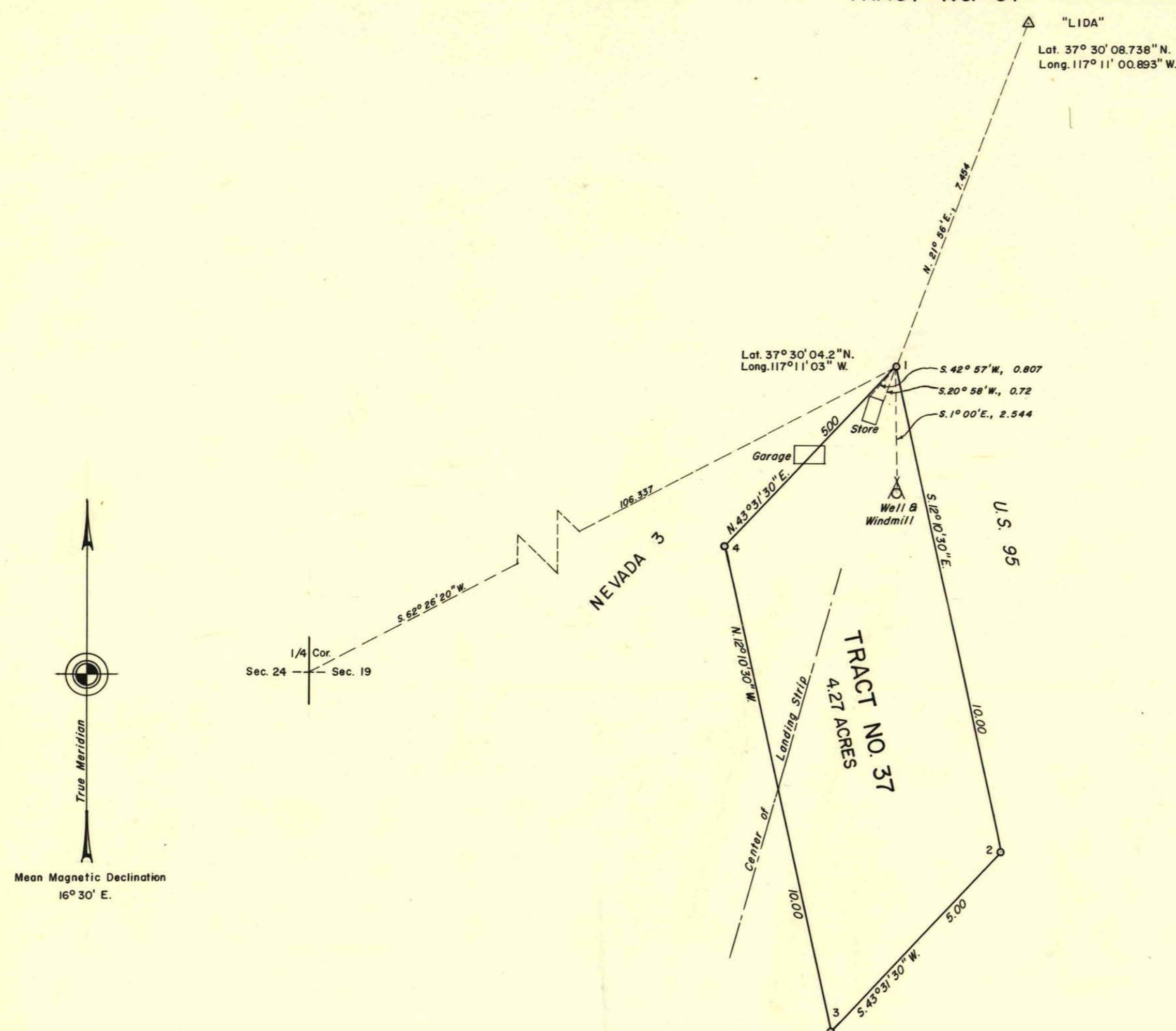


## TOWNSHIP 5 SOUTH, RANGE 43 EAST, OF THE MOUNT DIABLO MERIDIAN, NEVADA, (UNSURVEYED)

TRACT NO. 37



Tract 37 in unsurveyed T. 5 S., R. 43 E., Mount Diablo Meridian, Nevada, surveyed by Horace G. Parker, Cadastral Surveyor, November 6-7, 1961, under special instructions dated October 27, 1961.

UNITED STATES DEPARTMENT OF THE INTERIOR  
BUREAU OF LAND MANAGEMENT  
Washington, D.C. April 16, 1962

This plat is strictly conformable to the approved field notes, and the survey, having been correctly executed in accordance with the requirements of law and the regulations of this Bureau, is hereby accepted.

For the Director

*Ed Pennington*

Chief, Division of Engineering

0 1 2 3 4 5  
Scale in Chains

1519-B

TRACT 37 - T5S, R43E