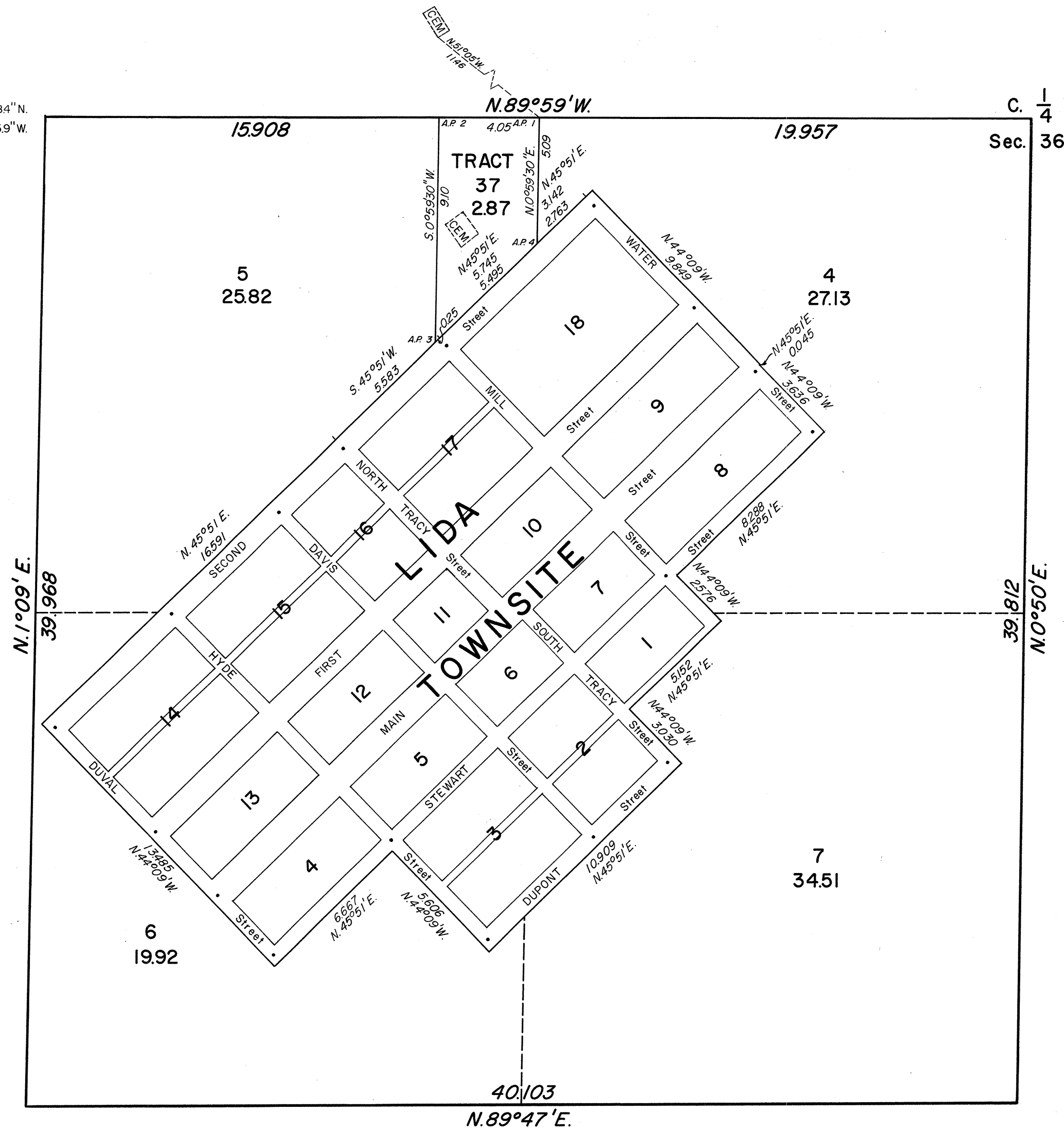
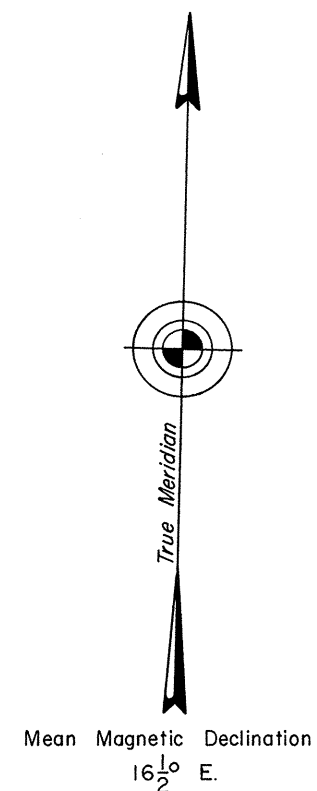


TOWNSHIP 5 SOUTH, RANGE 40 EAST, OF THE MOUNT DIABLO MERIDIAN, NEVADA

SW  $\frac{1}{4}$  OF SEC. 36  
SURVEY OF TRACT 37

Latitude 37°27'38.4"N.  
Longitude 117°30'05.9"W.



C.  $\frac{1}{4}$   
Sec. 36

History of the earlier surveys is contained in the field notes.

This plat represents the establishment of the CW 1/16 section corner of section 36, and, the survey of Tract 37 in the SW  $\frac{1}{4}$  of section 36, T. 5 S., R. 40 E.

Lotting and areas (except as indicated hereon), are as shown on the plats approved January 28, 1883, December 7, 1917, and January 30, 1920.

The survey was executed by Lancel E. Bland, Cadastral Surveyor, on May 21, 1968, under Special Instructions dated May 1, 1968, for Group No. 460, Nevada.

UNITED STATES DEPARTMENT OF THE INTERIOR  
BUREAU OF LAND MANAGEMENT  
Washington, D. C. January 15, 1969

This plat is strictly conformable to the approved field notes, and the survey, having been correctly executed in accordance with the requirements of law and the regulations of this Bureau, is hereby accepted.

For the Director

*R. E. Brown*

Chief, Division of Engineering

OFFICIALLY FILED  
NEVADA LAND OFFICE  
10:00 AM 2/19/1969

T52 P40E