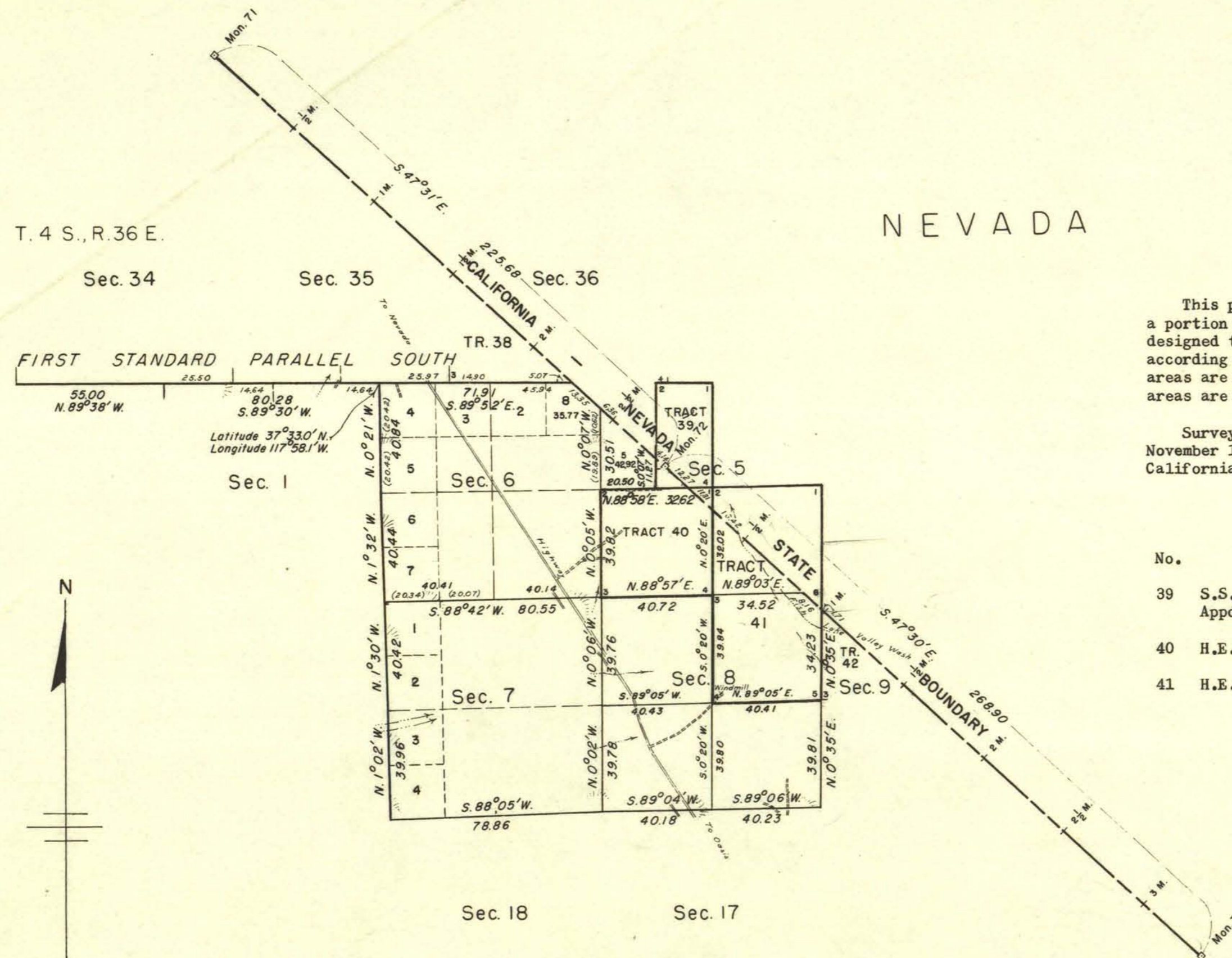


TOWNSHIP 5 SOUTH, RANGE 37 EAST, OF THE MOUNT DIABLO MERIDIAN, CALIFORNIA.

DEPENDENT RESURVEY



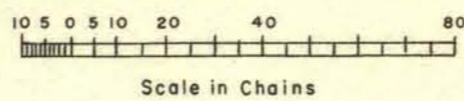
This plat represents a retracement and reestablishment of a portion of the township boundaries and subdivisional lines designed to restore all corners in their original locations according to the best available evidence. The lottings and areas are shown on the prior approved plats, except where new areas are shown hereon.

Survey executed by Roger F. Wilson, from October 28 to November 10, 1953, under special instructions for Group 267, California, dated March 3, 1931.

INDEX TO SEGREGATED TRACTS

No.	Entry	Original Subdivision	Sec.
39	S.S. List 122 Appd. 4-26-1923	SE $\frac{1}{4}$ NW $\frac{1}{4}$ & Lot 3	5
40	H.E. 02307	SW $\frac{1}{4}$	5
41	H.E. 01742	SE $\frac{1}{4}$ NE $\frac{1}{4}$	5 8

Surveyed by N. L. Berdan in 1880.



Area resurveyed: 1801.52 acres
 Area of segregated tracts: 559.44 acres
 Total: 2360.96 acres

Mean
Magnetic
Declination
16° East

UNITED STATES DEPARTMENT OF THE INTERIOR
 BUREAU OF LAND MANAGEMENT
 Washington, D. C. April 14, 1955

This plat is strictly conformable to the approved field notes, and the survey, having been correctly executed in accordance with the requirements of law and the regulations of this Bureau, is hereby accepted.

For the Director

Carl S. Harrington
 Cadastral Engineering Staff Officer

Cal-1159-C

T5S, R37E. (Calif)