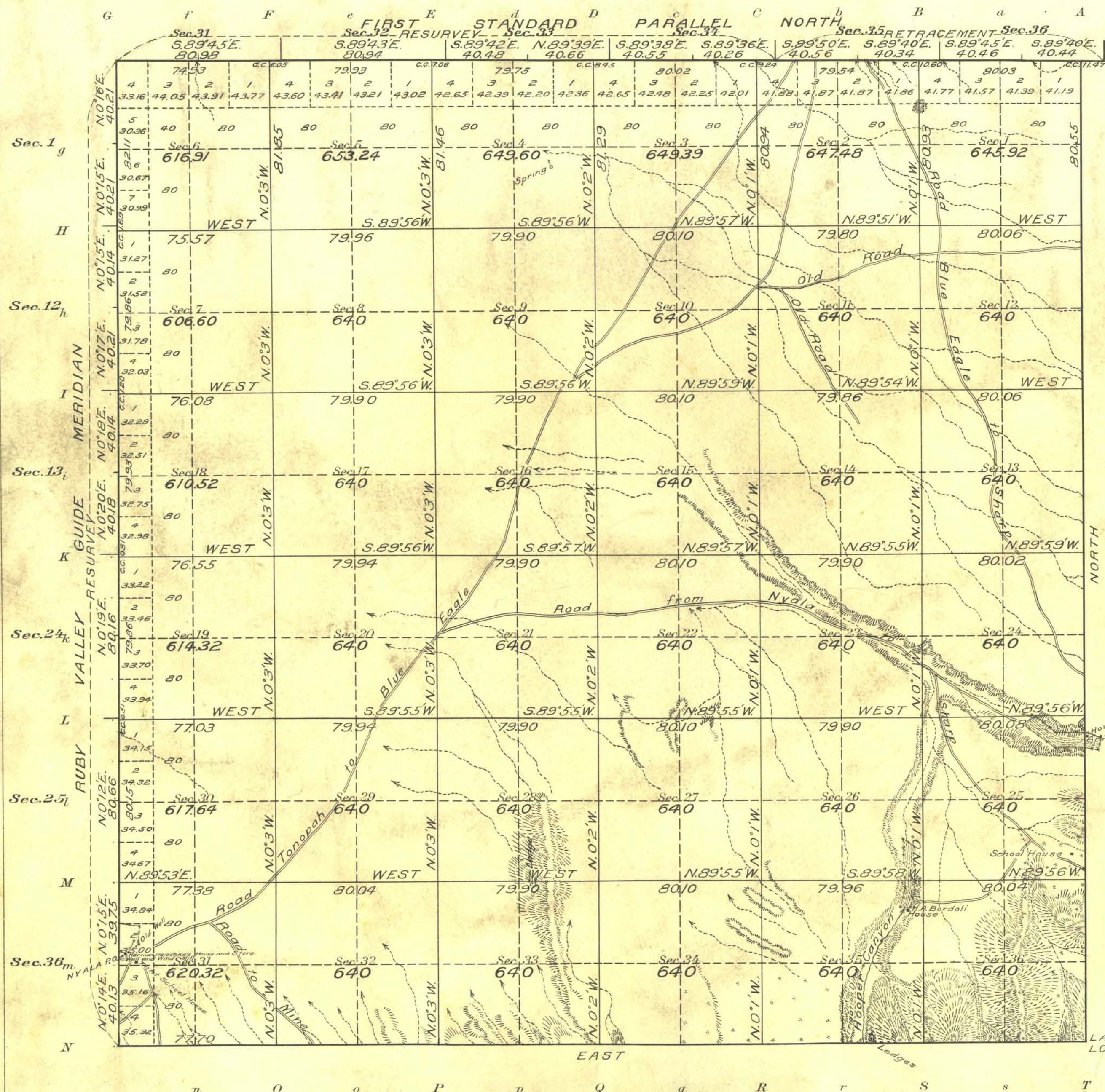


Survey accepted Jan. 29, 1918.
G.L.O.

Township No. 5 North, Range No. 56 East of the Mt. Diablo Meridian, Nevada.



| Areas in Acres | |
|--------------------|------------------|
| Public Land | 22,931.94 |
| Indian Reservation | |
| Indian Allotments | |
| Mineral Claims | |
| Water Surface | |
| Total Area | 22,931.94 |

LATITUDE, 39° 14' N
LONGITUDE, 115° 37' W
Scale 40 Chains to an inch
Mean Magnetic Declination, 17° 30' E.

| Surveys Designated | By Whom Surveyed | Group | | | When Surveyed | | | |
|------------------------|-------------------|-------|----------------------|------|---------------|------|-----------------|---------------|
| | | No. | Date of Instructions | Mls. | chs. | lks. | Begun | Completed |
| 1st. St. Par. N. Res. | Edward R. Bunbury | 41 | March 30, 1916 | 4 | 3 | 87 | | |
| 1st. St. Par. N. Retr. | " " " | " | " " " " | 2 | 1 | 80 | | |
| Ruby Valley G.M. Res. | " " " | " | " " " " | 6 | 1 | 79 | August 15, 1916 | Sept 12, 1916 |
| South Boundary | " " " | " | " " " " | 5 | 77 | 70 | | |
| East Boundary | " " " | " | " " " " | 6 | 00 | 55 | | |
| Subdivisions | " " " | " | " " " " | 59 | 68 | 54 | | |

The above map of Township No. 5 North, Range No. 56 East of the Mt. Diablo Meridian Nevada is strictly conformable to the field notes of the survey thereof on file in this office, which have been examined and approved

U. S. Surveyor General's Office,
Reno, Nevada, June 21, 1917

John B. Sullivan
Surveyor General.