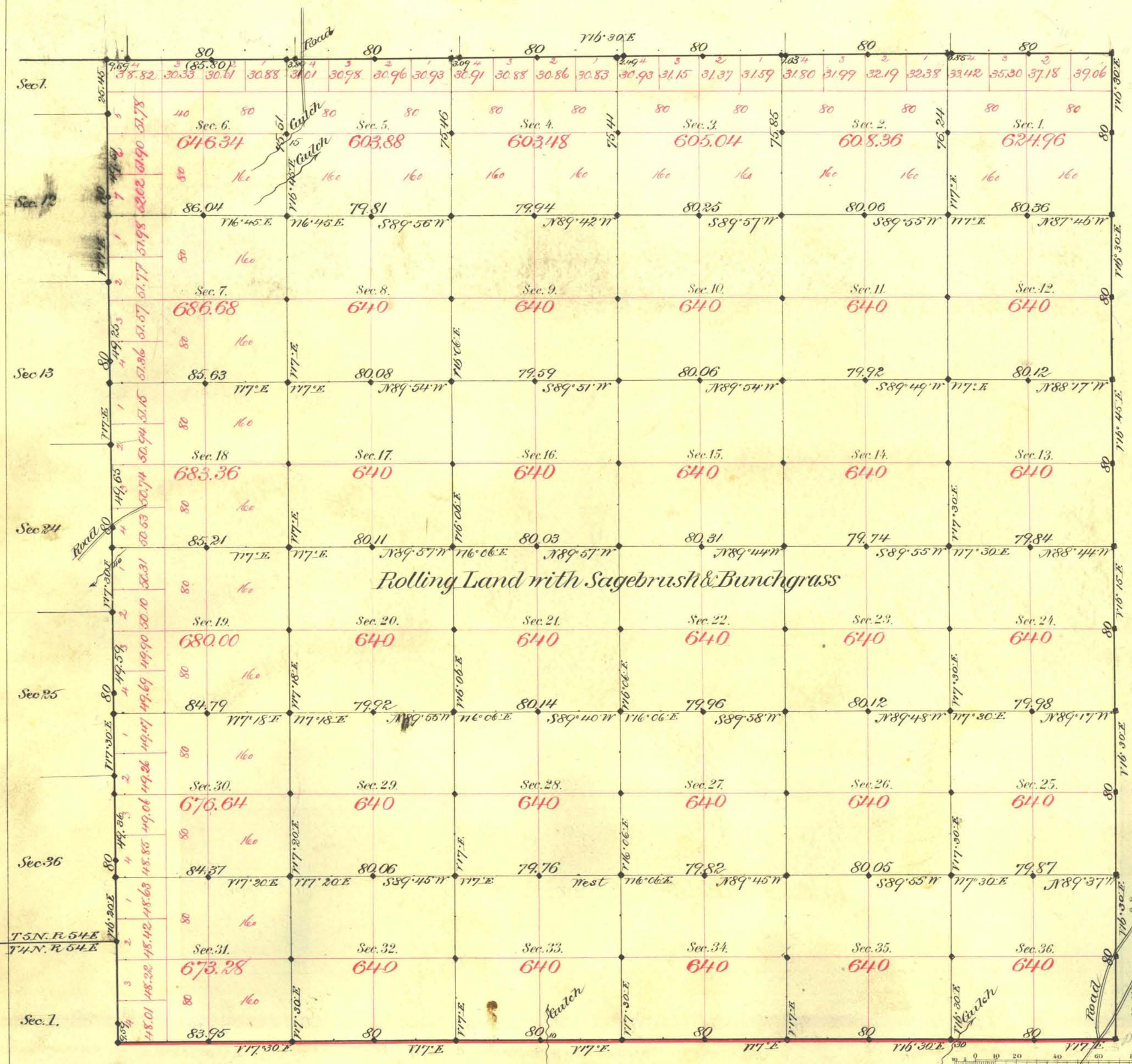


TOWNSHIP N^o 5 NORTH RANGE N^o 55 EAST MOUNT DIABLO MERIDIAN



Aggregate Area of Public Land Surveyed 23,092.02 Acres.

Rolling Land with Sagebrush & Bunchgrass

Commenced July 20th 1881
Completed Aug. 24th "

Subdivisions not otherwise noted drawn with a Var. of 16' East.

Survey Designated	By Whom Surveyed	Date of Contract	Amount of Survey	When Surveyed
Co. ldy.	C. D. Thomas	Oct. 1 st 1869	5-00-00	1869 31
"	Banker & Thomas	Aug. 9 th 1875	6-00-00	1875 69
"	Woolly & Abner	April 27 th 1881	5-74-96	1881 126
Subdivisions	"	"	6-03-95	" " "
Conveyance	"	"	11-95	" " "
Corner & N. ldy.	"	"	3-07-36	" " "

The above Map of Township N^o 5 North of Range N^o 55 East -
Mount Diablo Meridian - is strictly conformable to the field
notes of the survey thereof on file in this Office, which have been examined and approved.
Surveyor General's Office. } C. S. Davis
Deur. Nevada } Sur. Gen.
April 1st 1882