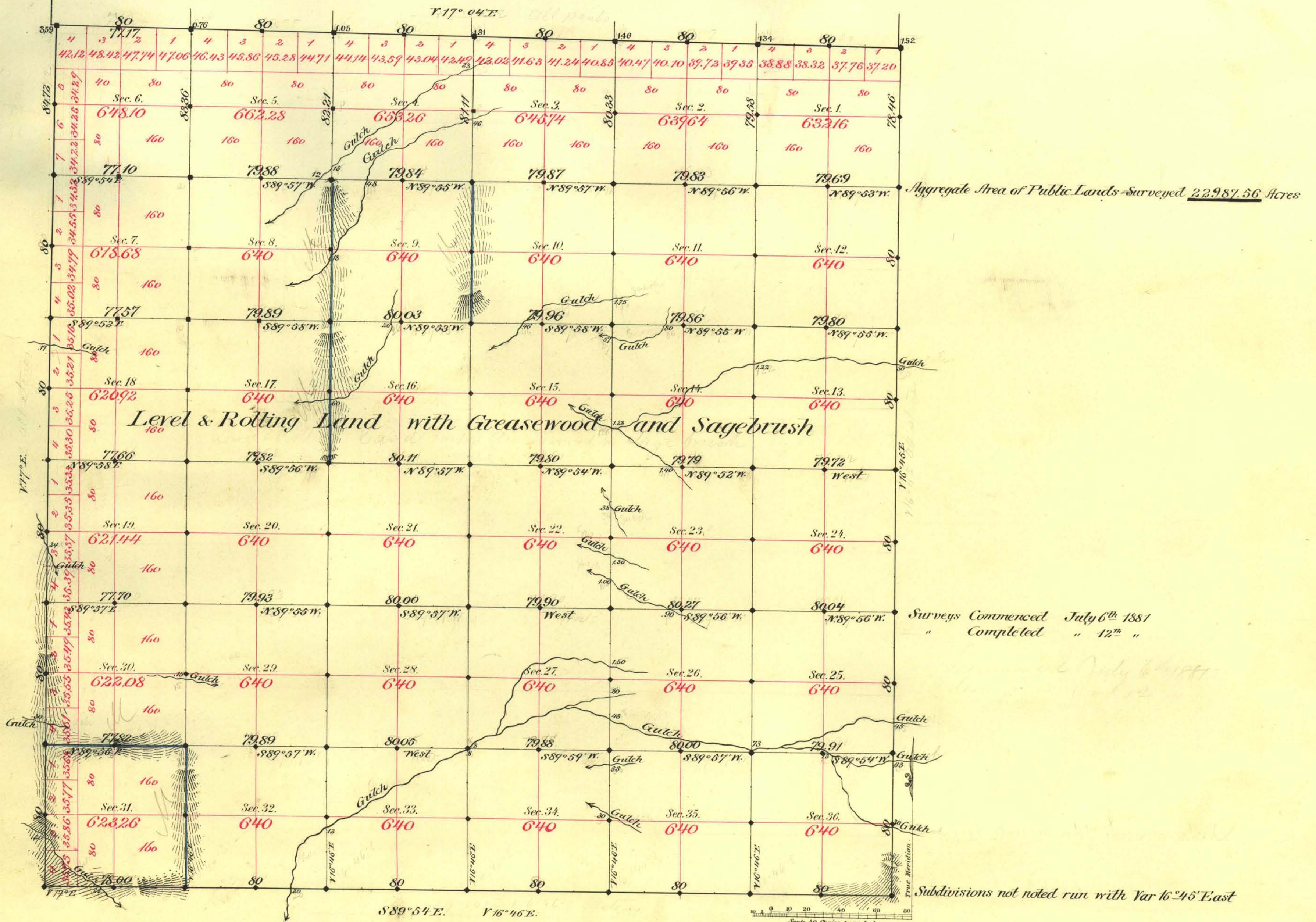


TOWNSHIP N^o 5 NORTH RANGE N^o 44 EAST MOUNT DIABLO MERIDIAN



Aggregate Area of Public Lands Surveyed 22,987.56 Acres

Level & Rolling Land with Greasewood and Sagebrush

Surveys Commenced July 6th 1881
Completed " 12th "

Subdivisions not noted run with Var 16° 45' East

Surveys Designated	By Whom Surveyed	Date of Contract	Amount of Surveys	When Surveyed
N. Boundary	C. C. Tracey	July 16 th 1867	26 80 50	1867
E. W. & S. "	Glover & Ferrin	April 15 th 1881	18 01 18	1881
Subdivisions 468	" " "	" " "	54 74 38	" "
Blue 10	" " "	" " "	4 77 82	July "
Convergency	" " "	" " "	5 92	" "

770 Cor.
9
122

The above Map of Township N. 5 North of Range N. 44 East
Mt. Diablo Meridian is strictly conformable to the field
notes of the survey thereof on file in this Office, which have been examined and approved.
Surveyor General's Office }
Virginia City Nevada }
November 7th 1881 }
C. A. Davis }
Sur. Gen. Nev.