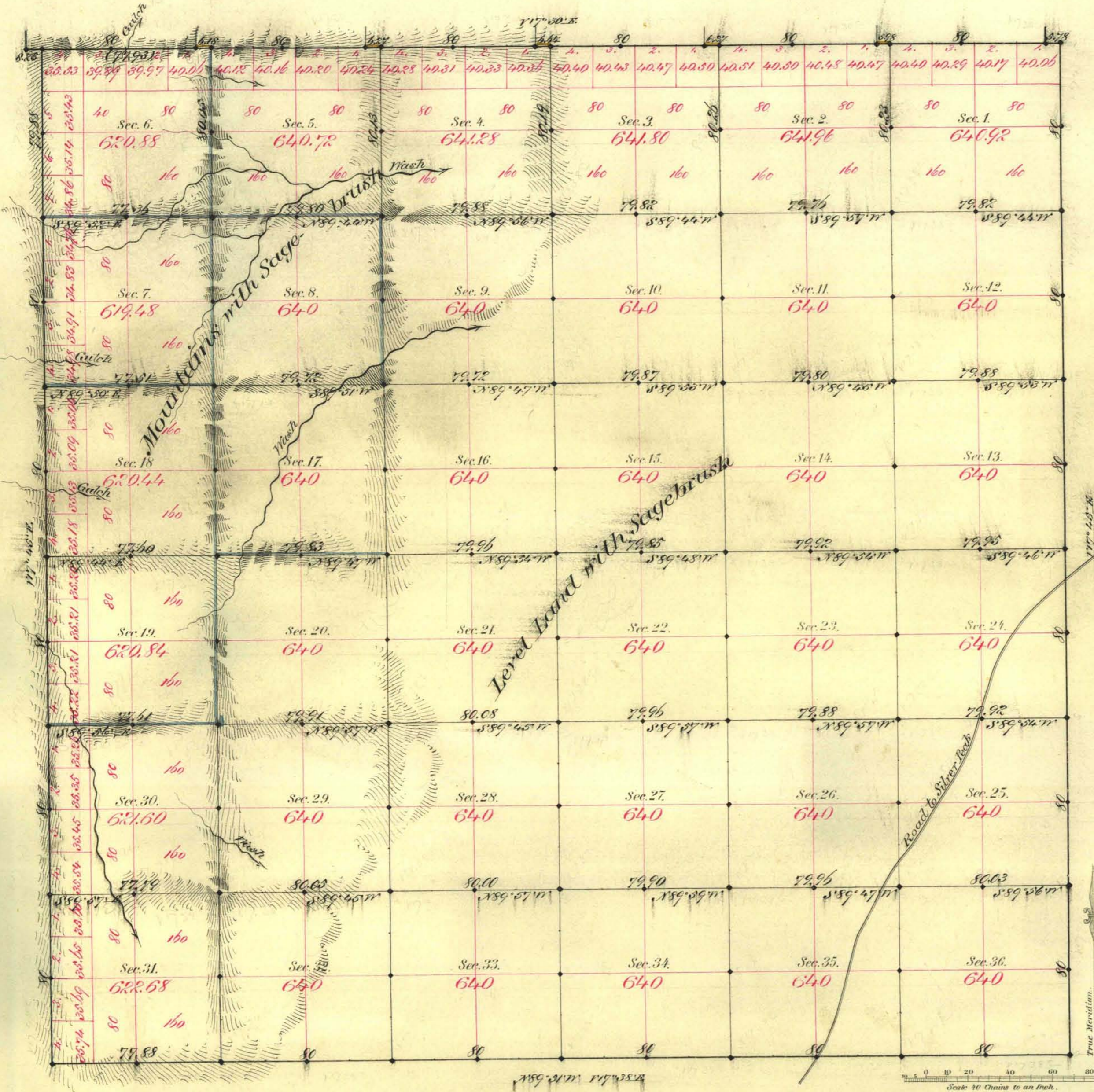


TOWNSHIP N^o 5 NORTH RANGE N^o 40 EAST MOUNT DIABLO MERIDIAN



Aggregate Area of Public Land Surveyed 22,932.59 Ac.

Commenced February 24th 1881
Completed March 13rd "

Subdivisions run with a Variation of 17' 38" East

Surveys Designated	By Whom Surveyed	Date of Contract	Amount of Surveys	When Surveyed	70 ^o Cor.
N. 1 st Div.	Blair + Paine	March 15 th 1880	5 th - 6 th - 7 th	1880	102
C. 11 + 12 Div.	Reilly + Hoage	Dec. 21 st "	17 - 27 - 28	1881	103
Subdivisions (Blue 10)	"	"	9 - 12 - 16	Feb + March "	"
" (Black 5)	"	"	19 - 23 - 24	"	"
Dom agency (yellow)	"	"	31 - 34	"	"

The above Map of Township N^o 5 North of Range N^o 40 East Mt Diablo Meridian is strictly conformable to the field notes of the survey thereof on file in this Office, which have been examined and approved.

Surveyor General's Office }
Virginia City Nev. }
March 25th 1881 }
C. S. Davis }
Sur. Gen. Sec. }