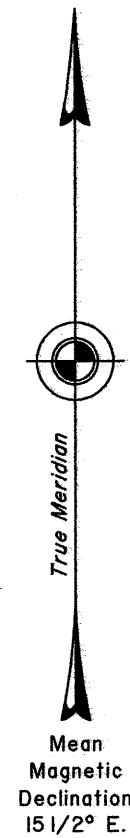
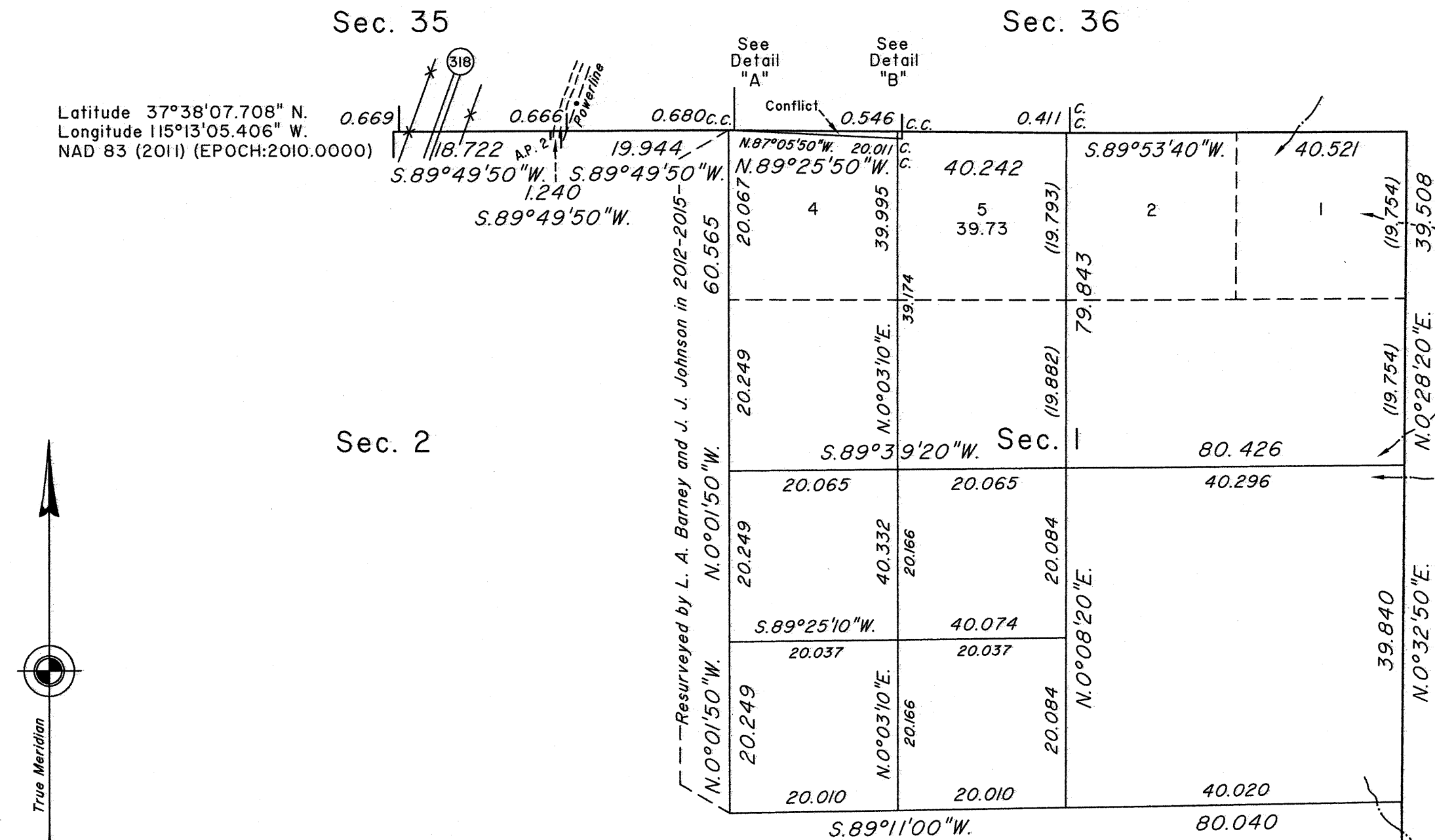
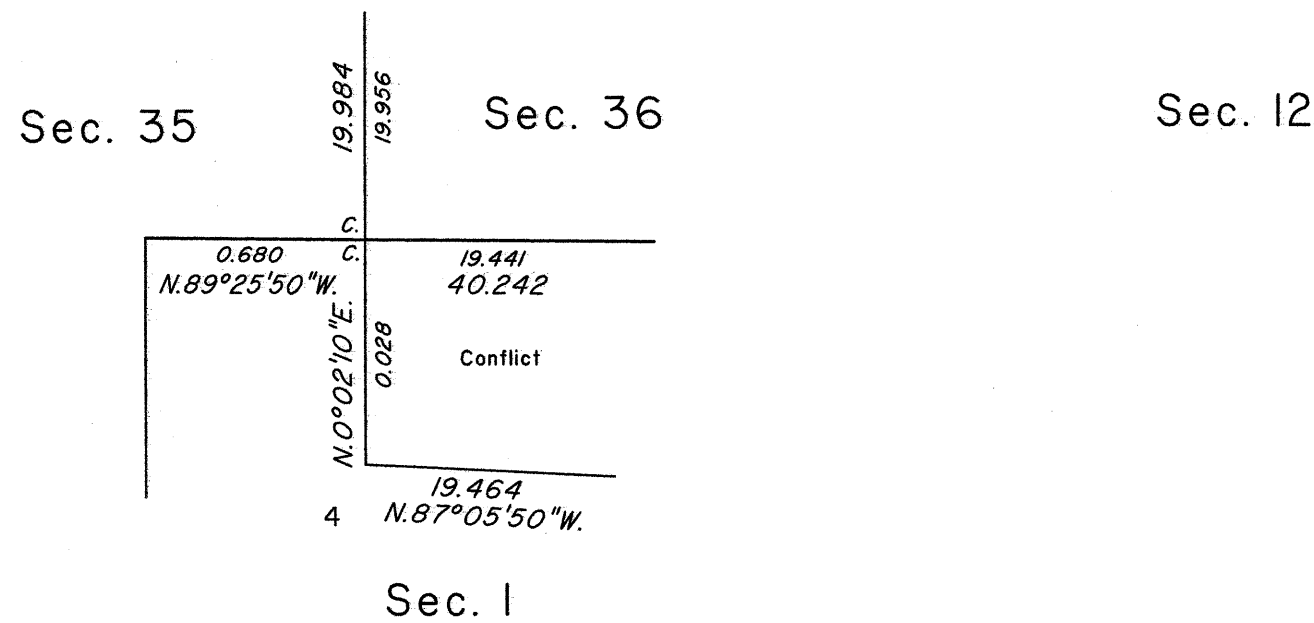


TOWNSHIP 4 SOUTH, RANGE 60 EAST, OF THE MOUNT DIABLO MERIDIAN, NEVADA

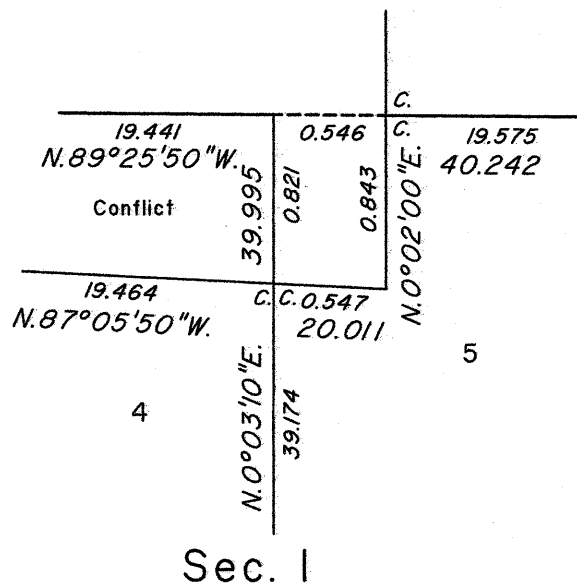
DEPENDENT RESURVEY AND SUBDIVISION



DETAIL "A"
Not to Scale



DETAIL "B"
Not to Scale
Sec. 36



A history of surveys is contained in the field notes.

A portion of the south boundary of Township 3 South, Range 60 East, was dependently resurveyed concurrently under this same Group.

This plat represents the dependent resurvey of a portion of the east boundary, a portion of the north boundary and a portion of the subdivisional lines designed to restore the corners in their true original locations according to the best available evidence, and the subdivision of section 1, Township 4 South, Range 60 East, Mount Diablo Meridian, Nevada.

Except as indicated hereon, the lottings and areas are as shown on the plat approved October 20, 1870.

Survey executed by Joseph J. Johnson, Cadastral Surveyor, beginning January 2, 2014 and completed May 26, 2015, pursuant to Special Instructions dated December 18, 2013, and Supplemental Special Instructions dated May 22, 2015, for Group No. 929, Nevada.

UNITED STATES DEPARTMENT OF THE INTERIOR
BUREAU OF LAND MANAGEMENT

Reno, Nevada June 2, 2015

This plat is strictly conformable to the approved field notes, and the survey, having been correctly executed in accordance with the requirements of law and the regulations of this Bureau, is hereby accepted.

For the Director

Michael O. Hummer

Chief Cadastral Surveyor for Nevada

Latitude 37°36'21.848" N.
Longitude 115°11'27.132" W.
NAD 83 (2011) (EPOCH:2010.0000)

