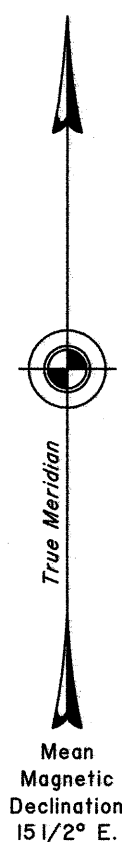


# TOWNSHIP 4 SOUTH, RANGE 60 EAST, OF THE MOUNT DIABLO MERIDIAN, NEVADA

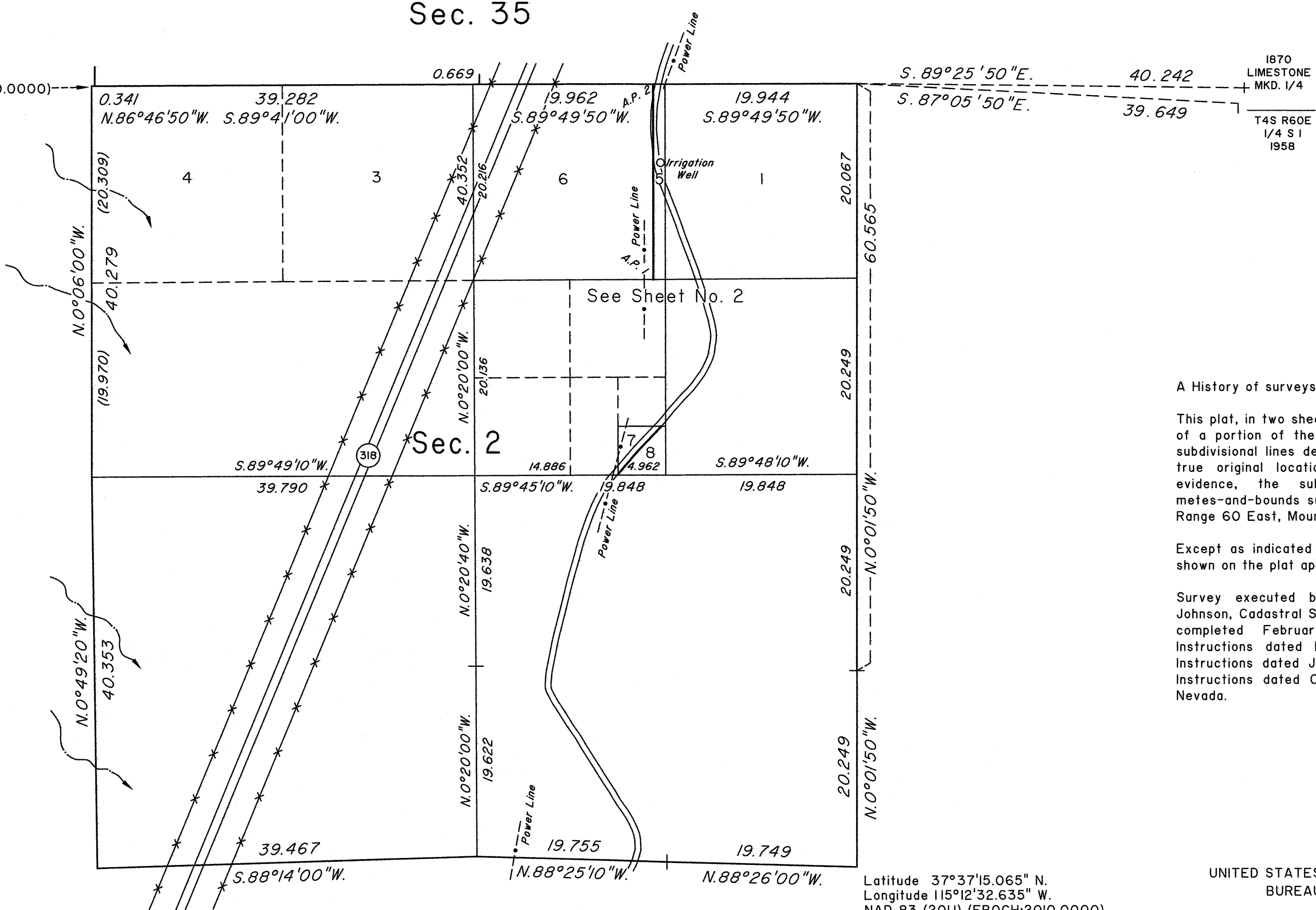
## DEPENDENT RESURVEY, SUBDIVISION AND METES-AND-BOUNDS SURVEYS

OFFICIALLY FILED  
NEVADA STATE OFFICE  
at 10:00 AM on  
APR 17 2015

Latitude 37°38'07.579" N.  
Longitude 115°13'37.909" W.  
NAD 83 (2011) (EPOCH:2010.0000)



### Sec. 35



1870  
LIMESTONE  
MKD. 1/4  
T4S R60E  
1/4 S 1  
1958

A History of surveys is contained in the field notes.

This plat, in two sheets, represents the dependent resurvey of a portion of the north boundary and a portion of the subdivisional lines designed to restore the corners in their true original locations according to the best available evidence, the subdivision of section 2 and the metes-and-bounds surveys in section 2, Township 4 South, Range 60 East, Mount Diablo Meridian, Nevada.

Except as indicated hereon, the lottings and areas are as shown on the plat approved October 20, 1870.

Survey executed by Lance A. Barney and Joseph J. Johnson, Cadastral Surveyors, beginning March 15, 2012, and completed February 2, 2015, pursuant to Special Instructions dated March 7, 2012, Supplemental Special Instructions dated June 4, 2012 and Supplemental Special Instructions dated October 24, 2013, for Group No. 914, Nevada.

Latitude 37°37'15.065" N.  
Longitude 115°12'32.635" W.  
NAD 83 (2011) (EPOCH:2010.0000)

UNITED STATES DEPARTMENT OF THE INTERIOR  
BUREAU OF LAND MANAGEMENT

Reno, Nevada April 16, 2015

This plat is strictly conformable to the approved field notes, and the survey, having been correctly executed in accordance with the requirements of law and the regulations of this Bureau, is hereby accepted.

For the Director

Chief Cadastral Surveyor for Nevada

