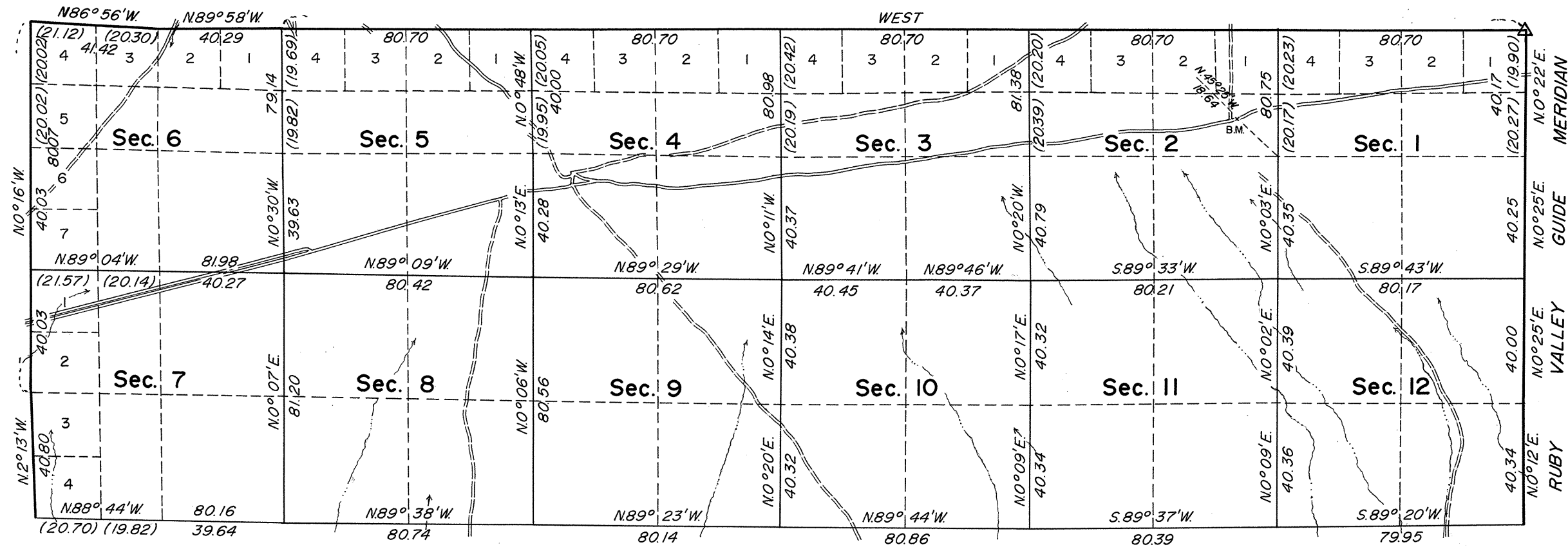


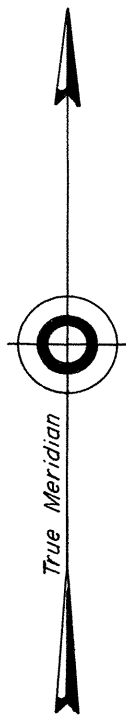
TOWNSHIP 4 SOUTH, RANGE 55 EAST, OF THE MOUNT DIABLO MERIDIAN, NEVADA

DEPENDENT RESURVEY



"Ruby"
Nevada Planning Division
Lat. 37°38'06.905"N.
Long. 115°43'56.938"W.

Lat. 37°36'22.0"N.
Long. 115°43'57.7"W.



Mean Magnetic Declination
16 1/2° E.

Sec. 18 Sec. 17 Sec. 16 Sec. 15 Sec. 14 Sec. 13

Surveyed

by

Reilly & Magee

in 1881

History of earlier surveys is contained in the field notes.

This plat represents a dependent resurvey of the north boundary, portions of the east and west boundaries, and a portion of the subdivisional lines of T. 4 S., R. 55 E., Mount Diablo Meridian, Nevada, designed to restore the corners in their original locations according to the best available evidence. Lottings and areas are as shown on the plat approved July 30, 1881.

Surveys executed by Eldon W. Sibley, Cadastral Surveyor, April 20 to April 29, 1964, under Special Instructions dated March 27, 1963, for Group No. 410, Nevada.

UNITED STATES DEPARTMENT OF THE INTERIOR
BUREAU OF LAND MANAGEMENT
Washington, D. C. June 16, 1965

This plat is strictly conformable to the approved field notes, and the survey, having been correctly executed in accordance with the requirements of law and the regulations of this Bureau, is hereby accepted.

For the Director

Clark J. Lumm

Acting Chief, Division of Engineering



Scale in Chains
Area Resurveyed: 7,706.34 Acres

2268-A.

T4S, R55E.