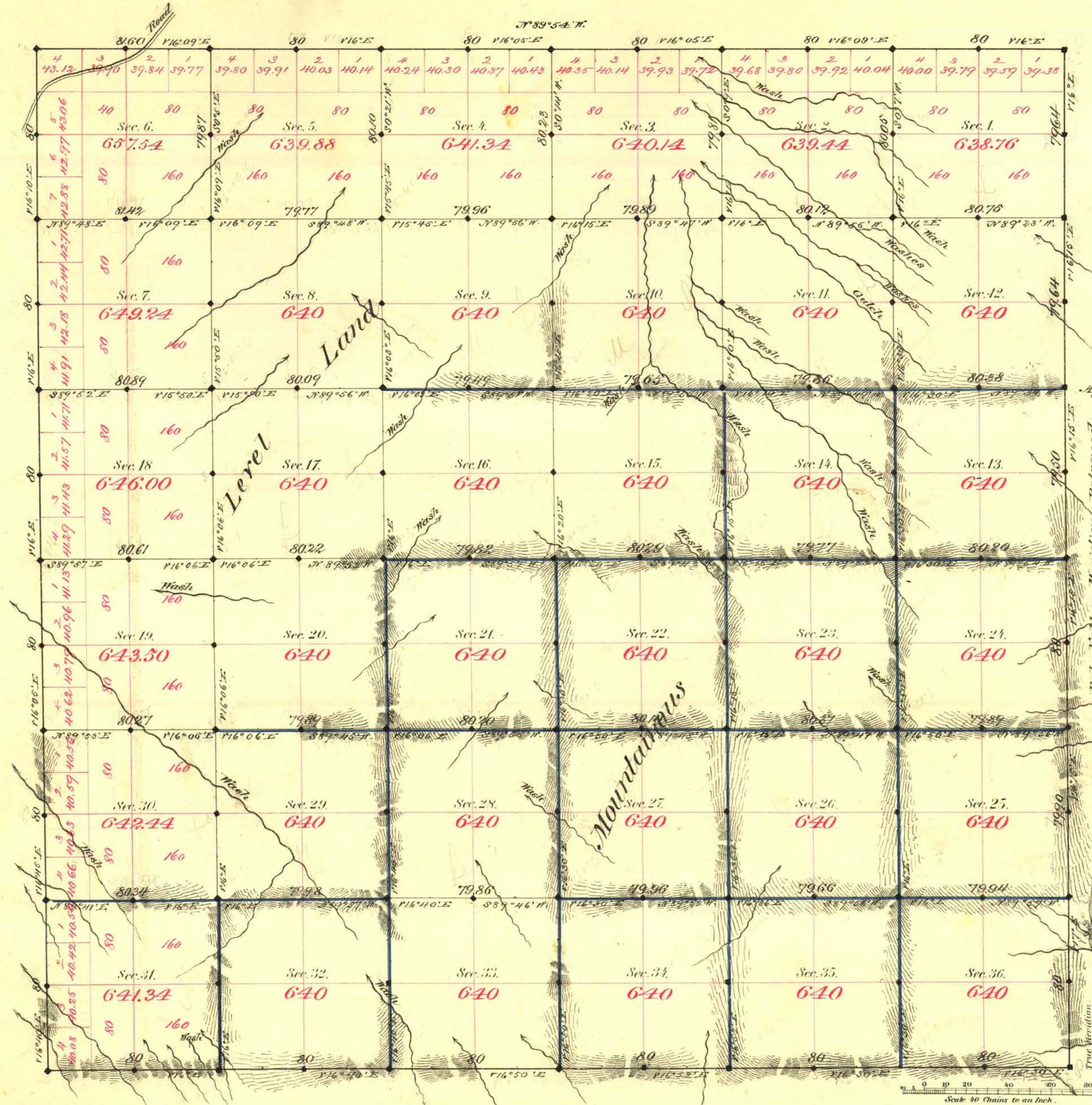


TOWNSHIP N^o 4 SOUTH RANGE N^o 55 EAST MOUNT DIABLO MERIDIAN



Aggregate Area of Public Land surveyed 23073.62 Acres

Moby Valley Meridian retraced.

Commenced May 26th 1881
Completed June 1st "

Survey Designated	By Whom Surveyed	Date of Contract	Amount of Surveys	When Surveyed
Co. 10	Momel	Oct 14 1869	26 - 00 - 00	1869
" "	Buller & Hoag	Feb. 23 rd 1881	24 - 00 - 28	1881
" "	" "	" "	27 - 03 - 91	about June "
" "	" "	" "	32 - 29 - 79	" "

7th Con
31
117
"

The above Map of Township N. 4 South of Range N. 55 East Mt. Diablo Meridian is strictly conformable to the field notes of the survey thereof on file in this Office, which have been examined and approved.

Surveyor General's Office,
Virginia City, Nevada
July 30th 1881

D. S. Davis
Sur. Gen. Nev.