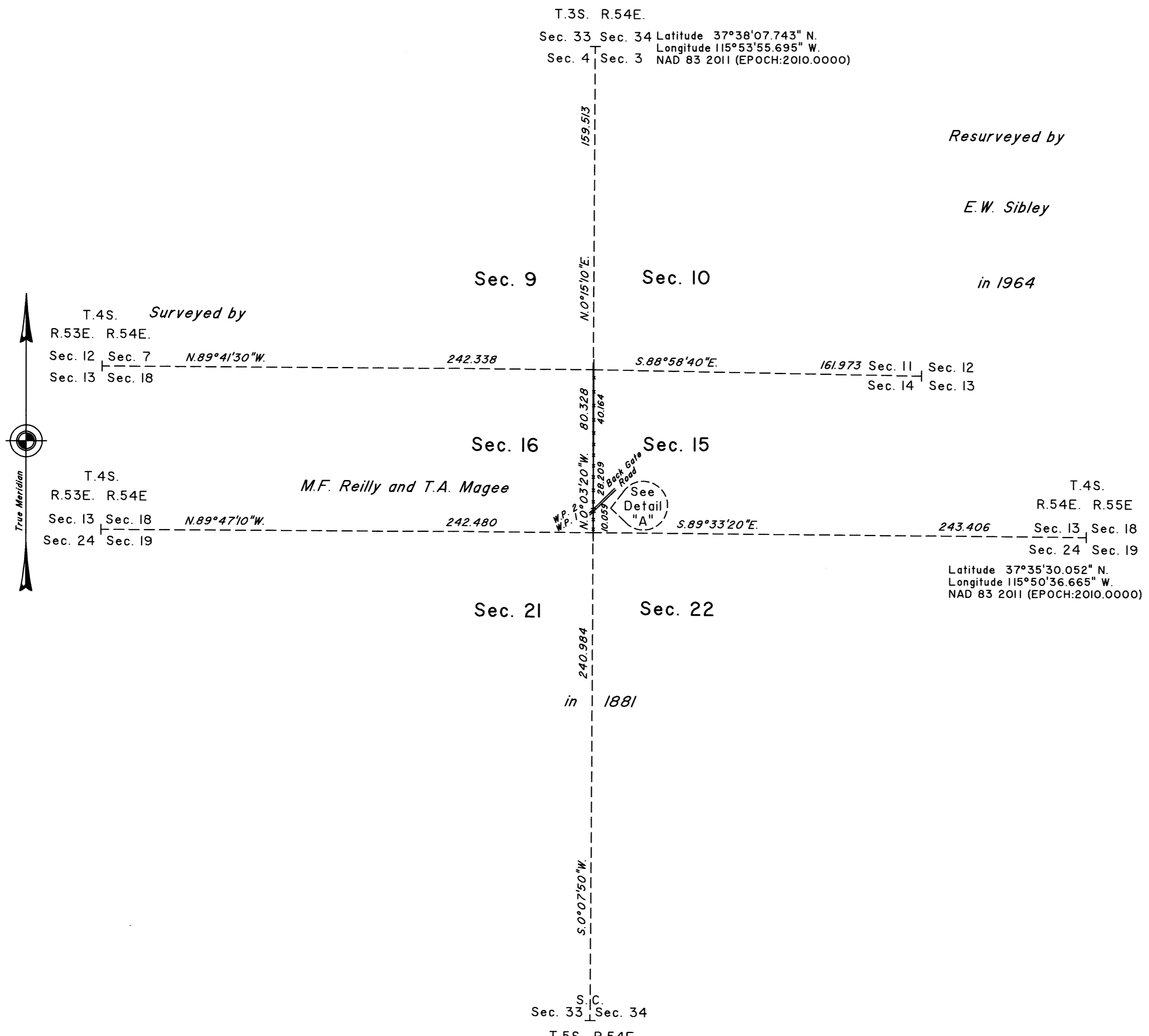
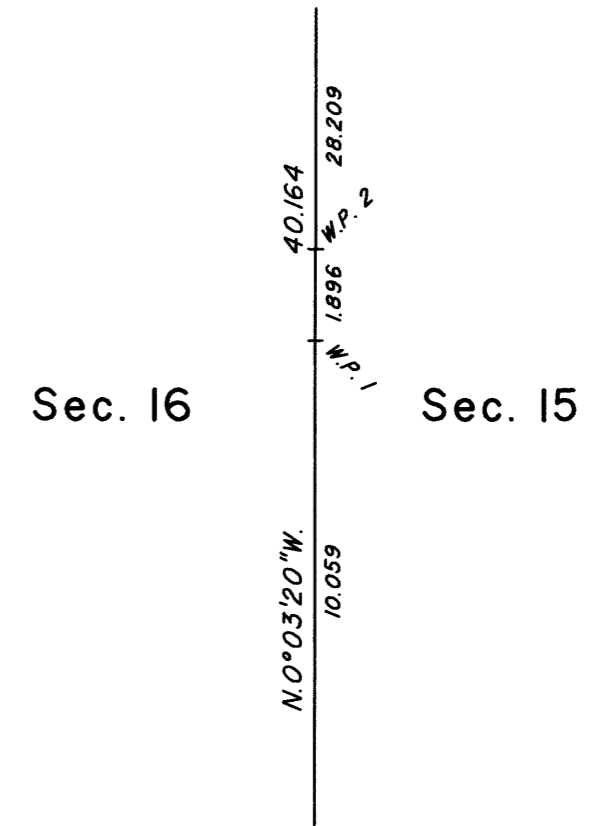


TOWNSHIP 4 SOUTH, RANGE 54 EAST, OF THE MOUNT DIABLO MERIDIAN, NEVADA
DEPENDENT RESURVEY



Detail "A"
Not to Scale



A history of surveys is contained in the field notes.

This plat represents the dependent resurvey of a portion of the subdivisional lines, designed to restore the corners in their true original locations according to the best available evidence, Township 4 South, Range 54 East, Mount Diablo Meridian, Nevada.

Except as indicated hereon, the lottings and areas are as shown on the plat approved July 30, 1881.

Survey executed by Matthew E. Campos and Stephen J. Grimaldi, Cadastral Surveyors, beginning July 24, 2018 and completed March 7, 2019, pursuant to Special Instructions dated July 20, 2018, for Group No. 988, Nevada.

UNITED STATES DEPARTMENT OF THE INTERIOR
BUREAU OF LAND MANAGEMENT
Reno, Nevada July 21, 2020

This plat is strictly conformable to the approved field notes, and the survey, having been correctly executed in accordance with the requirements of law and the regulations of this Bureau, is hereby accepted.

For the Director

Chief Cadastral Surveyor for Nevada