

ORIGINAL

OFFICIALLY FILED  
NEVADA STATE OFFICE  
10:00 a.m., June 18, 1978

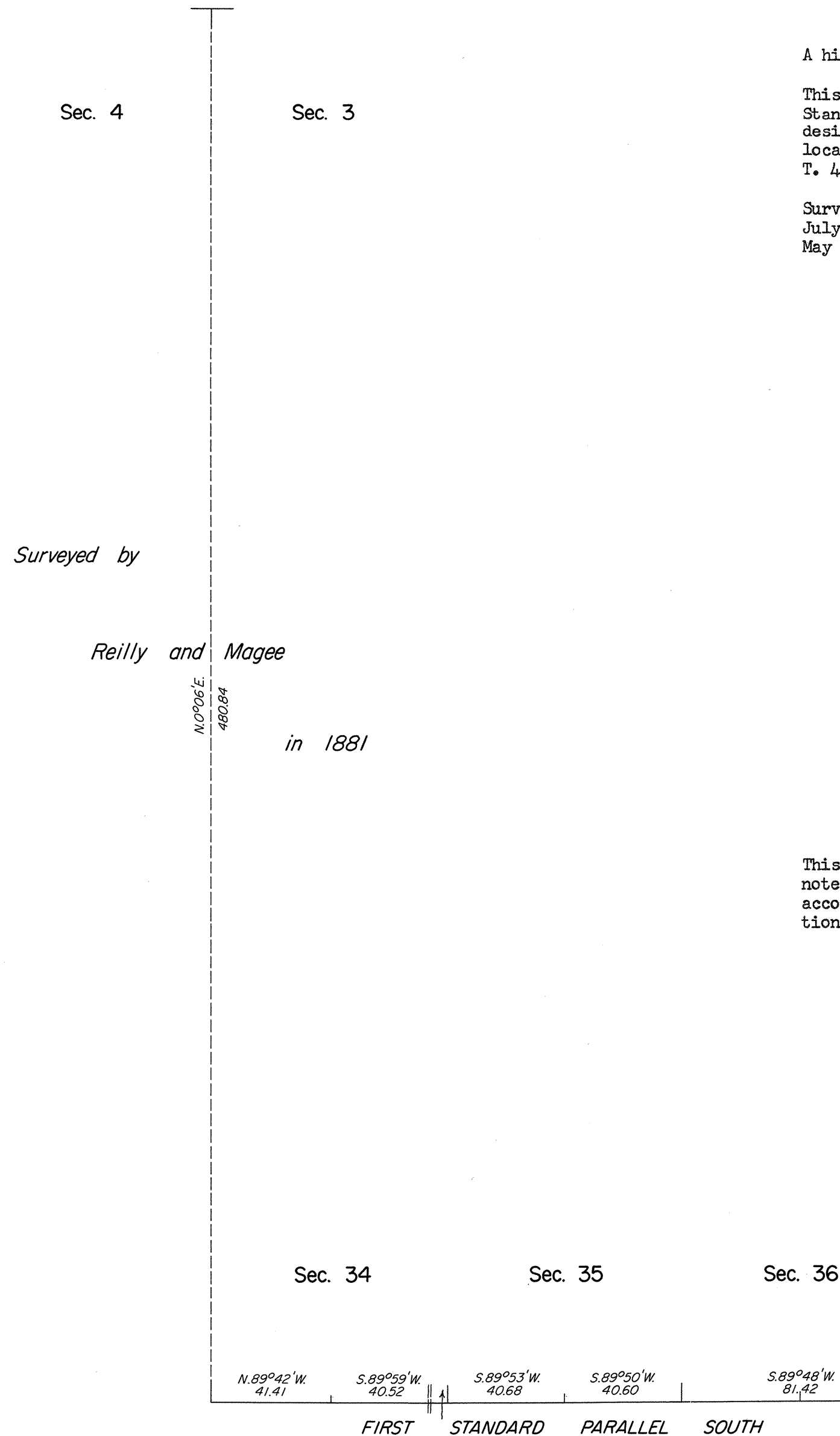
# TOWNSHIP 4 SOUTH, RANGE 54 EAST, OF THE MOUNT DIABLO MERIDIAN, NEVADA

## DEPENDENT RESURVEY

A history of surveys is contained in the field notes.

This plat represents a dependent resurvey of the First Standard Parallel South, through a portion of R. 54 E., designed to restore the corners in their true original locations according to the best available evidence of T. 4 S., R. 54 E., Mount Diablo Meridian, Nevada.

Survey executed by Robert A. Pratt, Cadastral Surveyor, July 8 to July 15, 1977, under Special Instructions dated May 25, 1977, for Group No. 548, Nevada.



Surveyed by  
*Reilly and Magee*  
in 1881

UNITED STATES DEPARTMENT OF THE INTERIOR  
BUREAU OF LAND MANAGEMENT  
Washington, D. C. May 17, 1978

This plat is strictly conformable to the approved field notes, and the survey, having been correctly executed in accordance with the requirements of law and the regulations of this Bureau, is hereby accepted.

For the Director

*Bernard W. Falgout*  
Chief, Division of Cadastral Survey

