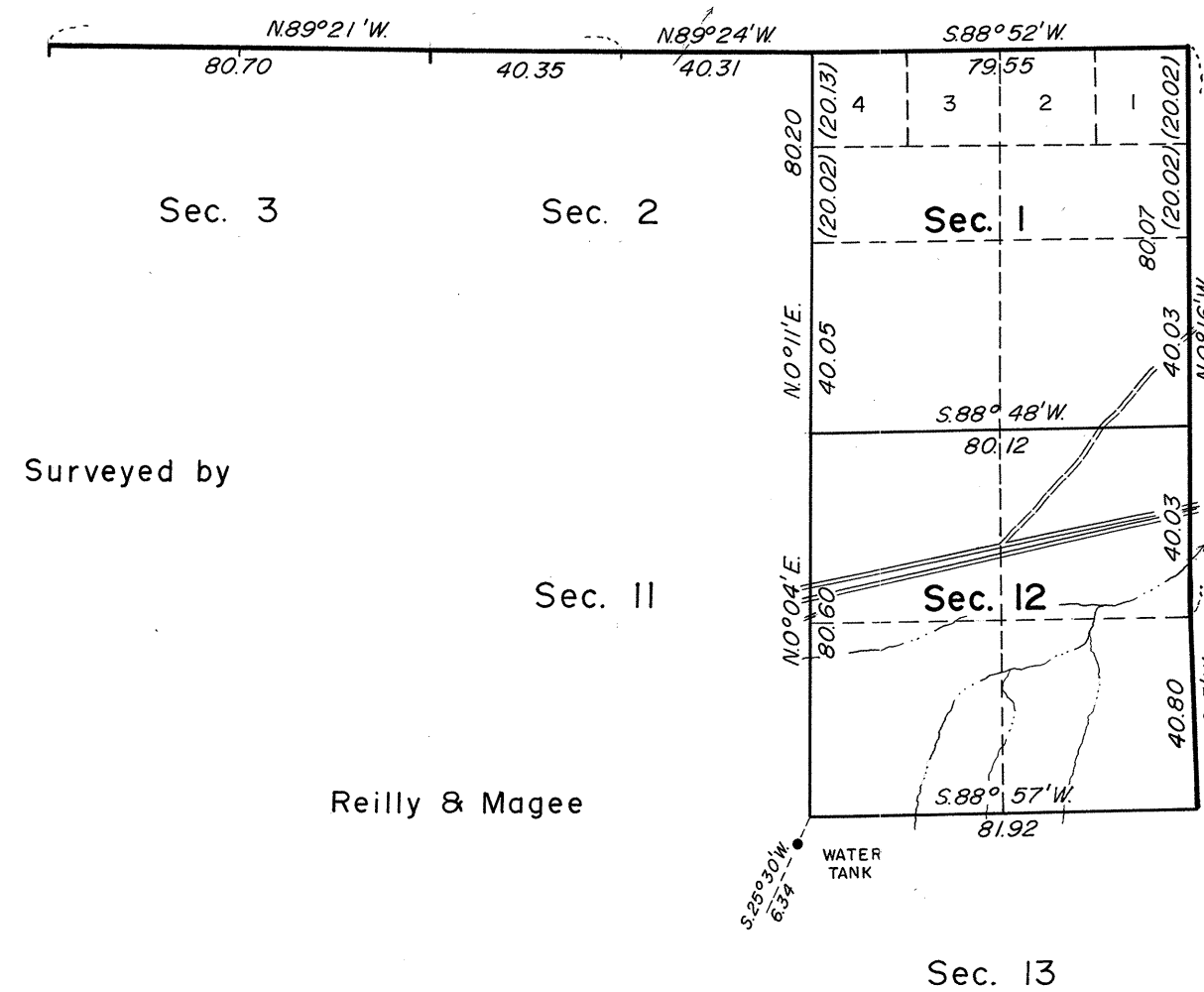


OFFICIALLY FILED
NEVADA STATE OFFICE
1000 a.m. July 6, 1965

TOWNSHIP 4 SOUTH, RANGE 54 EAST, OF THE MOUNT DIABLO MERIDIAN, NEVADA

DEPENDENT RESURVEY



Surveyed by

Reilly & Magee

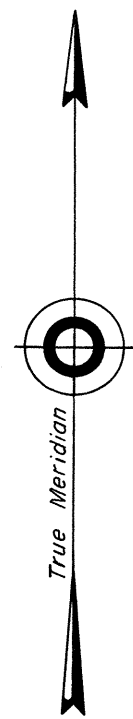
in 1881

Lat. 37°36'23.4" N.
Long. 115°50'33.1" W.

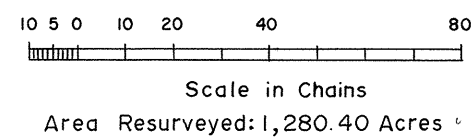
History of earlier surveys is contained in the field notes.

This plat represents a dependent resurvey of a portion of the east and north boundaries and a portion of the subdivisional lines of T. 4 S., R. 54 E., Mount Diablo Meridian, Nevada, designed to restore the corners in their original locations according to the best available evidence. Lottings and areas are as shown on the plat approved July 30, 1881.

Surveys executed by Eldon W. Sibley, Cadastral Surveyor, March 23 to May 18, 1964, under Special Instructions dated March 27, 1963, for Group No. 410, Nevada.



Mean Magnetic Declination
161/2° E.



UNITED STATES DEPARTMENT OF THE INTERIOR
BUREAU OF LAND MANAGEMENT
Washington, D. C. June 16, 1965

This plat is strictly conformable to the approved field notes, and the survey, having been correctly executed in accordance with the requirements of law and the regulations of this Bureau, is hereby accepted.

For the Director

Clark I. Gumm

Acting Chief, Division of Engineering

2194-A.

T4SR54E.

NS