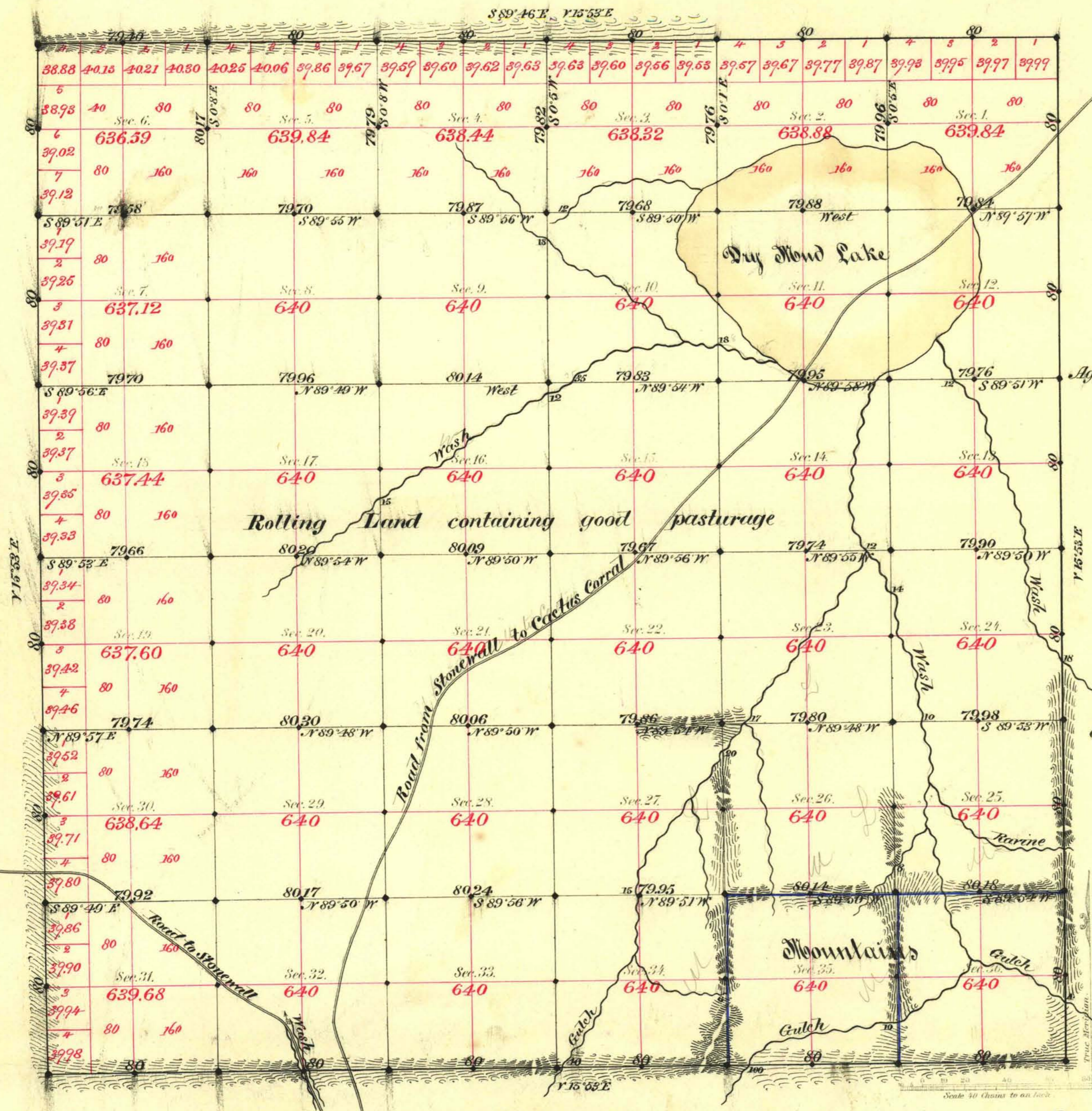


TOWNSHIP N^o 4 SOUTH RANGE N^o 44 EAST

MOUNT DIABLO MERIDIAN



Aggregate Area of Public Land Surveyed 23022.39 Acres

Commenced October 12th 1882
Completed " 14th "

Subdivisions run with a Variation of 15° 53' East

Survey Designated	By Whom Surveyed	Date of Contract	Amount of Survey	When Surveyed
Township Lines	C. F. Putnam	July 31 st 1882	23-79-40	1882
Subdivisions (black)	"	"	55-76-67	October
" (blue)	"	"	4-00-32	"

79 Cont.
158

The above Map of Township N^o 4 South of Range N^o 44 East of Mt. Diablo Meridian is strictly conformable to the field notes of the survey thereof on file in this Office, which have been examined and approved.

Surveyor General's Office. }
Reno Nevada }
June 1st 1883 }
C. C. Perkins }
Sur. Gen. Nevada }

A. L. Hancock & Co. Lth. S. P.