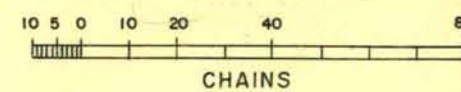
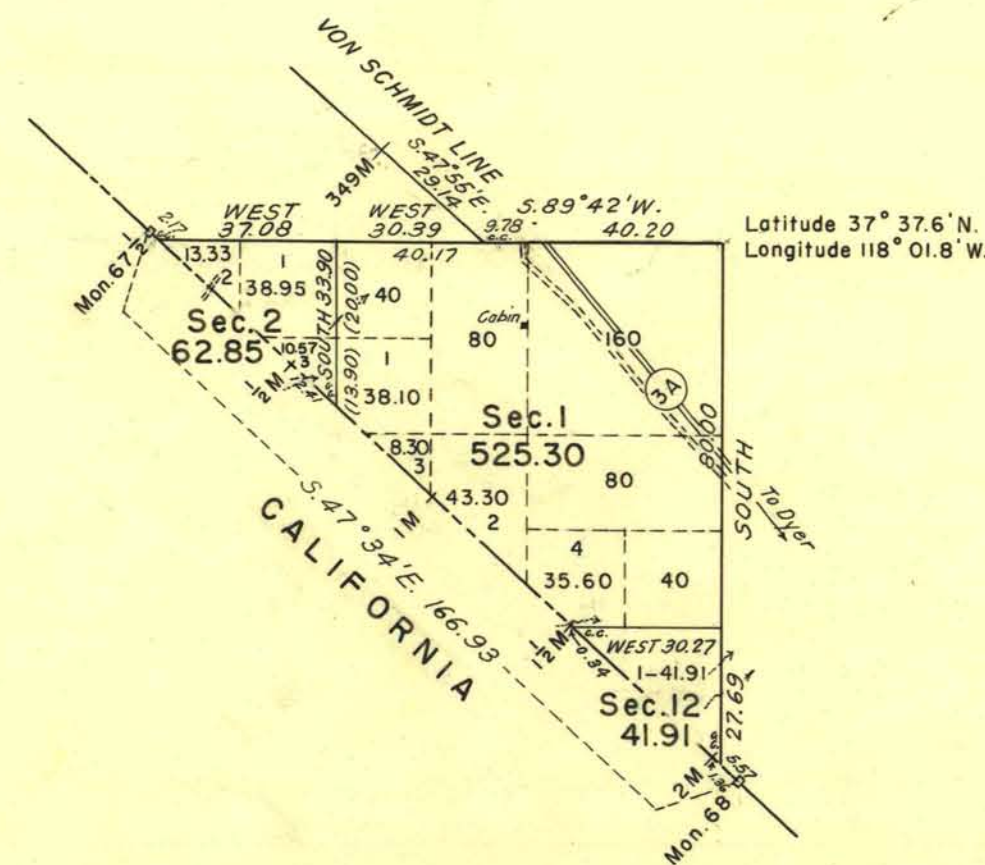


MAY 3 1955

ORIGINAL

TOWNSHIP 4 SOUTH, RANGE 35 EAST, OF THE MOUNT DIABLO MERIDIAN, NEVADA.



Area Surveyed, 630.06 Acres

History of earlier surveys contained in field notes.

The dependent resurvey of the Coast and Geodetic boundary line between the States of California and Nevada was executed by Roger F. Wilson, October 20 to 22, 1953, under special instructions for Group 267, California, dated March 3, 1931.

Survey of the subdivisional lines executed by Roger F. Wilson and Edward D. Lewis, October 12 to November 12, 1953, under supplemental special instructions for Group 251, Nevada, dated October 21, 1953.

UNITED STATES DEPARTMENT OF THE INTERIOR
BUREAU OF LAND MANAGEMENT
Washington, D. C. April 14, 1955

This plat is strictly conformable to the approved field notes, and the survey, having been correctly executed in accordance with the requirements of law and the regulations of this Bureau, is hereby accepted.

For the Director

Karl S. Harrington

Cadastral Engineering Staff Officer

1065-C

T. 4 S., R. 35 E.