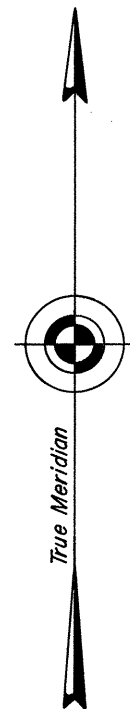
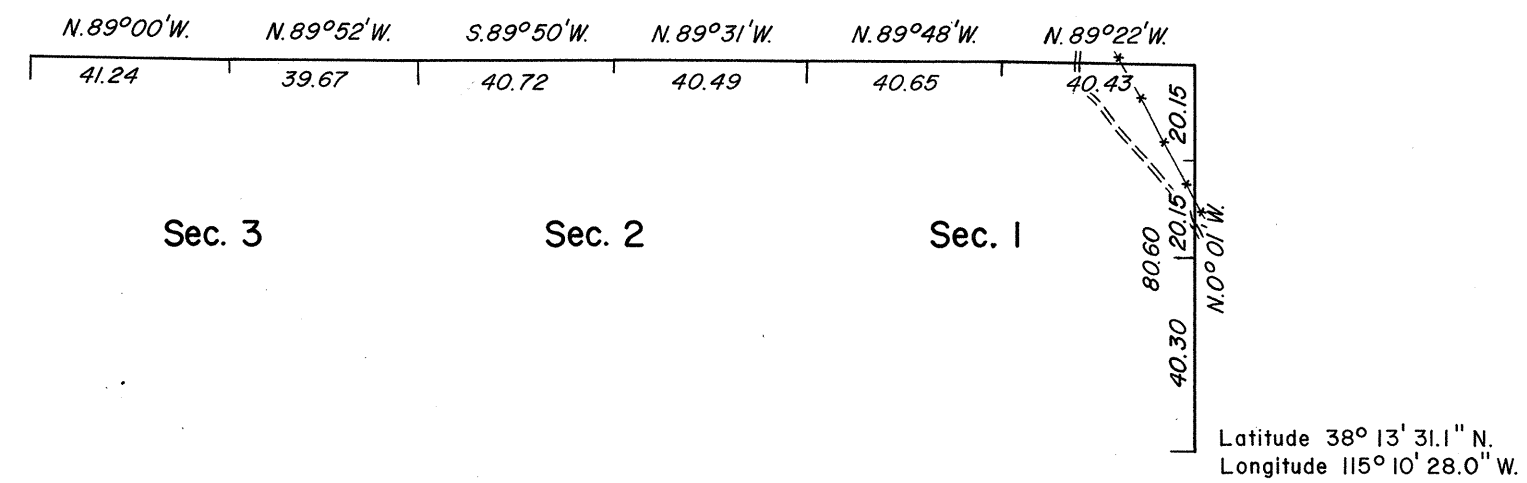


10:00 AM 10/5/1972

TOWNSHIP 4 NORTH, RANGE 60 EAST, OF THE MOUNT DIABLO MERIDIAN, NEVADA.

DEPENDENT RESURVEY



Mean Magnetic Declination
16½° E.

History of the earlier surveys is contained in the field notes.

This plat represents a dependent resurvey of portions of the east and north boundaries of T. 4 N., R. 60 E., designed to restore the corners in their original locations according to the best available evidence.

Survey executed by James R. Munson, Cadastral Surveyor, June 11 to June 25, 1970, under Special Instructions dated April 13, 1970 for Group No. 469, Nevada.

UNITED STATES DEPARTMENT OF THE INTERIOR
BUREAU OF LAND MANAGEMENT
Washington, D.C. August 28, 1972

This plat is strictly conformable to the approved field notes, and the survey, having been correctly executed in accordance with the requirements of law and the regulations of this Bureau, is hereby accepted.

For the Director

Clark I. Hummer

Chief, Division of Cadastral Survey

