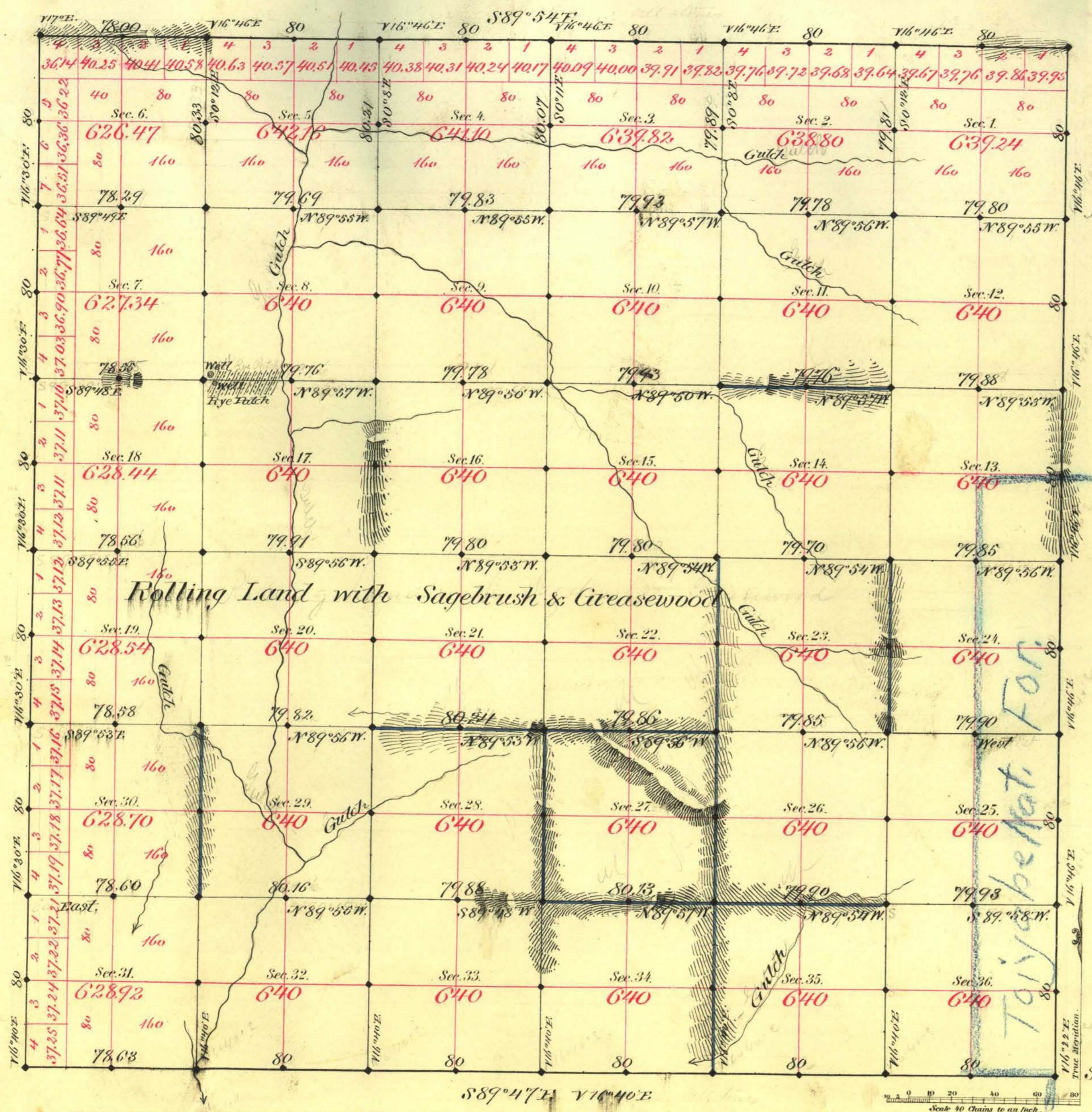


TOWNSHIP N^o 4 NORTH RANGE N^o 44 EAST MOUNT DIABLO MERIDIAN



Aggregate Area of Public Lands Surveyed 22969.53 Acres

Survey Commenced July 13th 1881
 " Completed " 20th "

Subdivisions not noted run with Var. 16°46' East

Survey Designated	By Whom Surveyed	Date of Contract	Amount of Survey	When Surveyed
Tp. James	Glover & Ferris	April 15 th 1881	23 Chgs 183	1881
Subd. Black	"	" " "	48 - 69 - 84	July "
" Blue	"	" " "	10 - 19 - 89	" "

The above Map of Township N^o 4 North of Range N^o 44 East Mount Diablo Meridian is strictly conformable to the field notes of the survey thereof on file in this Office, which have been examined and approved.

Surveyor General's Office,
 Victoria City, B.C.
 September 20th 1881

C. S. Davy
 Sur. Gen.