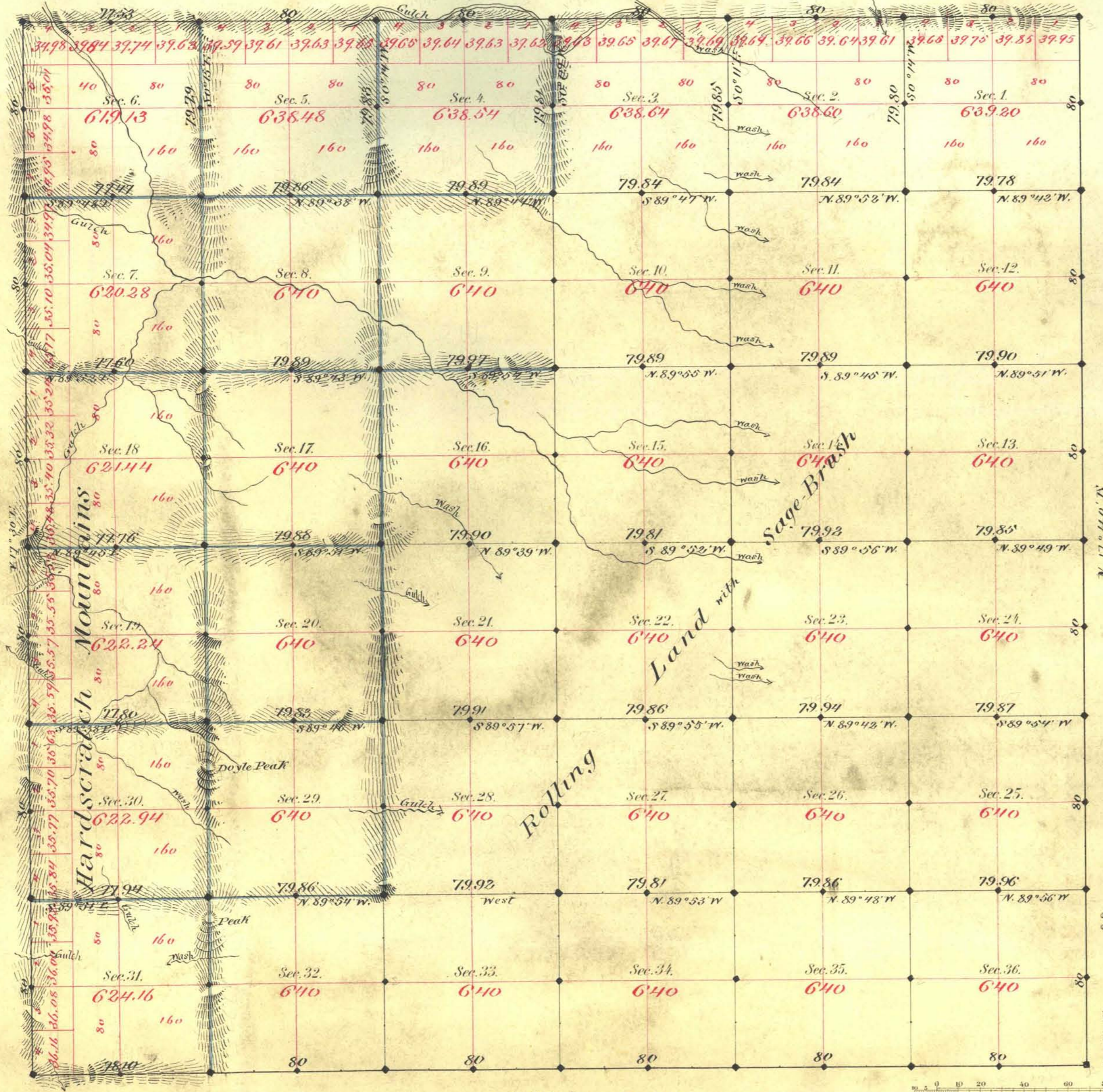


TOWNSHIP N^o 4 NORTH RANGE N^o 39 EAST MOUNT DIABLO MERIDIAN

S 89° 52' E. V. 17° 40' E



Aggregate Area of Public Land Surveyed 22,922.65 Acres

Survey Commenced March 8th 1881
Completed " 14th "

Subdivision Lines run with variation 17° 30' East

Doyle Peak is not mentioned in the

Survey Designated	By Whom Surveyed	Date of Contract	Amount of Survey	When Surveyed	960 Cow
Township	Ratlays & Magee	Decr 21 st 1880	N. 33 - 35 - 37 - 39	1881	108
Subdivisions	"	"	35 - 37 - 40	March	"
"	"	"	33 - 37 - 18	"	"

The above Map of Township N^o 4 North of Range N^o 39 East Mount Diablo Meridian is strictly conformable to the field notes of the survey thereof on file in this Office, which have been examined and approved.
Surveyor General's Office, Virginia City Nev.
March 25th 1881
C. S. Parry
Sur. Gen. Nev.

T4N, R39E VD