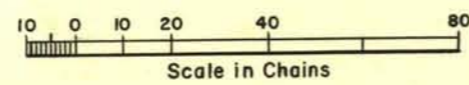
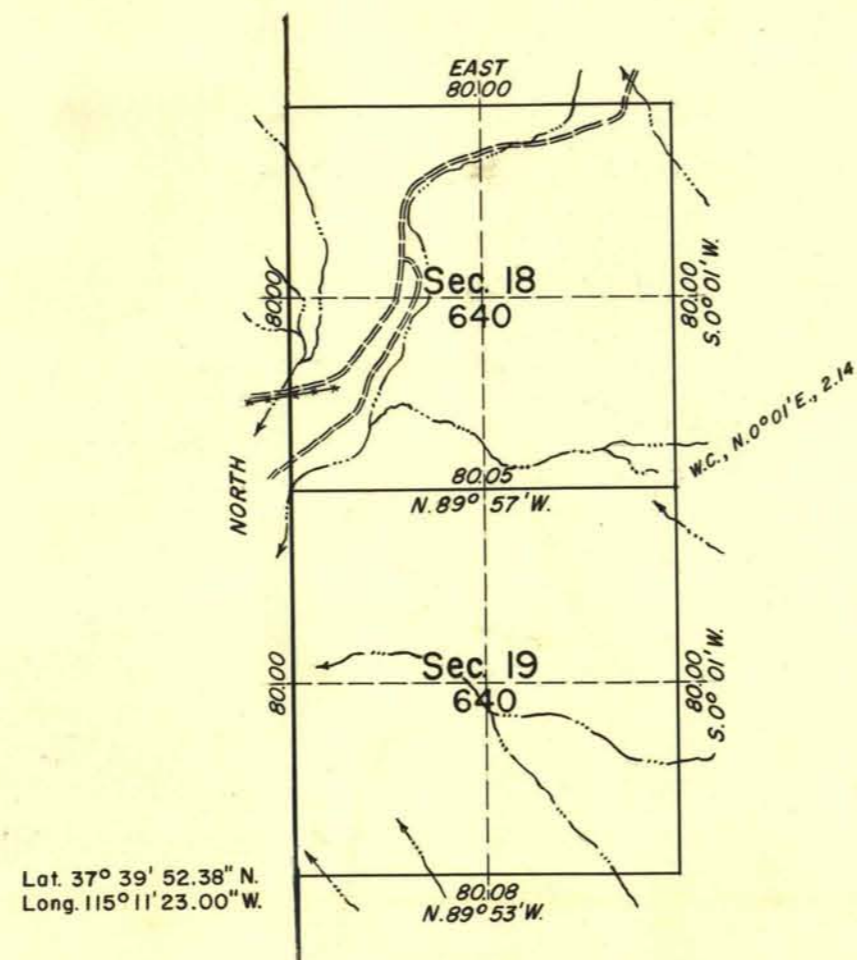
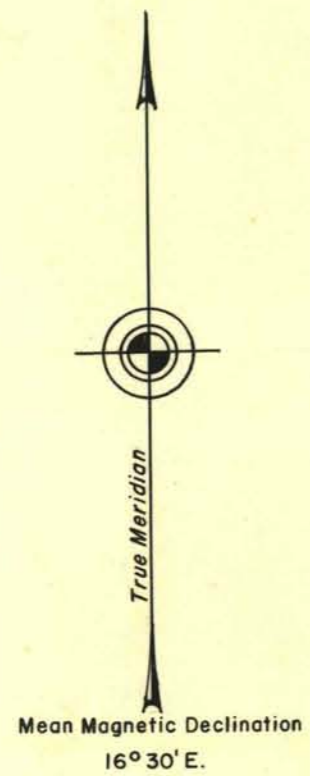


# TOWNSHIP 3 SOUTH, RANGE 61 EAST, OF THE MOUNT DIABLO MERIDIAN, NEVADA



Area Surveyed, 1,280.00 Acres.

History of earlier surveys is contained in the field notes.

Survey executed by Horace G. Parker under special instructions dated January 26, 1961 for Group 392, Nevada.

UNITED STATES DEPARTMENT OF THE INTERIOR  
BUREAU OF LAND MANAGEMENT  
Washington, D.C. April 3, 1962

This plat is strictly conformable to the approved field notes, and the survey, having been correctly executed in accordance with the requirements of law and the regulations of this Bureau, is hereby accepted.

For the Director

Chief, Division of Engineering