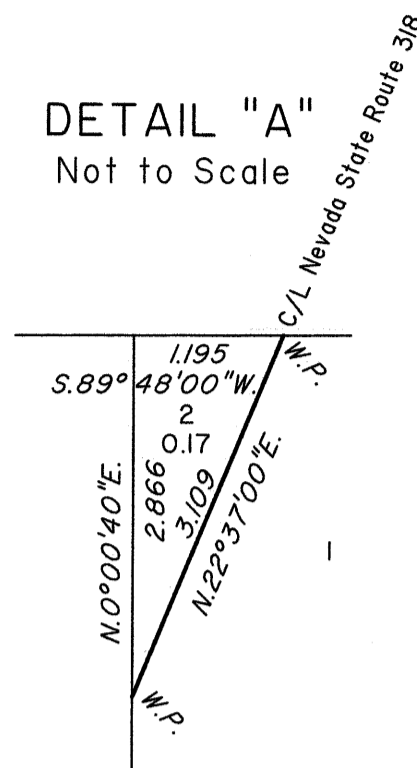


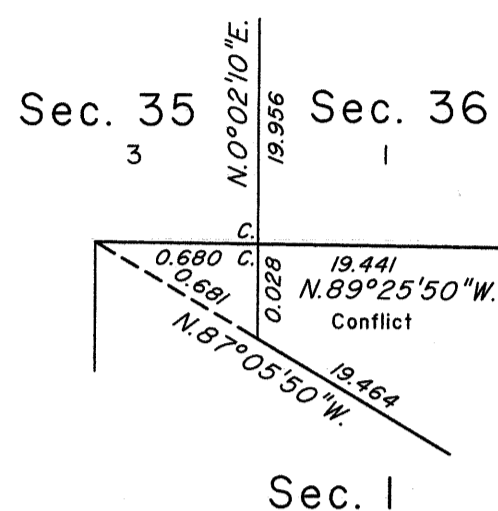
# TOWNSHIP 3 SOUTH, RANGE 60 EAST, OF THE MOUNT DIABLO MERIDIAN, NEVADA

## DEPENDENT RESURVEY, SUBDIVISION AND METES-AND-BOUNDS SURVEY

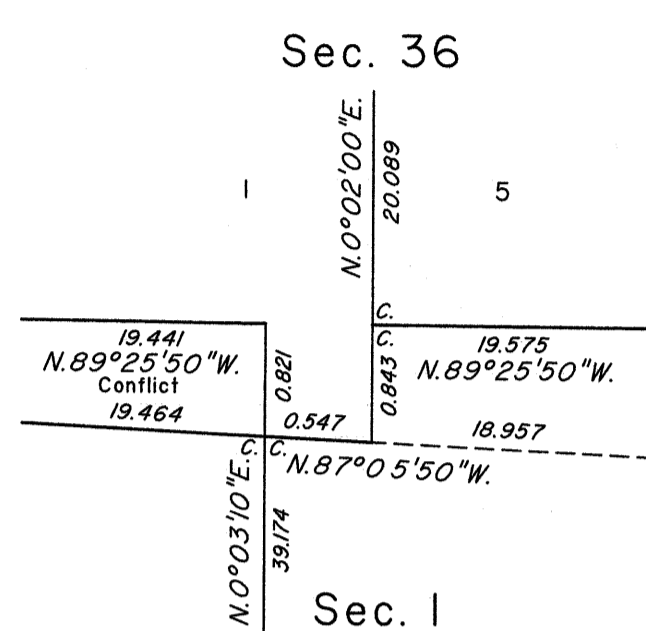
DETAIL "A"  
Not to Scale



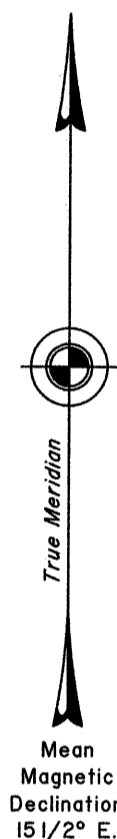
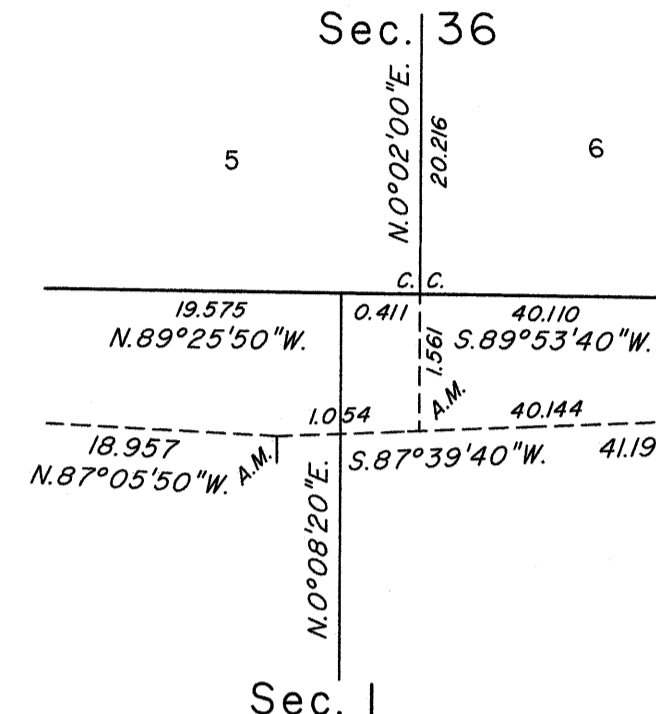
DETAIL "B"  
Not to Scale



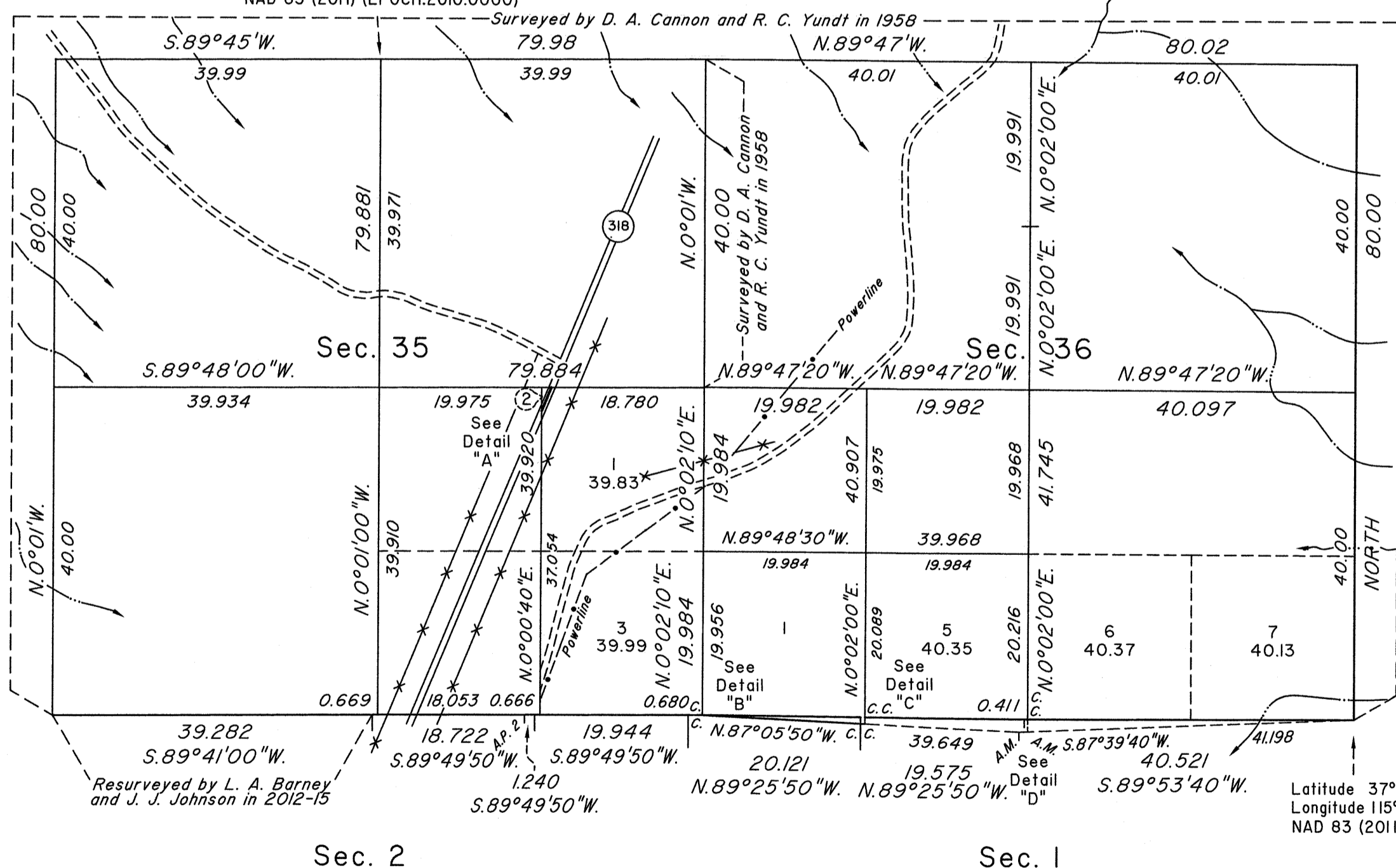
DETAIL "C"  
Not to Scale



DETAIL "D"  
Not to Scale



Latitude 37°38'59.822" N.  
Longitude 115°13'04.875" W.  
NAD 83 (2011) (EPOCH:2010.0000)



A history of surveys is contained in the field notes.

A portion of the north boundary of Township 4 South, Range 60 East, was dependently resurveyed concurrently under this same Group.

This plat represents the dependent resurvey of a portion of the south boundary and a portion of the subdivisional lines designed to restore the corners in their true original locations according to the best available evidence, and the subdivision of sections 35 and 36, and a metes-and-bounds survey of the centerline of Nevada State Route 318, through a portion of the NE 1/4 of the SE 1/4 of section 35, Township 3 South, Range 60 East, Mount Diablo Meridian, Nevada.

Except as indicated hereon, the lottings and areas are as shown on the plat accepted March 10, 1959.

Survey executed by Joseph J. Johnson, Cadastral Surveyor, beginning January 2, 2014 and completed May 26, 2015, pursuant to Special Instructions dated December 18, 2013, and Supplemental Special Instructions dated May 22, 2015, for Group No. 929, Nevada.

UNITED STATES DEPARTMENT OF THE INTERIOR  
BUREAU OF LAND MANAGEMENT

Reno, Nevada June 2, 2015

This plat is strictly conformable to the approved field notes, and the survey, having been correctly executed in accordance with the requirements of law and the regulations of this Bureau, is hereby accepted.

For the Director

*Mahmud O. Hammami*

Chief Cadastral Surveyor for Nevada

