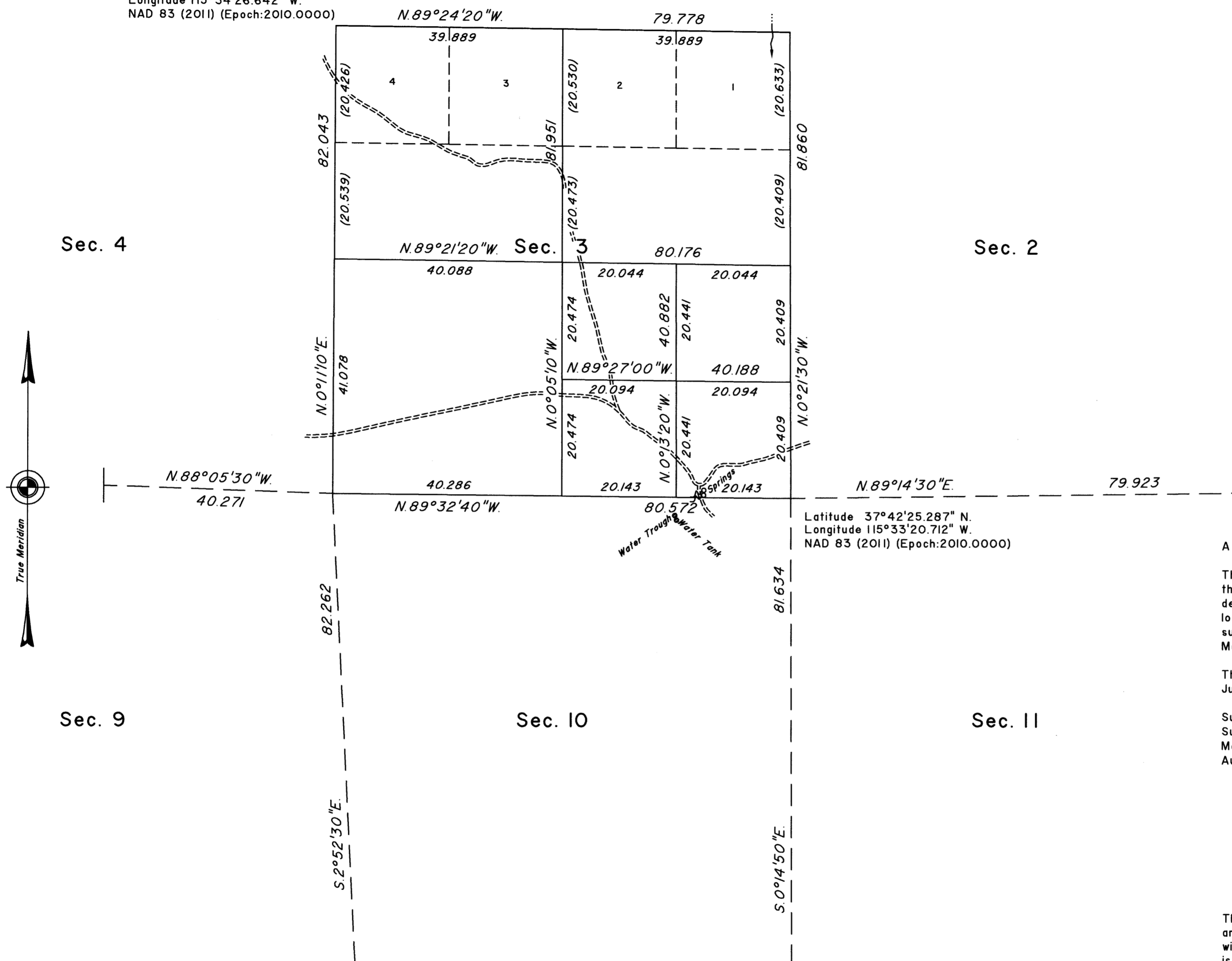


TOWNSHIP 3 SOUTH, RANGE 57 EAST, OF THE MOUNT DIABLO MERIDIAN, NEVADA

DEPENDENT RESURVEY AND SUBDIVISION

Latitude 37°43'19.222" N.
Longitude 115°34'26.642" W.
NAD 83 (2011) (Epoch:2010.0000)



Latitude 37°42'25.287" N.
Longitude 115°33'20.712" W.
NAD 83 (2011) (Epoch:2010.0000)

A history of surveys is contained in the field notes.

This plat represents the dependent resurvey of a portion of the north boundary and a portion of the subdivisional lines designed to restore the corners in their true original locations according to the best available evidence, and the subdivision of section 3, Township 3 South, Range 57 East, Mount Diablo Meridian, Nevada.

The lottings and areas are as shown on the plat approved July 30, 1881.

Survey executed by Joseph J. Johnson, Cadastral Surveyor, beginning September 9, 2016, and completed March 11, 2017, pursuant to Special Instructions dated August 16, 2016, for Group No. 965, Nevada.

UNITED STATES DEPARTMENT OF THE INTERIOR
BUREAU OF LAND MANAGEMENT

Reno, Nevada June 18, 2020

This plat is strictly conformable to the approved field notes, and the survey, having been correctly executed in accordance with the requirements of law and the regulations of this Bureau, is hereby accepted.

For the Director

Michael O. Hammorsy

Chief Cadastral Surveyor for Nevada

