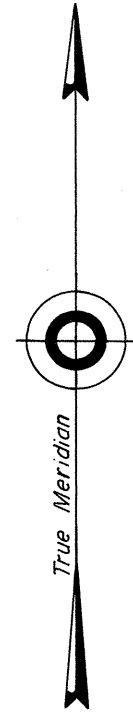
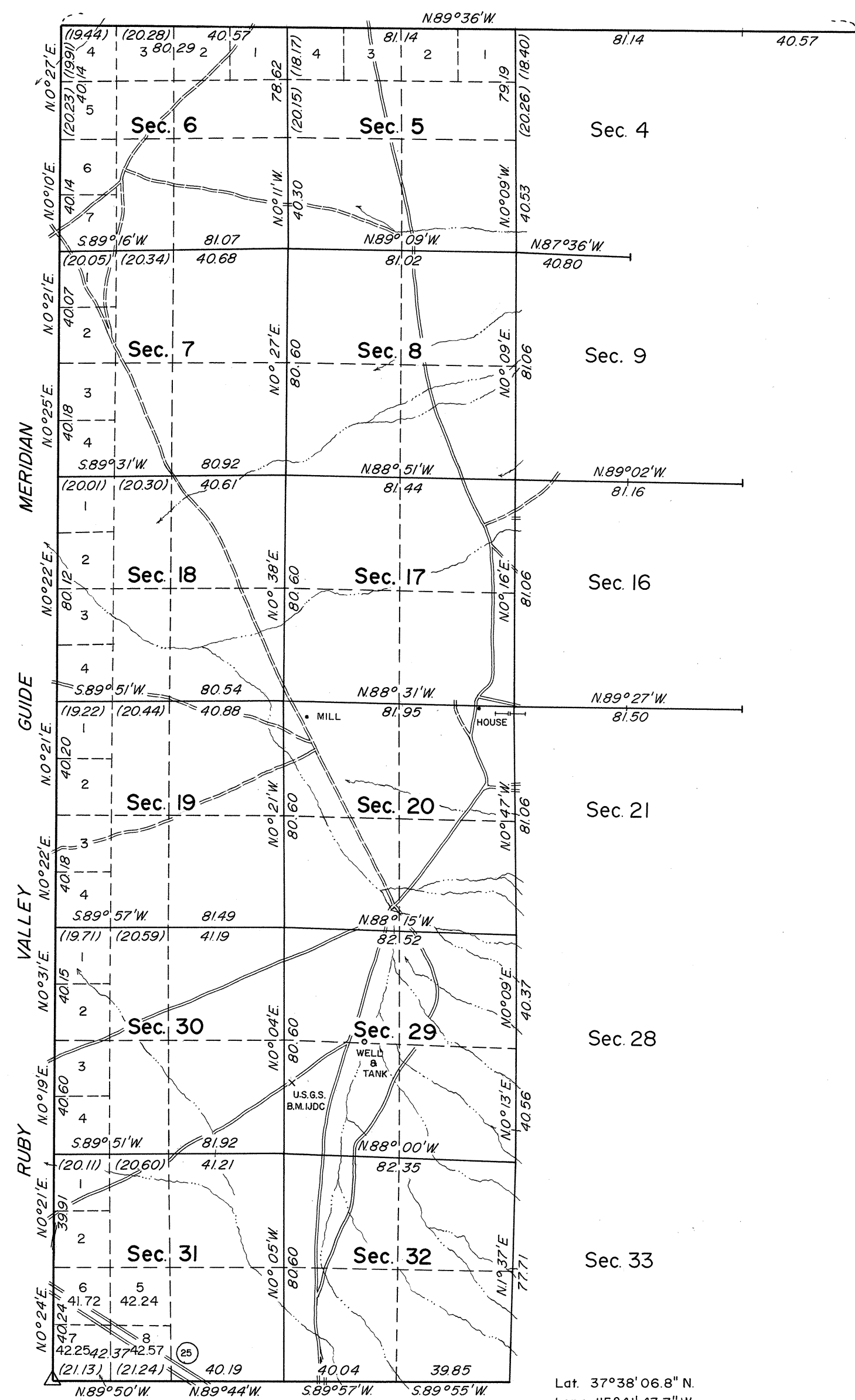


TOWNSHIP 3 SOUTH, RANGE 56 EAST, OF THE MOUNT DIABLO MERIDIAN, NEVADA

DEPENDENT RESURVEY



Mean Magnetic Declination
16 1/2° E.

"Ruby"
Nevada Planning Division
Lat. 37°38'06.905"N.
Long. 115°43'56.938"W.

Lat. 37°38'06.8"N.
Long. 115°41'43.7"W.



Scale in Chains
Area Resurveyed: 7,636.50 Acres

History of earlier surveys is contained in the field notes.

This plat represents a dependent resurvey of portions of the north and south boundaries, and a portion of the subdivisional lines of T. 3 S., R. 56 E., Mount Diablo Meridian, Nevada, designed to restore the corners in their original locations according to the best available evidence. Lottings and areas, except as shown hereon, are as shown on the plat approved July 30, 1881.

Surveys executed by Eldon W. Sibley, Cadastral Surveyor, March 2 to March 17, 1964, under Special Instructions dated March 27, 1963, for Group No. 410, Nevada.

Surveyed by

Reilly and Magee

in 1881

UNITED STATES DEPARTMENT OF THE INTERIOR
BUREAU OF LAND MANAGEMENT
Washington, D. C. June 16, 1965

This plat is strictly conformable to the approved field notes, and the survey, having been correctly executed in accordance with the requirements of law and the regulations of this Bureau, is hereby accepted.

For the Director

Acting Chief, Division of Engineering

2345-A

T3S, R56E.