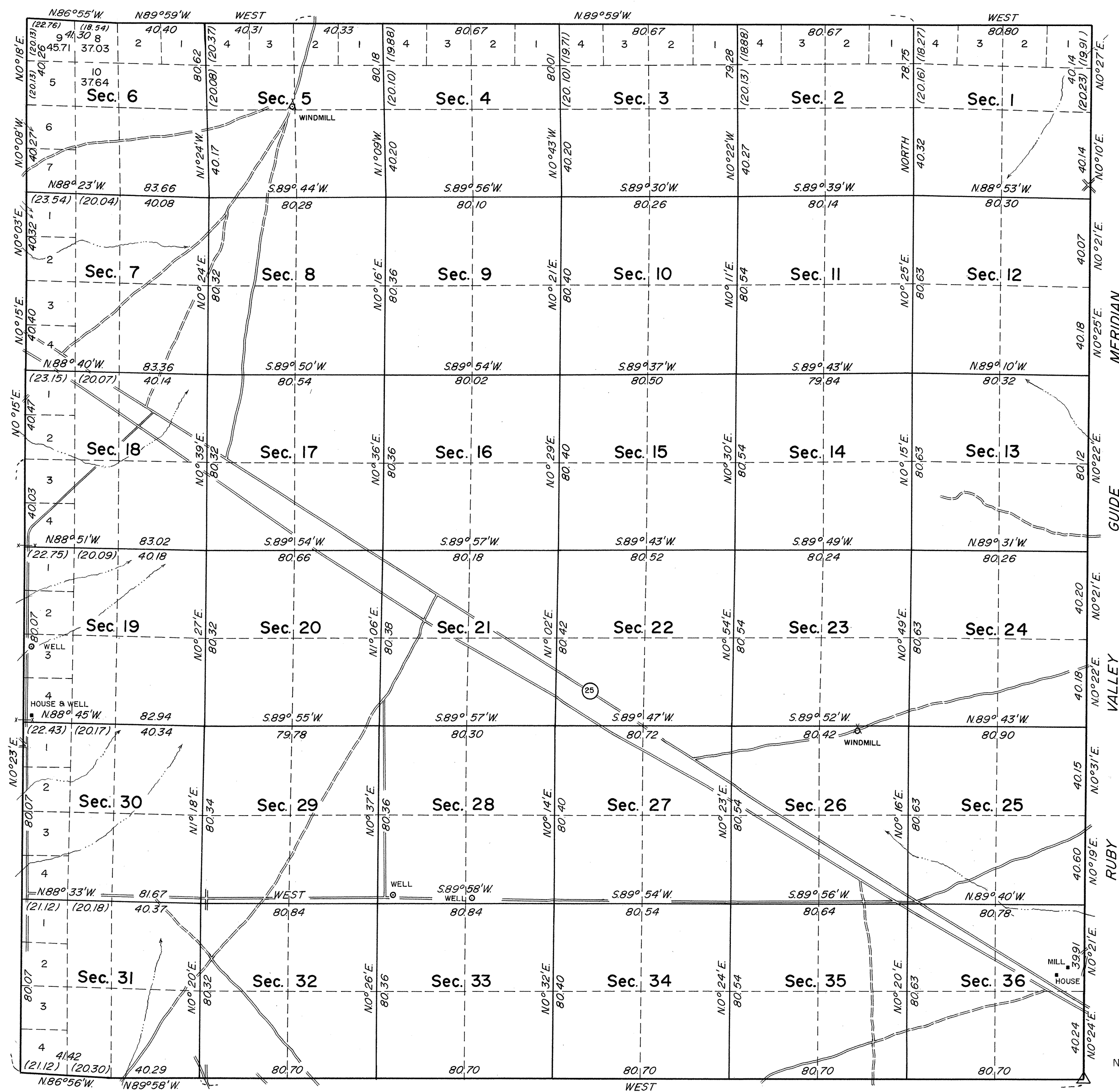


# TOWNSHIP 3 SOUTH, RANGE 55 EAST, OF THE MOUNT DIABLO MERIDIAN, NEVADA

## DEPENDENT RESURVEY



True Meridian

Mean Magnetic Declination  
16 1/2° E.

History of earlier surveys is contained in the field notes.

This plat represents a dependent resurvey of all the boundaries and subdivisional lines of T. 3 S., R. 55 E., Mount Diablo Meridian, Nevada, designed to restore the corners in their original locations, according to the best available evidence. Lottings and areas, except as shown hereon, are as shown on the plat approved August 19, 1881.

Surveys executed by Eldon W. Sibley, Cadastral Surveyor, March 18 to April 18, 1964, under Special Instructions dated March 27, 1963, for Group No. 410, Nevada.

UNITED STATES DEPARTMENT OF THE INTERIOR  
BUREAU OF LAND MANAGEMENT  
Washington, D. C. June 23, 1965

This plat is strictly conformable to the approved field notes, and the survey, having been correctly executed in accordance with the requirements of law and the regulations of this Bureau, is hereby accepted.

For the Director  
*E. E. Lemington*  
Chief, Division of Engineering

"Ruby"  
Nevada Planning Division  
Lat 37°38'06.905"N  
Long 115°43'56.938"W

0 5 10 20 40 80  
Scale in Chains  
Area Resurveyed: 23,125.75 Acres

2267-A

T3S R55E