

TOWNSHIP 3 SOUTH, RANGE 54 EAST, OF THE MOUNT DIABLO MERIDIAN, NEVADA

DEPENDENT RESURVEY

OFFICIALLY FILED
NEVADA STATE OFFICE
10:00 Am. July 6, 1965

History of earlier surveys is contained in the field notes.

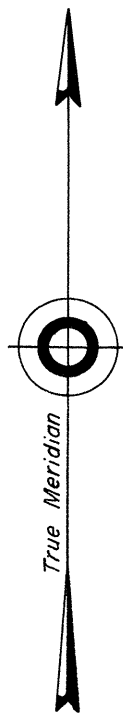
This plat represents a dependent resurvey of the east boundary, portions of the north and south boundaries and a portion of the subdivisional lines of T. 3 S., R. 54 E., Mount Diablo Meridian, Nevada, designed to restore the corners in their original locations according to the best available evidence. Lottings and areas are as shown on the plat approved August 19, 1881.

Surveys executed by Eldon W. Sibley, Cadastral Surveyor, April 27 to May 8, 1964, under Special Instructions dated March 27, 1963, for Group No. 410, Nevada.

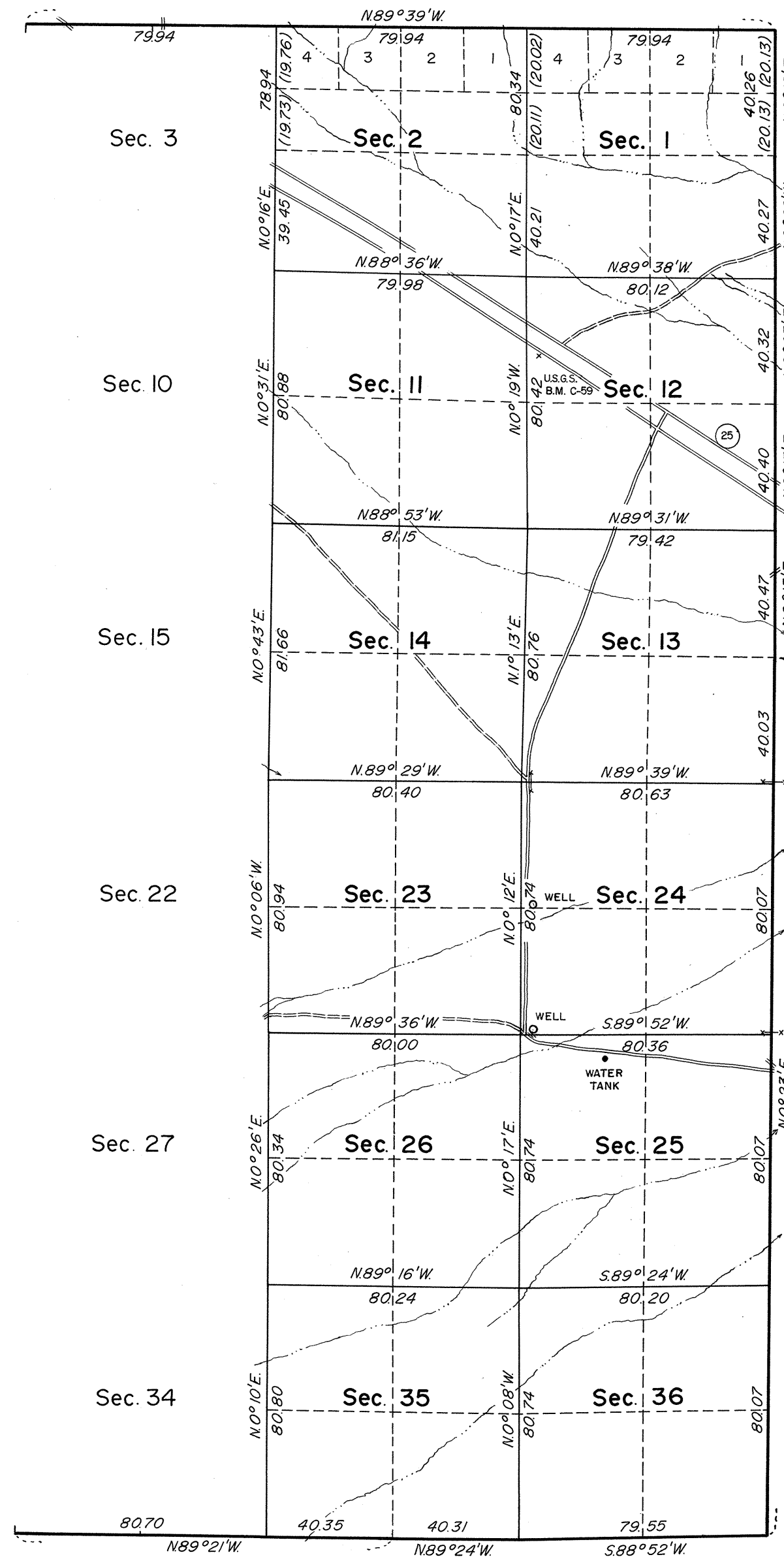
Surveyed by

Reilly & Magee

in 1881



Mean Magnetic Declination
16 1/2° E.



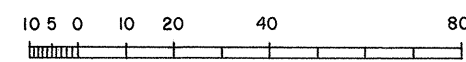
UNITED STATES DEPARTMENT OF THE INTERIOR
BUREAU OF LAND MANAGEMENT
Washington, D. C. June 16, 1965

This plat is strictly conformable to the approved field notes, and the survey, having been correctly executed in accordance with the requirements of law and the regulations of this Bureau, is hereby accepted.

For the Director

Acting Chief, Division of Engineering

Lat. 37°38'08.4"N.
Long. 115°50'34.9"W.



Scale in Chains
Area Resurveyed: 7,679.52 Acres

2193-A

T3S, R54E