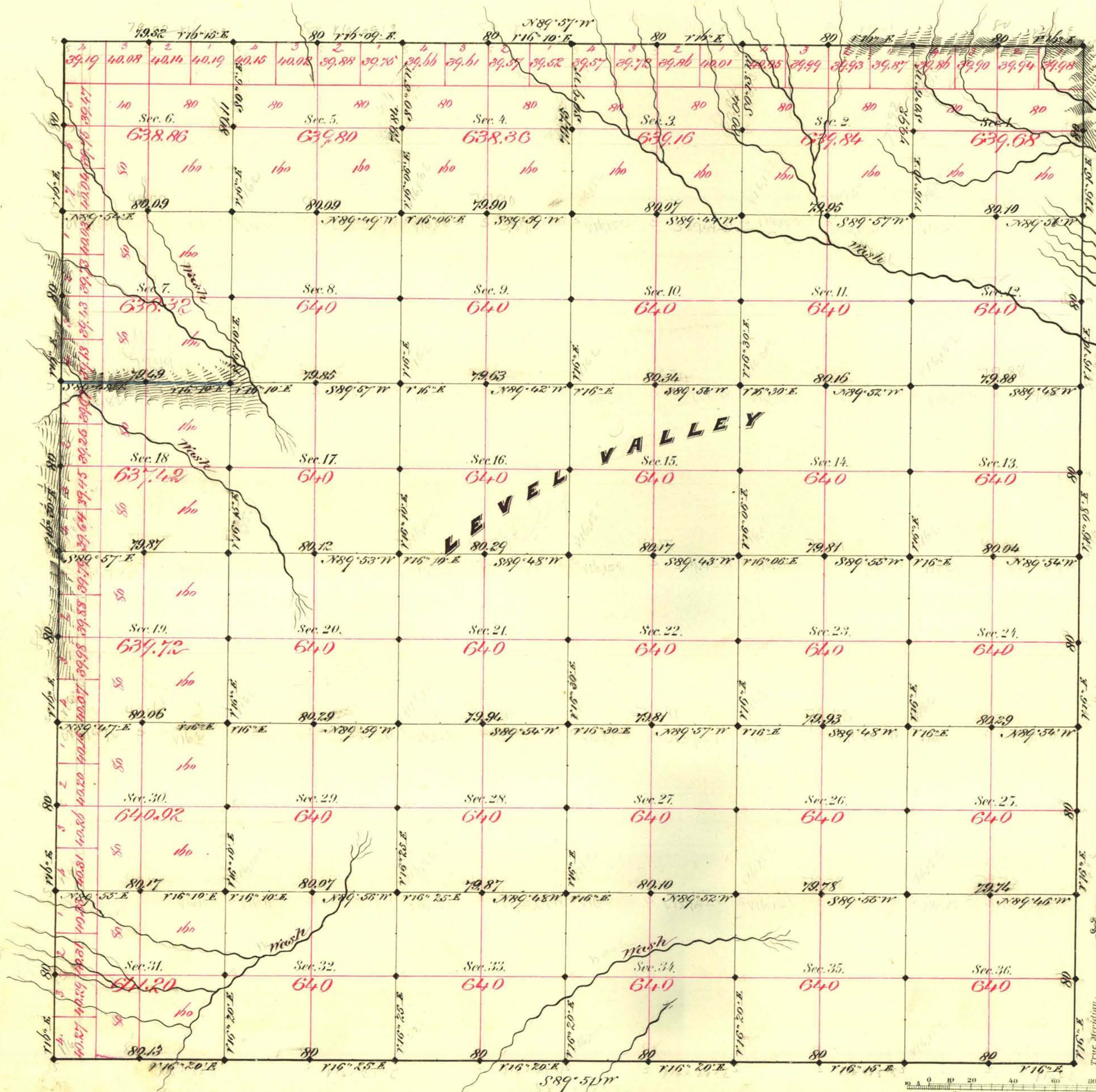


TOWNSHIP N^o 3 SOUTH RANGE N^o 54 EAST MOUNT DIABLO MERIDIAN



Aggregate area of Public Land Surveyed 23,033.28 Acres

Commenced June 23rd 1881
Completed June 29th

Subdivisions not noted run with a bearing of 16° 15' E.

Survey Designated	By Whom Surveyed	Date of Contract	Amount of Survey	When Surveyed
Township lines	Reilly & Magee	Feb. 23 rd 1881	36 - 00 - 00	1881
Subdivisions blocks 4	"	"	39 - 00 - 07	June "
"	"	"	79 - 19	"

N^o 1st Cor.
117 - 58.5
" - 323
"

The above Map of Township N^o 3 South of Range N^o 54 East of Mount Diablo Meridian is strictly conformable to the field notes of the survey thereof on file in this Office, which have been examined and approved.

Surveyor General's Office,
Virginia City, Nev.
August 19th 1881

C. J. Davis
Sur. Gen.