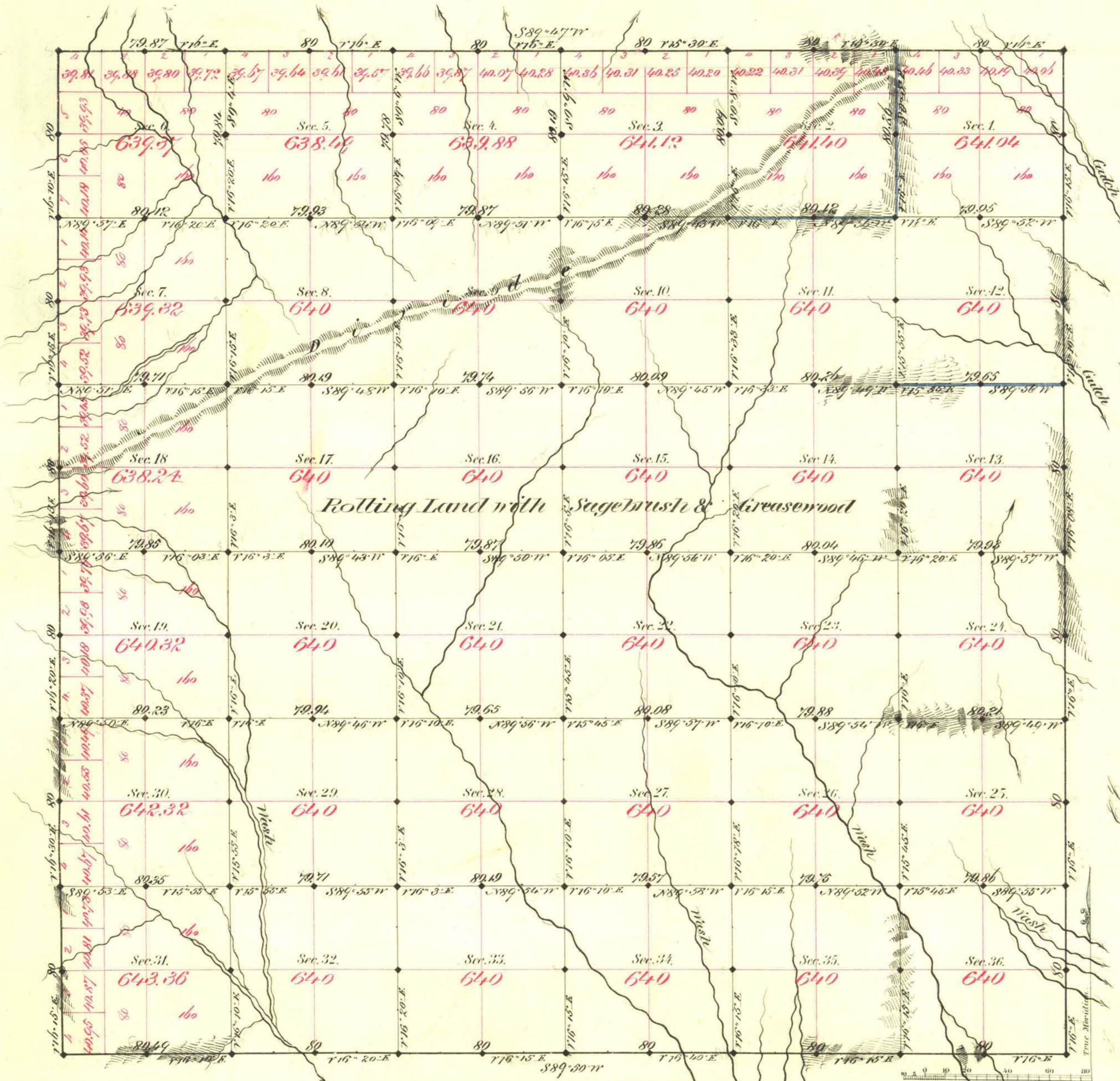


TOWNSHIP N^o 3 SOUTH RANGE N^o 53 EAST MOUNT DIABLO MERIDIAN



Aggregate Area of Public Land Surveyed 23,044.86 Ac.

Commenced June 16th 1851
Completed " 23rd "

| Surveys Designated | By Whom Surveyed | Date of Contract | Amount of Surveys | When Surveyed |
|---------------------|------------------|----------------------------|-------------------------------|--------------------|
| Township line | Quincy & Mayer | Feb. 23 rd 1851 | M ^o 24 - 50 - 1851 | 1851 |
| Sub division (part) | " | " | 36 - 79 - 11 | Jan ^y " |
| " | " | " | 3 - 00 - 03 | " |

79th Cont.
117
"

The above Map of Township N^o 3 South of Range N^o 53 East
Mt. Diablo Meridian is strictly conformable to the field
notes of the survey thereof on file in this Office, which have been examined and approved.
Surveyor General's Office,
Virginia City Nev.
August 19th 1881
C. J. Davis, Sur. Gen. Nev.