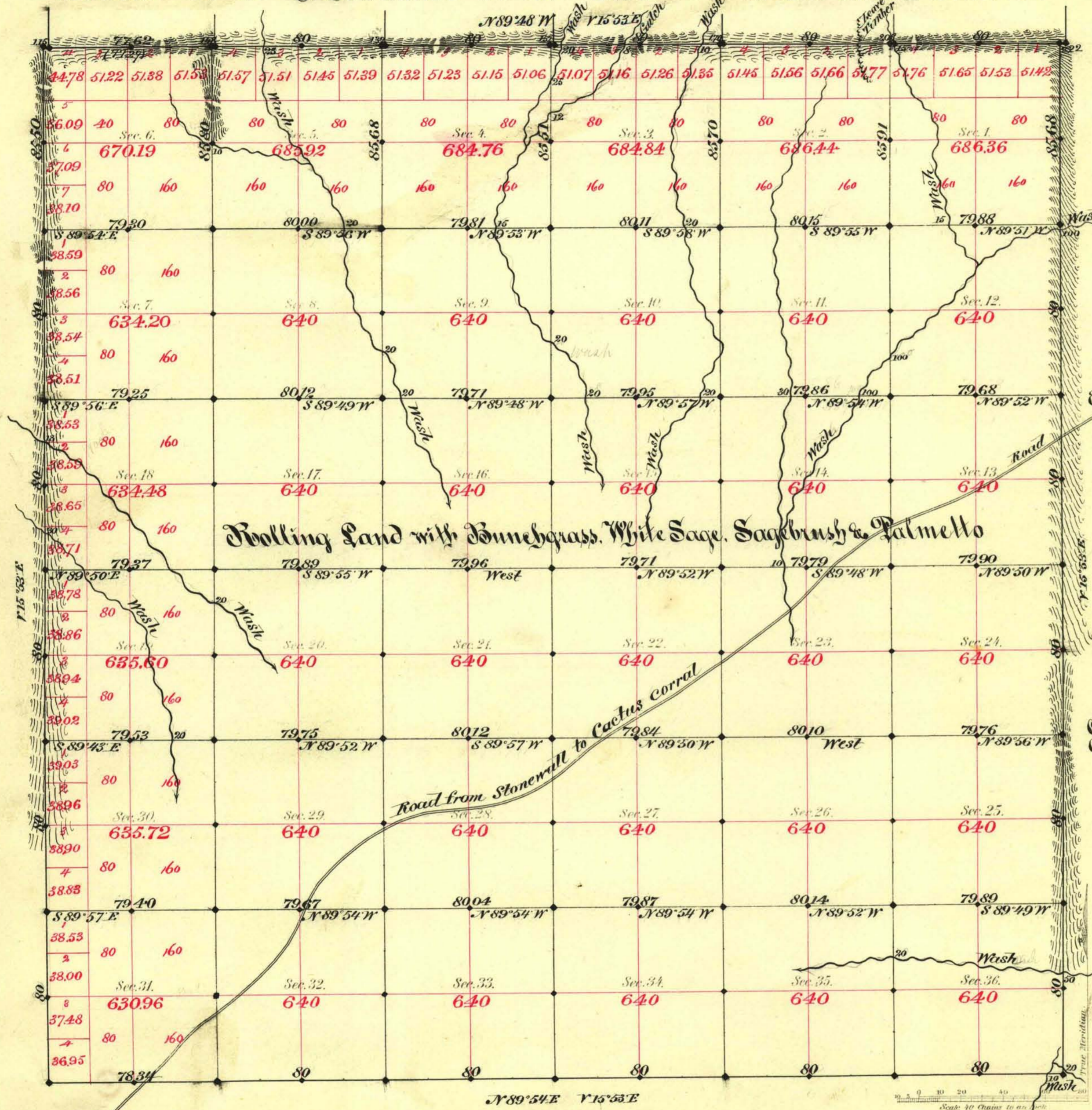


TOWNSHIP N^o 3 SOUTH RANGE N^o 45 EAST MOUNT DIABLO MERIDIAN



Aggregate Area of Public Land surveyed 23269.47 Acres

Commenced October 5th 1882
Completed " 7th "

Subdivisions run with a Variation of 15° 53' East

Surveys Designated	By Whom Surveyed	Date of Contract	Amount of Surveys	When Surveyed
Township lines	C. E. Pitman	July 31 st 1882	N ^o 23-09-32	1882
Subdivisions	"	"	60-23-15	October
Connect on N. Bdy	"	"	8-10	"

779 Cor.
153

The above Map of Township N^o 3 South of Range N^o 45 East of Mt Diablo Meridian is strictly conformable to the field notes of the survey thereof on file in this Office, which have been examined and approved.
Surveyor General's Office }
Reno Nevada } C. C. Paving.
June 1st 1883 } Sur. Gen. Nevada