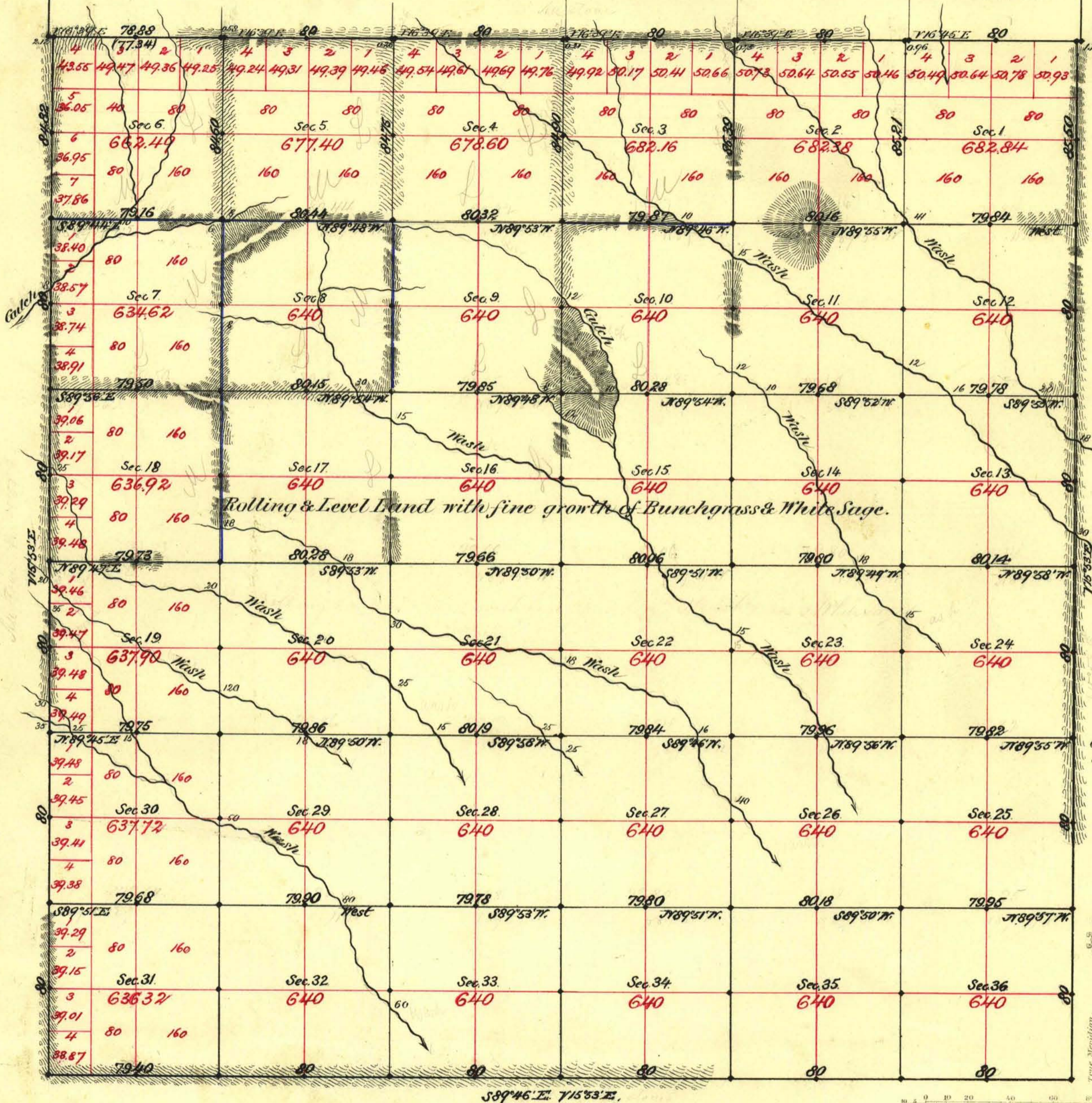


TOWNSHIP N^o 3 SOUTH RANGE N^o 44 EAST MOUNT DIABLO MERIDIAN



Aggregate Area of Public Land Surveyed 23,249.35 Acres.

Commenced Oct. 2nd 1882.
Completed " 4th "

Subdivisions run with a Variation of 15° 53' East.

Surveys Designated	By Whom Surveyed	Date of Contract	Amount of Surveys	When Surveyed
North Bdy.	A. Ludlum	March 2 nd 1881	5-78-88	1881
East & West	C. E. Putnam	July 31 st 1882	18-09-72	1882
Subdiv ^{ns} black	"	"	54-22-79	October 1882
blue	"	"	5-79-47	"
Connect ^{ns} on N. Bdy.	"	"	2-70	"

7th Con.
116
158
"
"

The above Map of Township N^o 3 South of Range N^o 44 East of Mount Diablo Meridian is strictly conformable to the field notes of the survey thereof on file in this Office, which have been examined and approved.
Surveyor General's Office,
Terr. Nevada
June 1st 1883
C. C. Downing,
Sur. Gen. Nevada