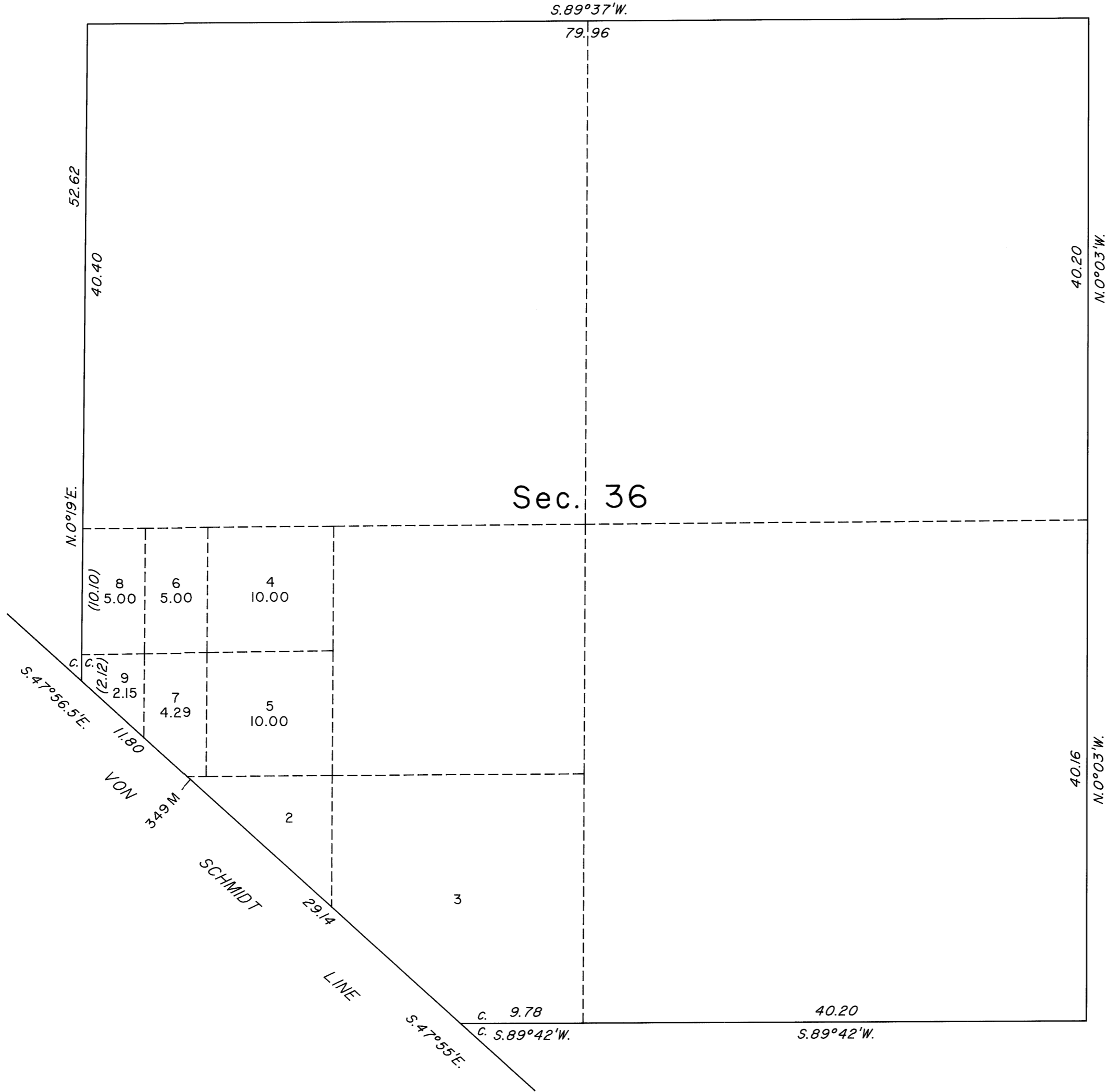
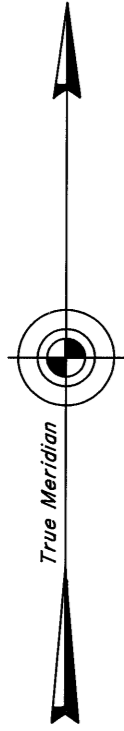


TOWNSHIP 3 SOUTH, RANGE 35 EAST, OF THE MOUNT DIABLO MERIDIAN, NEVADA
SUPPLEMENTAL PLAT OF SECTION 36

OFFICIALLY FILED
NEVADA STATE OFFICE
at 10:00 AM on October 23, 2003



This plat, showing a subdivision of original lot 1, sec. 36, T.3S., R.35E., Mount Diablo Meridian, Nevada, is based upon the plat approved November 6, 1887, and the plat accepted August 8, 1956.

UNITED STATES DEPARTMENT OF THE INTERIOR
BUREAU OF LAND MANAGEMENT

Reno, Nevada October 21, 2003

This plat, showing amended lottings, is based upon the official records, and having been correctly prepared in accordance with the regulations of this Bureau, is hereby accepted.

For the Director

Acting Chief Cadastral Surveyor, Nevada

