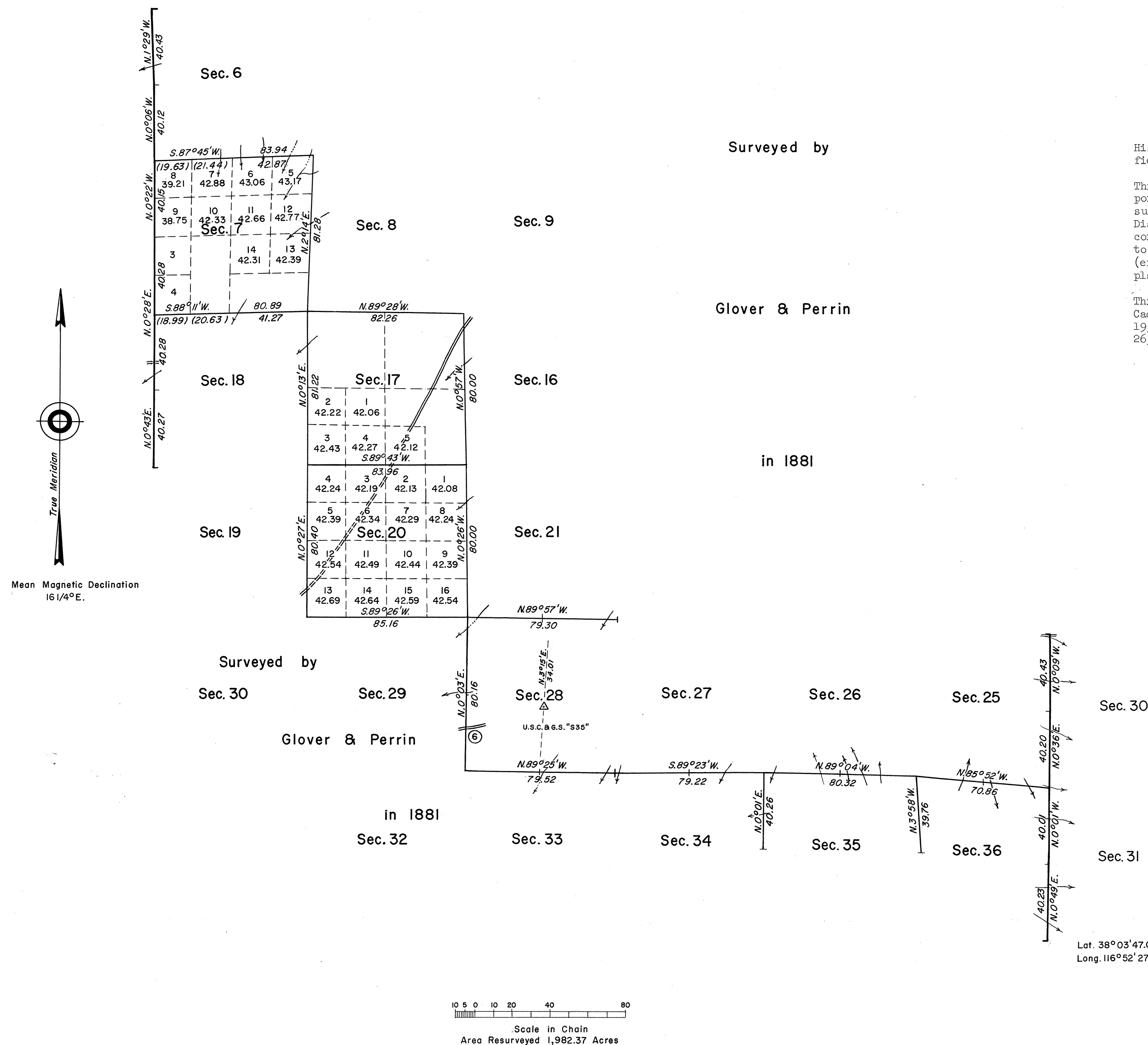


ORIGINAL

# TOWNSHIP 3 NORTH, RANGE 45 EAST, OF THE MOUNT DIABLO MERIDIAN, NEVADA

DEPENDENT RESURVEY

OFFICIALLY FILED  
NEVADA LAND OFFICE  
10:00 A.M. AUGUST 3, 1966



History of the earlier surveys is contained in the field notes.

This plat represents the dependent resurvey of a portion of the west boundary and a portion of the subdivisional lines of T. 3 N., R. 45 E., Mount Diablo Meridian, Nevada, designed to restore the corners in their true original locations according to the best available evidence. Lottings and areas (except as indicated hereon) are as shown on the plat approved September 20, 1881.

This resurvey was executed by Alburn D. Griffin, Cadastral Surveyor, October 11, 1965, to October 19, 1965, under Special Instructions dated March 26, 1963, for Group No. 412, Nevada.

UNITED STATES DEPARTMENT OF THE INTERIOR  
BUREAU OF LAND MANAGEMENT  
Washington, D. C. June 24, 1966

This plat is strictly conformable to the approved field notes, and the survey, having been correctly executed in accordance with the requirements of law and the regulations of this Bureau, is hereby accepted.

For the Director

*E. E. Runington*  
Chief, Division of Engineering

RECEIVED  
Bureau of Land Management  
NEVADA LAND OFFICE  
NOV 28 1966  
NEVADA STATE OFFICE  
CARSON, NEVADA