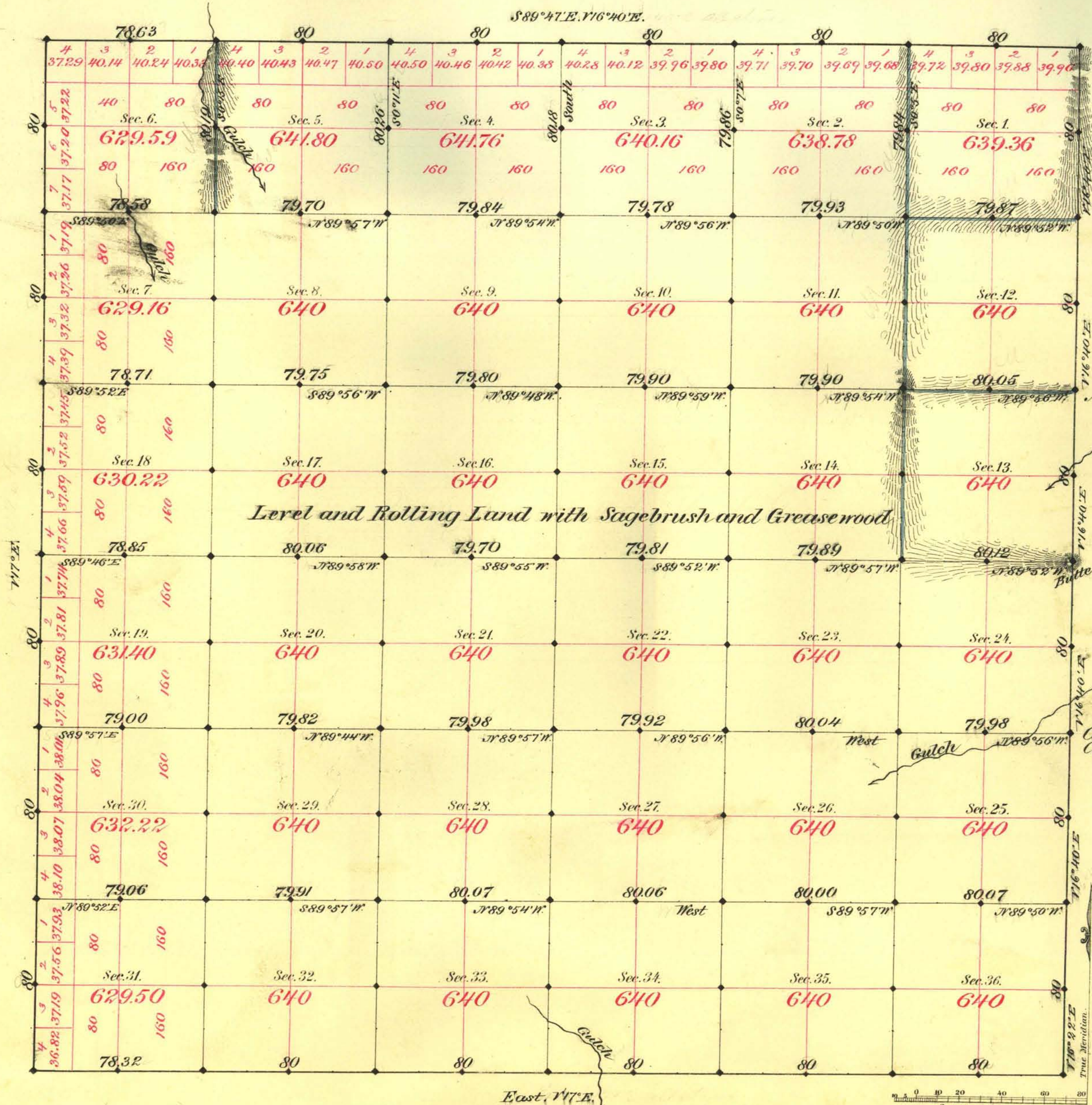


TOWNSHIP N^o 3 NORTH RANGE N^o 44 EAST MOUNT DIABLO MERIDIAN



Aggregate Area of Public Land surr^d 22983.95 Acres.

Level and Rolling Land with Sagebrush and Greasewood

Commenced July 21st 1881
Completed July 27th

Subdivisions run with a variation of 16'40" East.

Survey Designated	By Whom Surveyed	Date of Contract	Amount of Survey	When Surveyed
Township lines	Glover & Perrin	April 15 th 1881	23 ⁷⁶ 76 ⁹⁵ 12 ¹²	1881
Subd ^{ns} black #8	"	"	63 72 53	July "
blue #10	"	"	5 79 95	" "

79⁹ Conl.
192

The above Map of Township N^o 3 North of Range N^o 44 East of Mount Diablo Meridian is strictly conformable to the field notes of the survey thereof on file in this Office, which have been examined and approved.
Surveyor General's Office, }
Virginia City Nevada }
September 20th 1881 }
W. S. Davis }
Sur. Gen. Nev.