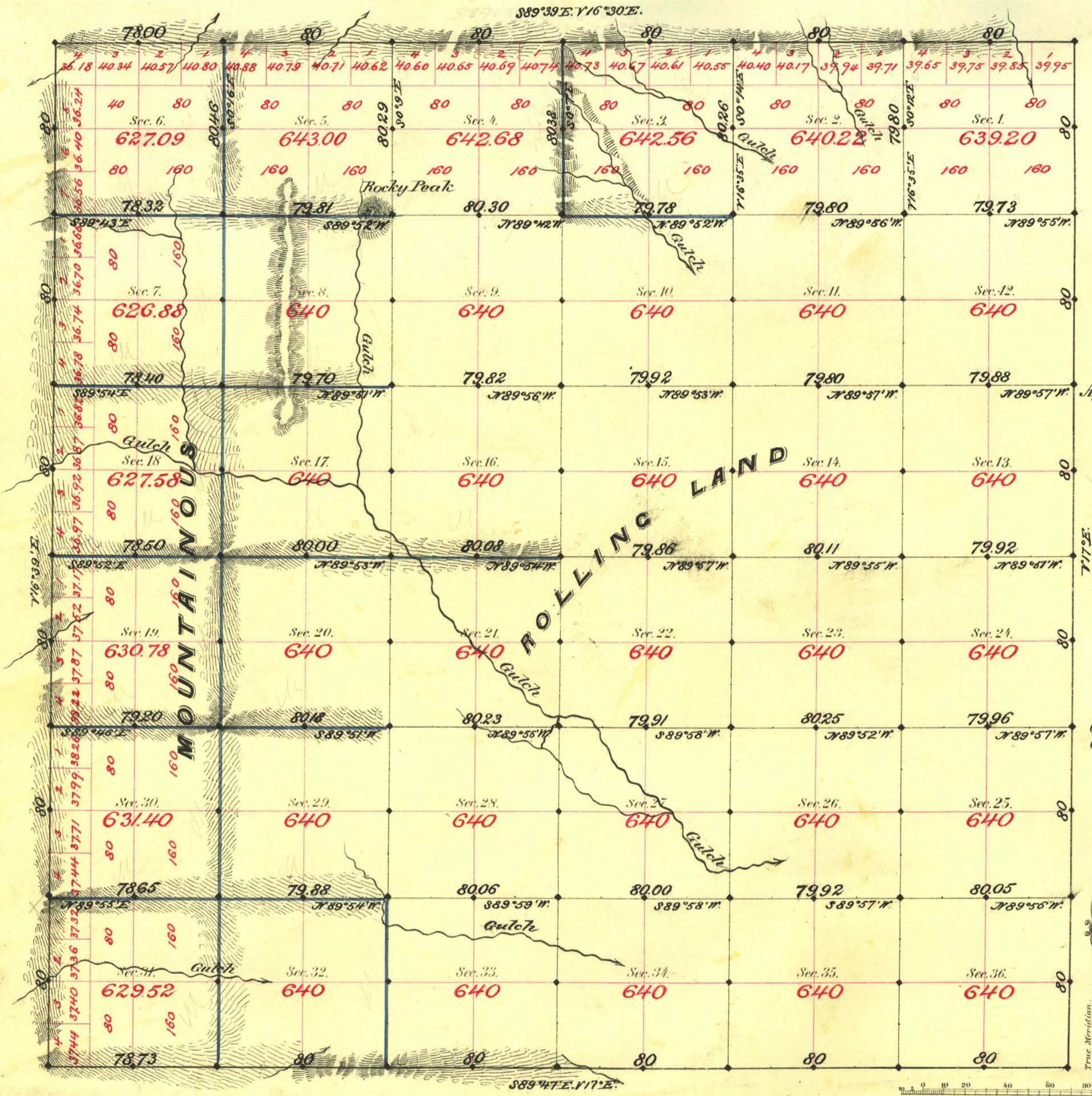


TOWNSHIP N^o 3 NORTH RANGE N^o 43 EAST MOUNT DIABLO MERIDIAN



Aggregate Area of Public Land surveyed $\frac{7}{8}$ 22980.91 Acres.

Commenced July 15th 1881.
Completed " 23rd "

Subd^{ns} not noted run Variation 17° East.

Surveys Designated	By Whom Surveyed	Date of Contract	Amount of Surveys	When Surveyed
W. Bdy.	Glover & Perrin	Jan. 16 th 1881	6 ⁰⁰ - 00 ⁰⁰ 1 ^{1/2}	1881
N. E. & S. Bdy.	"	April 15 th "	17 - 76 - 73	"
Subd ^{ns} black #8	"	" " "	39 - 79 - 87	July "
" blue #10	"	" " "	19 - 73 - 34	" "

Cor.
118-110
122

The above Map of Township N^o 3 North of Range N^o 43 East of Mount Diablo Meridian is strictly conformable to the field notes of the survey thereof on file in this Office, which have been examined and approved.

Surveyor General's Office,
Virginia City, Nevada

C. L. Perrin
Sur. Gen. Nev.

September 30th 1881