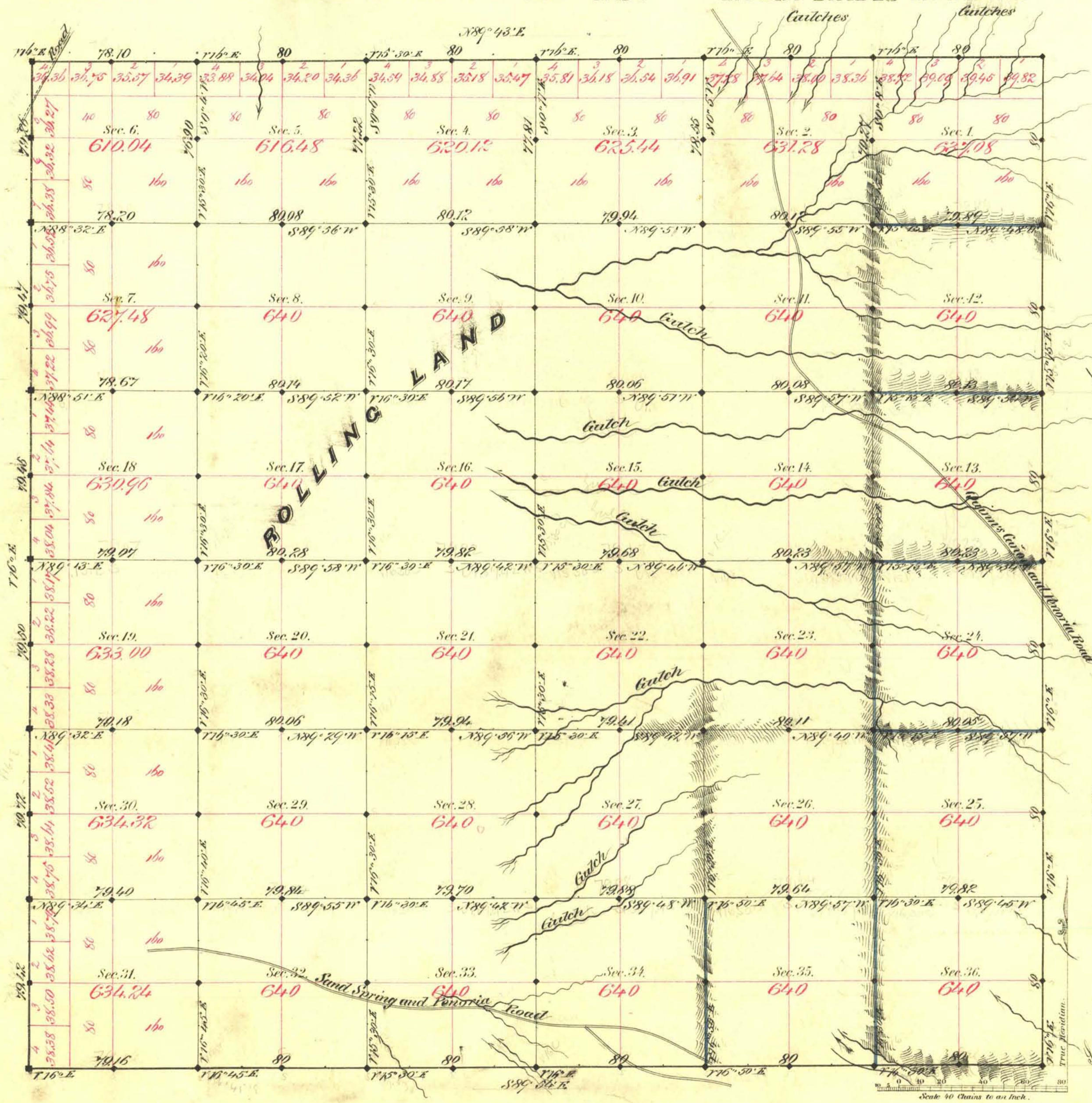


TOWNSHIP N^o 2 SOUTH RANGE N^o 56 EAST MOUNT DIABLO MERIDIAN



Aggregate Area of Public Land Damaged 22,900 1/4 Acs

Commenced April 27th 1881
Completed May 3rd "

But divisions not otherwise noted run with a variation of 16 East.

Surveys Designated	By Whom Surveyed	Date of Contract	Amount of Surveys	When Surveyed
W. 1/4	Monroe	Oct 15 1869	26 - 25 - 155	1869
" " Subdivided	Reidy & Magee	Feb. 23 1881	23 - 74 - 08	1881
Subdivisions Black	" "	" " "	31 - 53 - 39	" "
" " Blue	" "	" " "	8 - 00 - 30	" "

19 31
117
"

The above Map of Township N^o 2 South of Range N^o 56 East Mt Diablo Meridian is strictly conformable to the field notes of the survey thereof on file in this Office, which have been examined and approved.
Surveyor General's Office, }
Virginia City Nev. }
July 12th 1881 }
C. J. Myers, Sur. Gen. Nev.