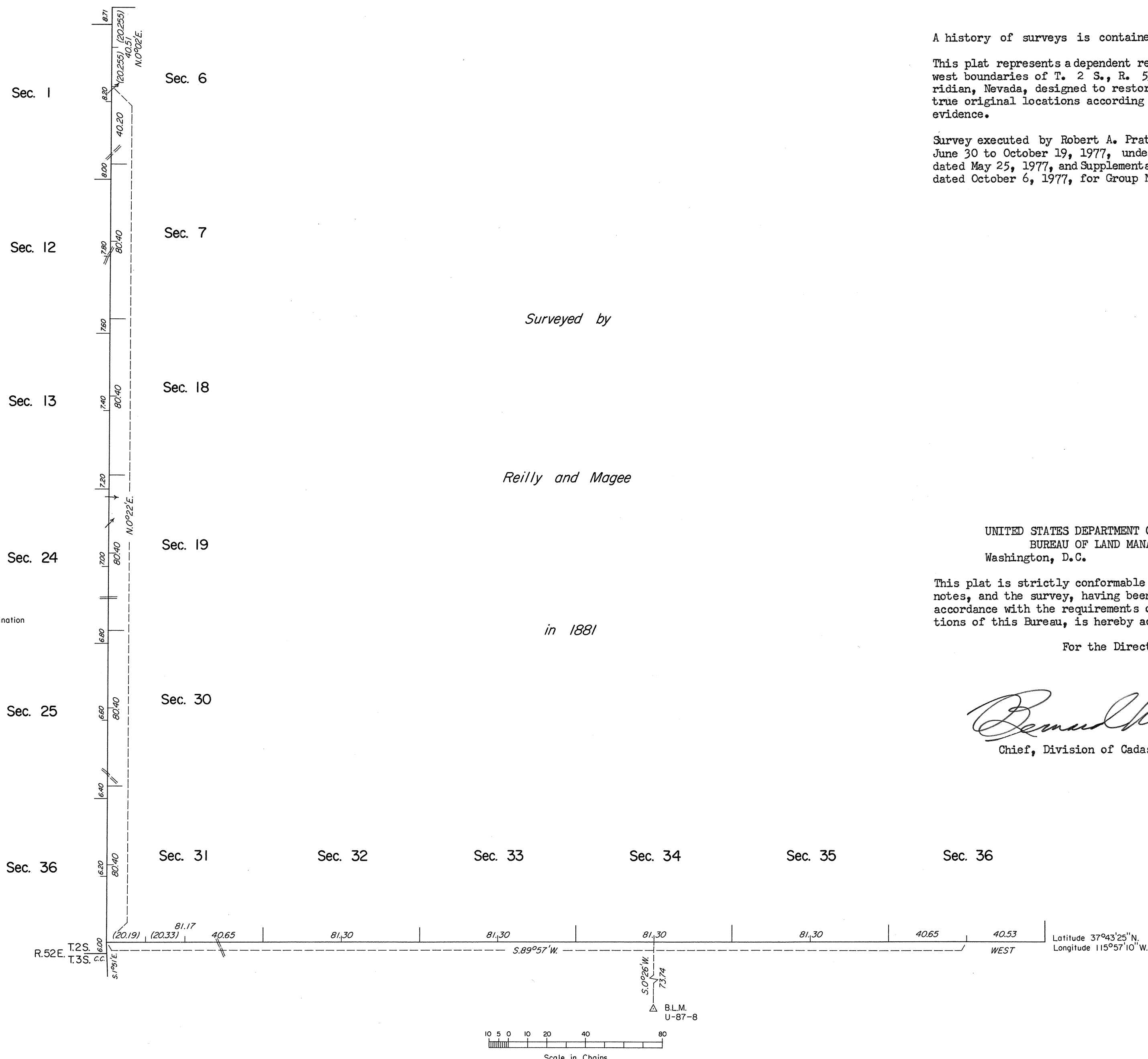


OFFICIALLY FILED
NEVADA STATE OFFICE
10:00 a.m., June 12, 1978

TOWNSHIP 2 SOUTH, RANGE 53 EAST, OF THE MOUNT DIABLO MERIDIAN, NEVADA

DEPENDENT RESURVEY



A history of surveys is contained in the field notes.

This plat represents a dependent resurvey of the south and west boundaries of T. 2 S., R. 53 E., Mount Diablo Meridian, Nevada, designed to restore the corners in their true original locations according to the best available evidence.

Survey executed by Robert A. Pratt, Cadastral Surveyor, June 30 to October 19, 1977, under Special Instructions dated May 25, 1977, and Supplemental Special Instructions dated October 6, 1977, for Group No. 548, Nevada.

Surveyed by

Reilly and Magee

in 1881

UNITED STATES DEPARTMENT OF THE INTERIOR
BUREAU OF LAND MANAGEMENT
Washington, D.C. May 17, 1978

This plat is strictly conformable to the approved field notes, and the survey, having been correctly executed in accordance with the requirements of law and the regulations of this Bureau, is hereby accepted.

For the Director

Donald W. Hooper
Chief, Division of Cadastral Survey