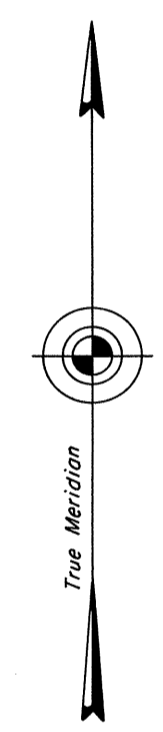
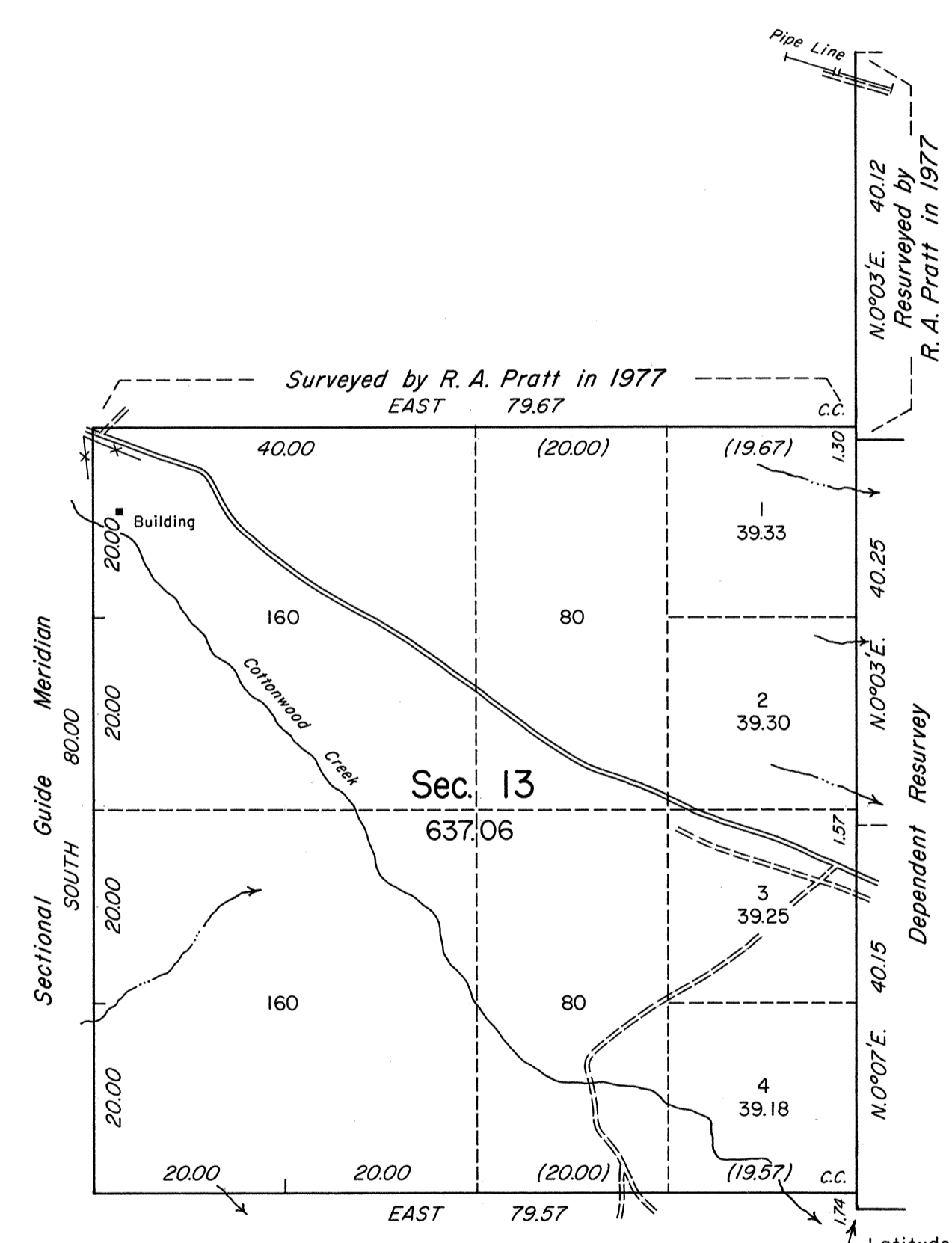


ORIGINAL

TOWNSHIP 2 NORTH, RANGE 56 EAST, OF THE MOUNT DIABLO MERIDIAN, NEVADA



Mean Magnetic Declination  
 16 1/2° E.



Sec. 7

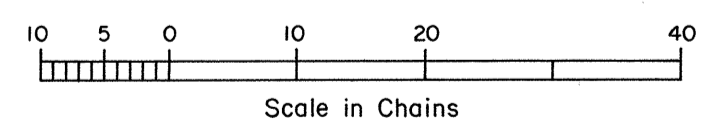
Sec. 18

History of the earlier surveys is contained in the field notes.

This plat represents a dependent resurvey of a portion of the west boundary of T. 2 N., R. 57 E., designed to restore the corners in their true original locations according to the best available evidence; and the survey of a portion of the subdivisional lines of T. 2 N., R. 56 E., Mount Diablo Meridian, Nevada.

Survey executed by James A. Mack, Cadastral Surveyor, beginning March 25, 1986 and completed March 26, 1986, under Special Instructions dated March 18, 1986, for Group No. 632, Nevada.

Latitude 38° 01' 42.3" N.  
 Longitude 115° 37' 18.7" W.



Scale in Chains  
 Area Surveyed 637.06 Acres

UNITED STATES DEPARTMENT OF THE INTERIOR  
 BUREAU OF LAND MANAGEMENT

Reno, Nevada May 2, 1986

This plat is strictly conformable to the approved field notes, and the survey, having been correctly executed in accordance with the requirements of law and the regulations of this Bureau, is hereby accepted.

For the Director

*Laurel E. Bland*

Chief Cadastral Surveyor